

Anti-Phospho-Phospholipase A2 (Ser505) Rabbit mAb

Purified Recombinant Rabbit Monoclonal Antibody

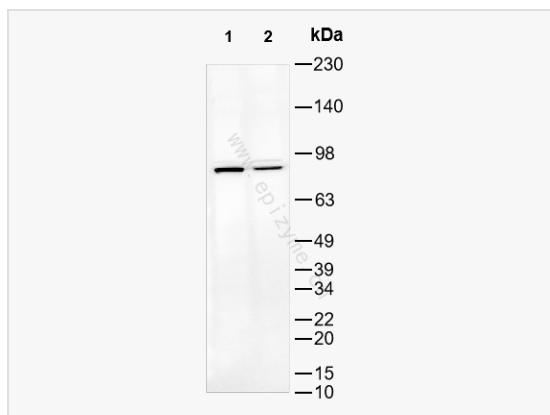
Catalog # R016053

Product Information

Application	WB, ELISA
Reactivity	Human, Mouse
Dilution	WB 1:1,000~1:2,000
Host	Rabbit
Clonality	Monoclonal
Clone No.	57E02B45
Isotype	IgG
Label	Unconjugated
Immunogen	A synthetic phosphopeptide corresponding to residues surrounding Ser505 of human Phospholipase A2
Format	Affinity purified monoclonal antibody supplied in PBS with 0.02% sodium azide and 50% glycerol, pH 7.3.
Storage	Shipped on wet ice. Store at -20°C. Stable for 24 months from date of receipt. Aliquoting is unnecessary for -20°C storage.
Precautions	Anti-Phospho-Phospholipase A2 (Ser505) Rabbit mAb [57E02B45] is for research use only and not for use in diagnostic or therapeutic procedures.

Protein Information

Synonyms	CPLA2(phospho-Ser505); CPLA2(phospho-S505); p-CPLA2 (Ser505); p-CPLA2 (S505); Calcium dependent phospholipid binding protein; CPLA 2; cPLA2 alpha; cPLA2; Cytosolic phospholipase A2; Cytosolic phospholipase A2 group IVA; Lysophospholipase; MGC126350; PA24A_HUMAN; Phosphatidylcholine 2 acylhydrolase; Phosphatidylcholine 2-acylhydrolase; Phospholipase A2 group 4 A; Phospholipase A2 group IVA (cytosolic calcium dependent); Phospholipase A2 group IVA; PhospholipaseA2; PLA2G4.
Calculated MW	Calculated MW: 85 kDa; Observed MW: 85 kDa
Uniprot ID	P47712
Gene ID	5321
Background	This gene encodes a member of the cytosolic phospholipase A2 group IV family. The enzyme catalyzes the hydrolysis of membrane phospholipids to release arachidonic acid which is subsequently metabolized into eicosanoids. Eicosanoids, including prostaglandins and leukotrienes, are lipid-based cellular hormones that regulate hemodynamics, inflammatory responses, and other intracellular pathways. The hydrolysis reaction also produces lysophospholipids that are converted into platelet-activating factor. The enzyme is activated by increased intracellular Ca(2+) levels and phosphorylation, resulting in its translocation from the cytosol and nucleus to perinuclear membrane vesicles. Alternative splicing results in multiple transcript variants. [provided by RefSeq, Jul 2015]
Cellular Location	Cytoplasm Golgi apparatus membrane Nucleus envelope Translocates to intracellular membranes in a calcium-dependent way.



Western Blot - Anti-Phospho-Phospholipase A2 (Ser505) Rabbit mAb [57E02B45]

All lanes: R016053 at 1:1,000 dilution

Lane 1: THP-1 (Human monocytic leukemia cell) whole cell lysates

Lane 2: Raw264.7 (Mouse mononuclear macrophage leukemia cell) whole cell lysates

Lysates/proteins at 10 μ g per lane.

Secondary antibody: Goat Anti-Rabbit IgG (H+L), HRP Conjugated (Cat. No. LF102) at 1:5,000 dilution

Predicted band size: 85 kDa

Observed band size: 85 kDa

Developed using the ECL technique (Cat. No. SQ201).