

Anti-Phospho-c-Myc (Thr58) Rabbit mAb

Purified Recombinant Rabbit Monoclonal Antibody

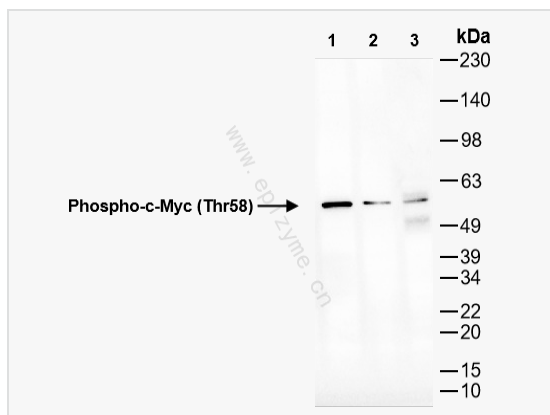
Catalog # R016052

Product Information

| | |
|-------------|--|
| Application | WB, ELISA |
| Reactivity | Human, Mouse, Rat |
| Dilution | WB 1:1,000~1:2,000 |
| Host | Rabbit |
| Clonality | Monoclonal |
| Clone No. | 82M84E37 |
| Isotype | IgG |
| Label | Unconjugated |
| Immunogen | A synthetic phosphopeptide corresponding to residues surrounding Thr58 of human c-Myc |
| Format | Affinity purified monoclonal antibody supplied in PBS with 0.02% sodium azide and 50% glycerol, pH 7.3. |
| Storage | Shipped on wet ice. Store at -20°C. Stable for 24 months from date of receipt. Aliquoting is unnecessary for -20°C storage. |
| Precautions | Anti-Phospho-c-Myc (Thr58) Rabbit mAb [82M84E37] is for research use only and not for use in diagnostic or therapeutic procedures. |

Protein Information

| | |
|-------------------|---|
| Synonyms | MYC c-Myc (p-T58); p-c-Myc; phospho-c-Myc; MRTL; MYCC; bHLHe39; c-Myc; Myc2; Niard; Nird; RNCMYC; mMyc; MYC_HUMAN; MYC; Class E basic helix-loop-helix protein 39 (bHLHe39); Proto-oncogene c-Myc; Transcription factor p64; MYC_MOUSE; MYC_RAT. |
| Calculated MW | Calculated MW: 51 kDa; Observed MW: 57 kDa |
| Uniprot ID | P01106 |
| Gene ID | 4609 |
| Background | This gene is a proto-oncogene and encodes a nuclear phosphoprotein that plays a role in cell cycle progression, apoptosis and cellular transformation. The encoded protein forms a heterodimer with the related transcription factor MAX. This complex binds to the E box DNA consensus sequence and regulates the transcription of specific target genes. Amplification of this gene is frequently observed in numerous human cancers. Translocations involving this gene are associated with Burkitt lymphoma and multiple myeloma in human patients. There is evidence to show that translation initiates both from an upstream, in-frame non-AUG (CUG) and a downstream AUG start site, resulting in the production of two isoforms with distinct N-termini. [provided by RefSeq, Aug 2017] |
| Cellular Location | Nucleus Nucleoplasm Nucleus Nucleolus Nucleus Cytoplasm Localization to the nucleolus is dependent on HEATR1. |



Western Blot - Anti-Phospho-c-Myc (Thr58) Rabbit mAb [82M84E37]

All lanes: R016052 at 1:1,000 dilution

Lane 1: THP-1 (Human monocytic leukemia cell) whole cell lysates

Lane 2: PC-12 (Rat adrenal pheochromocytoma epithelial cell) whole cell lysates

Lane 3: Raw264.7 (Mouse mononuclear macrophage leukemia cell) whole cell lysates

Lysates/proteins at 10 μ g per lane.

Secondary antibody: Goat Anti-Rabbit IgG (H+L), HRP Conjugated (Cat. No. LF102) at 1:5,000 dilution

Predicted band size: 51 kDa

Observed band size: 57 kDa

Developed using the ECL technique (Cat. No. SQ201).