

Anti-Phospho-Dishevelled 2 (Thr224) Rabbit mAb

Purified Recombinant Rabbit Monoclonal Antibody

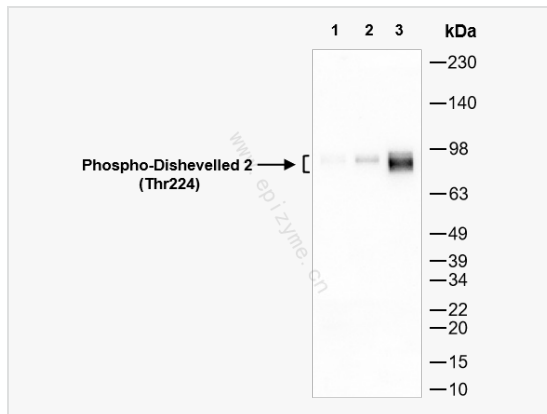
Catalog # R016050

Product Information

Application	WB, ELISA
Reactivity	Human, Mouse, Rat
Dilution	WB 1:1,000~1:3,000
Host	Rabbit
Clonality	Monoclonal
Clone No.	70B07F41
Isotype	IgG
Label	Unconjugated
Immunogen	A synthetic phosphopeptide corresponding to residues surrounding Thr224 of human Dishevelled 2
Format	Affinity purified monoclonal antibody supplied in PBS with 0.02% sodium azide and 50% glycerol, pH 7.3.
Storage	Shipped on wet ice. Store at -20°C. Stable for 24 months from date of receipt. Aliquoting is unnecessary for -20°C storage.
Precautions	Anti-Phospho-Dishevelled 2 (Thr224) Rabbit mAb [70B07F41] is for research use only and not for use in diagnostic or therapeutic procedures.

Protein Information

Synonyms	DVL2 Dishevelled 2 (p-T224); p-Dishevelled 2; phospho-Dishevelled 2; Dvl-2; DVL2_HUMAN; DVL2; Dishevelled-2; DSH homolog 2; DVL2_MOUSE.
Calculated MW	Calculated MW: 79 kDa; Observed MW: 90-95 kDa
Uniprot ID	O14641
Gene ID	1856
Background	This gene encodes a member of the dishevelled (dsh) protein family. The vertebrate dsh proteins have approximately 40% amino acid sequence similarity with Drosophila dsh. This gene encodes a 90-kD protein that undergoes posttranslational phosphorylation to form a 95-kD cytoplasmic protein, which may play a role in the signal transduction pathway mediated by multiple Wnt proteins. The mechanisms of dishevelled function in Wnt signaling are likely to be conserved among metazoans. [provided by RefSeq, Jul 2008]
Cellular Location	Cell membrane Peripheral membrane protein Cytoplasmic side Cytoplasm Cytosol Cytoplasmic vesicle Nucleus Localizes at the cell membrane upon interaction with frizzled family members and promotes their internalization. Localizes to cytoplasmic puncta (By similarity). Interaction with FOXK1 and FOXK2 induces nuclear translocation (PubMed:25805136).



Western Blot - Anti-Phospho-Dishevelled 2 (Thr224) Rabbit mAb [70B07F41]

All lanes: R016050 at 1:3,000 dilution

Lane 1: THP-1 (Human monocytic leukemia cell) whole cell lysates

Lane 2: PC-12 (Rat adrenal pheochromocytoma epithelial cell) whole cell lysates

Lane 3: Raw264.7 (Mouse mononuclear macrophage leukemia cell) whole cell lysates

Lysates/proteins at 10 μ g per lane.

Secondary antibody: Goat Anti-Rabbit IgG (H+L), HRP Conjugated (Cat. No. LF102) at 1:5,000 dilution

Predicted band size: 79 kDa

Observed band size: 90-95 kDa

Developed using the ECL technique (Cat. No. SQ201).