

Anti-IL-10 Rabbit mAb

Purified Recombinant Rabbit Monoclonal Antibody

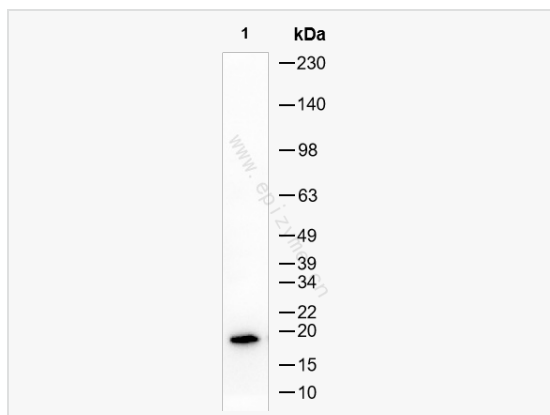
Catalog # R016049

Product Information

Application	WB, ELISA
Reactivity	Human
Dilution	WB 1:1,000~1:2,000
Host	Rabbit
Clonality	Monoclonal
Clone No.	43B83S68
Isotype	IgG
Label	Unconjugated
Immunogen	A synthesized peptide derived from human IL10
Format	Affinity purified monoclonal antibody supplied in PBS with 0.02% sodium azide and 50% glycerol, pH 7.3.
Storage	Shipped on wet ice. Store at -20°C. Stable for 24 months from date of receipt. Aliquoting is unnecessary for -20°C storage.
Precautions	Anti-IL-10 Rabbit mAb [43B83S68] is for research use only and not for use in diagnostic or therapeutic procedures.

Protein Information

Synonyms	CSIF; GVHDS; IL-10; IL10A; TGIF; If2a; IL10X; IL10_HUMAN; IL10; Cytokine synthesis inhibitory factor (CSIF); IL10_MOUSE; IL10_RAT.
Calculated MW	Calculated MW: 21 kDa; Observed MW: 18 kDa
Uniprot ID	P22301
Gene ID	3586
Background	The protein encoded by this gene is a cytokine produced primarily by monocytes and to a lesser extent by lymphocytes. This cytokine has pleiotropic effects in immunoregulation and inflammation. It down-regulates the expression of Th1 cytokines, MHC class II Ags, and costimulatory molecules on macrophages. It also enhances B cell survival, proliferation, and antibody production. This cytokine can block NF-kappa B activity, and is involved in the regulation of the JAK-STAT signaling pathway. Knockout studies in mice suggested the function of this cytokine as an essential immunoregulator in the intestinal tract. Mutations in this gene are associated with an increased susceptibility to HIV-1 infection and rheumatoid arthritis.[provided by RefSeq, May 2011]
Cellular Location	Secreted
Tissue Location	Produced by a variety of cell lines, including T-cells, macrophages, mast cells and other cell types.



Western Blot - Anti-IL-10 Rabbit mAb [43B83S68]

All lanes: R016049 at 1:1,000 dilution

Lane 1: THP-1 (Human monocytic leukemia cell) whole cell lysates

Lysates/proteins at 10 μ g per lane.

Secondary antibody: Goat Anti-Rabbit IgG (H+L), HRP Conjugated (Cat. No. LF102) at 1:5,000 dilution

Predicted band size: 21 kDa

Observed band size: 18 kDa

Developed using the ECL technique (Cat. No. SQ201).