

Anti-Delta-sarcoglycan/SGCD Rabbit mAb

Purified Recombinant Rabbit Monoclonal Antibody

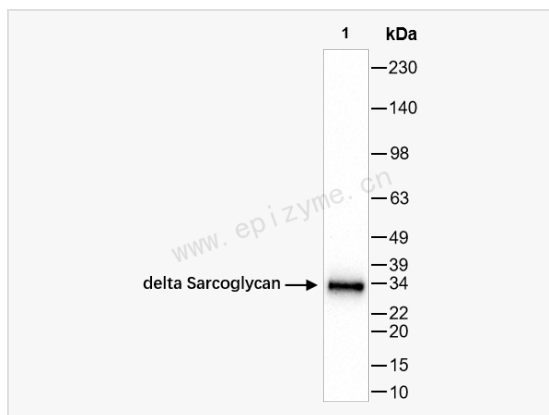
Catalog # R016031

Product Information

Application	WB, IHC-P/IF (Tissue-P), ELISA
Reactivity	Human
Dilution	WB 1:1,000~1:2,000; IHC-P 1:100~1:200; IF 1:100~1:200
Host	Rabbit
Clonality	Monoclonal
Clone No.	62I51Q05
Isotype	IgG
Label	Unconjugated
Immunogen	A synthesized peptide derived from human delta Sarcoglycan
Format	Affinity purified monoclonal antibody supplied in PBS with 0.02% sodium azide and 50% glycerol, pH 7.3.
Storage	Shipped on wet ice. Store at -20°C. Stable for 24 months from date of receipt. Aliquoting is unnecessary for -20°C storage.
Precautions	Anti-Delta-sarcoglycan/SGCD Rabbit mAb [62I51Q05] is for research use only and not for use in diagnostic or therapeutic procedures.

Protein Information

Synonyms	35 kDa dystrophin associated glycoprotein; 35 kDa dystrophin-associated glycoprotein; 35DAG; CMD1L; DAGD; delta-sarcoglycan; delta-SG; Dystrophin associated glycoprotein delta sarcoglycan; LGMD2F; MGC22567; Placental delta sarcoglycan; Sarcoglycan delta(35 kDa dystrophin associated glycoprotein); SG delta; SGCD; SGCD_HUMAN; SGCDP; SGD.
Calculated MW	Calculated MW: 32 kDa; Observed MW: 32 kDa
Uniprot ID	Q92629
Gene ID	6444
Background	The protein encoded by this gene is one of the four known components of the sarcoglycan complex, which is a subcomplex of the dystrophin-glycoprotein complex (DGC). DGC forms a link between the F-actin cytoskeleton and the extracellular matrix. This protein is expressed most abundantly in skeletal and cardiac muscle. Mutations in this gene have been associated with autosomal recessive limb-girdle muscular dystrophy and dilated cardiomyopathy. Alternatively spliced transcript variants encoding distinct isoforms have been observed for this gene. [provided by RefSeq, Jul 2008]
Cellular Location	Cell membrane Sarcolemma Single-pass type II membrane protein Cytoplasm Cytoskeleton
Tissue Location	Most strongly expressed in skeletal and cardiac muscle. Also detected in smooth muscle. Weak expression in brain and lung.



Western Blot - Anti-Delta-sarcoglycan/SGCD Rabbit mAb [62I51Q05]

All lanes: R016031 at 1:1,000 dilution

Lane 1: U87 (Human malignant glioblastoma epithelial cells) whole cell lysates

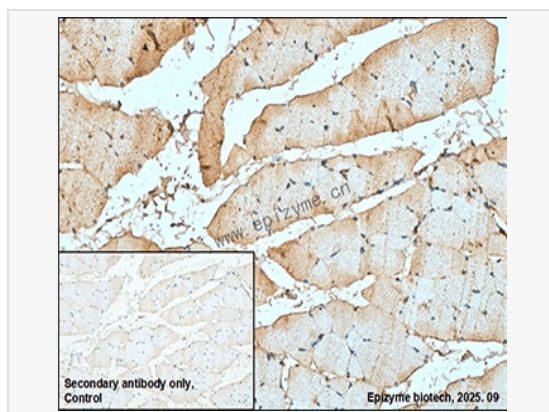
Lysates/proteins at 10 µg per lane.

Secondary antibody: Goat Anti-Rabbit IgG (H+L), HRP Conjugated (Cat. No. LF102) at 1:5,000 dilution

Predicted band size: 32 kDa

Observed band size: 32 kDa

Developed using the ECL technique (Cat. No. SQ201).



Immunohistochemistry - Anti-Delta-sarcoglycan/SGCD Rabbit mAb [62I51Q05]

Sample: Paraformaldehyde-fixed, paraffin embedded rat muscle tissue

Heat mediated antigen retrieval with Tris-EDTA buffer (pH 9.0) for 30 mins.

Primary antibody: R016031 at 1:200 dilution

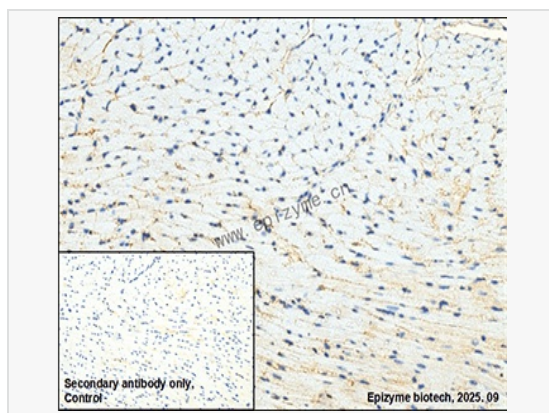
Secondary antibody: Goat Anti-Rabbit IgG (H+L), HRP conjugated at 1:1,000 dilution

DAB was used as the chromogen.

Counter stained with hematoxylin.

Positive/negative staining were presented.

Only the secondary antibody was used as the negative control.



Immunohistochemistry - Anti-Delta-sarcoglycan/SGCD Rabbit mAb [62I51Q05]

Sample: Paraformaldehyde-fixed, paraffin embedded mouse heart tissue

Heat mediated antigen retrieval with Tris-EDTA buffer (pH 9.0) for 30 mins.

Primary antibody: R016031 at 1:200 dilution

Secondary antibody: Goat Anti-Rabbit IgG (H+L), HRP conjugated at 1:1,000 dilution

DAB was used as the chromogen.

Counter stained with hematoxylin.

Positive/negative staining were presented.

Only the secondary antibody was used as the negative control.