

## Anti-AP2S1 Rabbit mAb

Purified Recombinant Rabbit Monoclonal Antibody

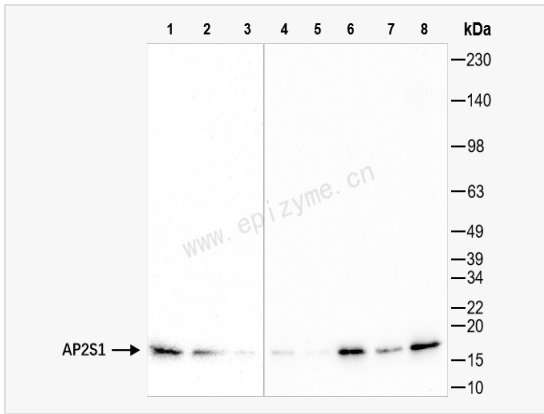
Catalog # R015991

### Product Information

Application	WB, IHC-P/IF (Tissue-P), ELISA
Reactivity	Human, Mouse, Rat
Dilution	WB 1:1,000~1:2,000; IHC-P 1:100~1:200; IF 1:100~1:200
Host	Rabbit
Clonality	Monoclonal
Clone No.	29E15M06
Isotype	IgG
Label	Unconjugated
Immunogen	A synthesized peptide derived from human AP2S1
Format	Affinity purified monoclonal antibody supplied in PBS with 0.02% sodium azide and 50% glycerol, pH 7.3.
Storage	Shipped on wet ice. Store at -20°C. Stable for 24 months from date of receipt. Aliquoting is unnecessary for -20°C storage.
Precautions	Anti-AP2S1 Rabbit mAb [29E15M06] is for research use only and not for use in diagnostic or therapeutic procedures.

### Protein Information

Synonyms	AP17; Ap2s1; CLAPS2; Sigma adaptin 3b; Sigma2 adaptin.
Calculated MW	Calculated MW: 17 kDa; Observed MW: 17 kDa
Uniprot ID	P53680
Gene ID	1175
Background	One of two major clathrin-associated adaptor complexes, AP-2, is a heterotetramer which is associated with the plasma membrane. This complex is composed of two large chains, a medium chain, and a small chain. This gene encodes the small chain of this complex. Alternative splicing results in multiple transcript variants. [provided by RefSeq, Jul 2014]
Cellular Location	Cell membrane Membrane Coated pit Peripheral membrane protein Cytoplasmic side AP-2 appears to be excluded from internalizing CCVs and to disengage from sites of endocytosis seconds before internalization of the nascent CCV



Western Blot - Anti-AP2S1 Rabbit mAb [29E15M06]

All lanes: R015991 at 1:1,000 dilution

Lane 1: HeLa (Human cervix adenocarcinoma epithelial cell) whole cell lysates

Lane 2: HepG2 (Human hepatocarcinoma epithelial cell) whole cell lysates

Lane 3: HCT116 (Human colorectal carcinoma epithelial cell) whole cell lysates

Lane 4: U87 (Human malignant glioblastoma epithelial cells) whole cell lysates

Lane 5: C2C12 (Mouse myoblasts epithelial cell) whole cell lysates

Lane 6: Mouse brain whole tissue lysates

Lane 7: PC-12 (Rat adrenal pheochromocytoma epithelial cell) whole cell lysates

Lane 8: Rat brain whole tissue lysates

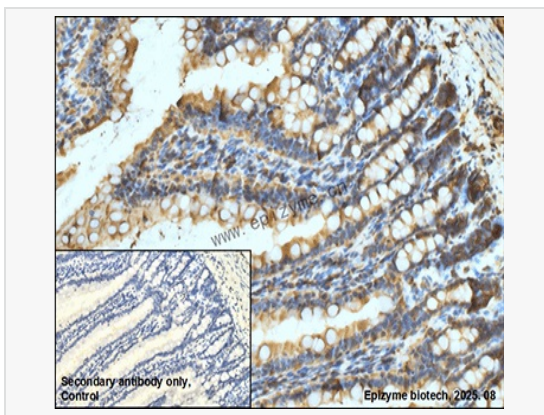
Lysates/proteins at 10 µg per lane.

Secondary antibody: Goat Anti-Rabbit IgG (H+L), HRP Conjugated (Cat. No. LF102) at 1:5,000 dilution

Predicted band size: 17 kDa

Observed band size: 17 kDa

Developed using the ECL technique (Cat. No. SQ201).



Immunohistochemistry - Anti-AP2S1 Rabbit mAb [29E15M06]

Sample: Paraformaldehyde-fixed, paraffin embedded rat colon tissue

Heat mediated antigen retrieval with Tris-EDTA buffer (pH 9.0) for 30 mins.

Primary antibody: R015991 at 1:200 dilution

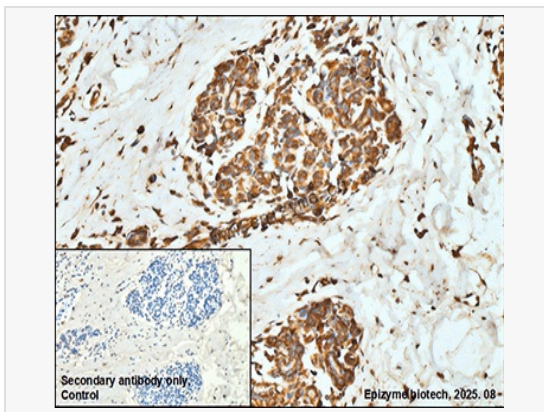
Secondary antibody: Goat Anti-Rabbit IgG (H+L), HRP conjugated at 1:1,000 dilution

DAB was used as the chromogen.

Counter stained with hematoxylin.

Positive/negative staining were presented.

Only the secondary antibody was used as the negative control.



Immunohistochemistry - Anti-AP2S1 Rabbit mAb [29E15M06]

Sample: Paraformaldehyde-fixed, paraffin embedded human breast cancer tissue

Heat mediated antigen retrieval with Tris-EDTA buffer (pH 9.0) for 30 mins.

Primary antibody: R015991 at 1:200 dilution

Secondary antibody: Goat Anti-Rabbit IgG (H+L), HRP conjugated at 1:1,000 dilution

DAB was used as the chromogen.

Counter stained with hematoxylin.

Positive/negative staining were presented.

Only the secondary antibody was used as the negative control.