

Anti-MYL9 Rabbit mAb

Purified Recombinant Rabbit Monoclonal Antibody

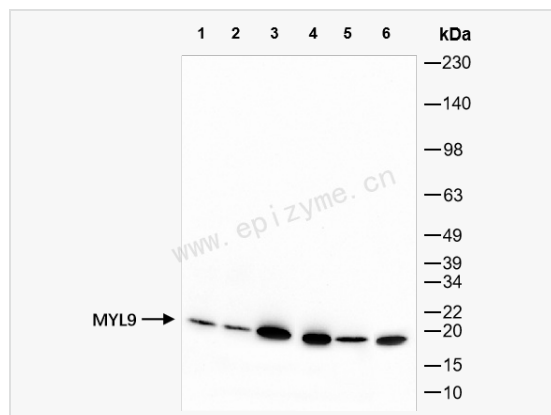
Catalog # R015975

Product Information

Application	WB, IHC-P/IF (Tissue-P), ELISA
Reactivity	Human, Mouse
Dilution	WB 1:1,000~1:2,000; IHC-P 1:100~1:200; IF 1:100~1:200
Host	Rabbit
Clonality	Monoclonal
Clone No.	60N49Q31
Isotype	IgG
Label	Unconjugated
Immunogen	A synthesized peptide derived from human MYL9
Format	Affinity purified monoclonal antibody supplied in PBS with 0.02% sodium azide and 50% glycerol, pH 7.3.
Storage	Shipped on wet ice. Store at -20°C. Stable for 24 months from date of receipt. Aliquoting is unnecessary for -20°C storage.
Precautions	Anti-MYL9 Rabbit mAb [60N49Q31] is for research use only and not for use in diagnostic or therapeutic procedures.

Protein Information

Synonyms	MLC2; MRLC1; MYRL2; MYL9; Myosin regulatory light polypeptide 9; 20 kDa myosin light chain; MLC-2C; Myosin RLC; Myosin regulatory light chain 9; Myosin regulatory light chain MRLC1; LC20.
Calculated MW	Calculated MW: 20 kDa; Observed MW: 18 kDa
Uniprot ID	P24844
Gene ID	10398
Background	Myosin, a structural component of muscle, consists of two heavy chains and four light chains. The protein encoded by this gene is a myosin light chain that may regulate muscle contraction by modulating the ATPase activity of myosin heads. The encoded protein binds calcium and is activated by myosin light chain kinase. Two transcript variants encoding different isoforms have been found for this gene. [provided by RefSeq, Jul 2008]
Cellular Location	Cytoplasm Cytoskeleton Cytoplasm Cell cortex Colocalizes with F-actin, MYH9 and PIEZO1 at the actomyosin cortex in myoblasts
Tissue Location	Smooth muscle tissues and in some, but not all, nonmuscle cells.



Western Blot - Anti-MYL9 Rabbit mAb [60N49Q31]

All lanes: R015975 at 1:1,000 dilution

Lane 1: HeLa (Human cervix adenocarcinoma epithelial cell) whole cell lysates

Lane 2: HepG2 (Human hepatocarcinoma epithelial cell) whole cell lysates

Lane 3: HCT116 (Human colorectal carcinoma epithelial cell) whole cell lysates

Lane 4: U87 (Human malignant glioblastoma epithelial cells) whole cell lysates

Lane 5: C2C12 (Mouse myoblasts epithelial cell) whole cell lysates

Lane 6: Mouse embryo-like whole tissue lysates

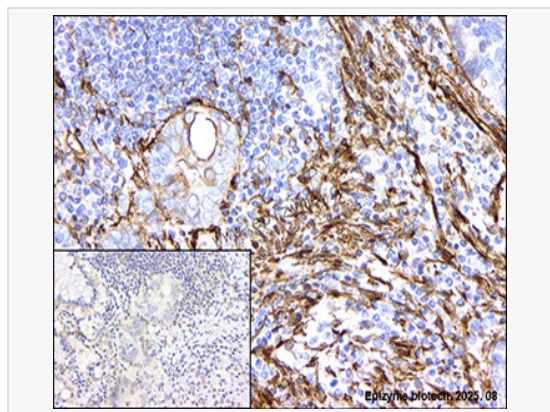
Lysates/proteins at 10 µg per lane.

Secondary antibody: Goat Anti-Rabbit IgG (H+L), HRP Conjugated (Cat. No. LF102) at 1:5,000 dilution

Predicted band size: 20 kDa

Observed band size: 18 kDa

Developed using the ECL technique (Cat. No. SQ201).



Immunohistochemistry - Anti-MYL9 Rabbit mAb [60N49Q31]

Sample: Paraformaldehyde-fixed, paraffin embedded human colonic cancer tissue

Heat mediated antigen retrieval with Tris-EDTA buffer (pH 9.0) for 30 mins.

Primary antibody: R015975 at 1:200 dilution

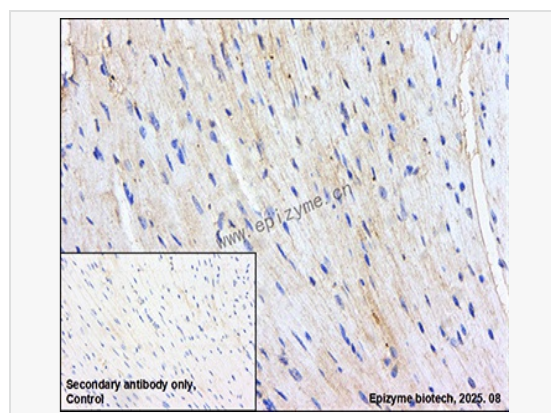
Secondary antibody: Goat Anti-Rabbit IgG (H+L), HRP conjugated at 1:1,000 dilution

DAB was used as the chromogen.

Counter stained with hematoxylin.

Positive/negative staining were presented.

Only the secondary antibody was used as the negative control.



Immunohistochemistry - Anti-MYL9 Rabbit mAb [60N49Q31]

Sample: Paraformaldehyde-fixed, paraffin embedded mouse heart tissue

Heat mediated antigen retrieval with Tris-EDTA buffer (pH 9.0) for 30 mins.

Primary antibody: R015975 at 1:200 dilution

Secondary antibody: Goat Anti-Rabbit IgG (H+L), HRP conjugated at 1:1,000 dilution

DAB was used as the chromogen.

Counter stained with hematoxylin.

Positive/negative staining were presented.

Only the secondary antibody was used as the negative control.