

# FITC Mouse Anti-Human CD127

Purified FITC-conjugated Recombinant Mouse Monoclonal Antibody

Catalog # F101205

## Product Information

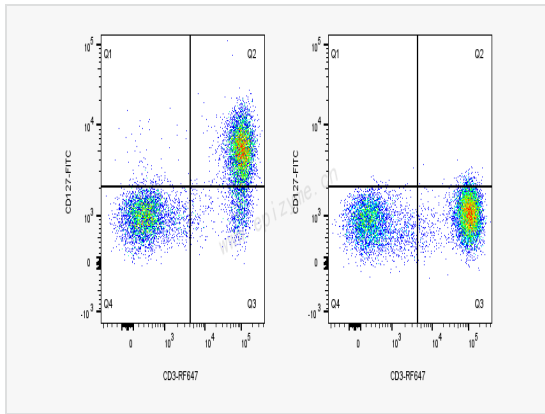
Application	FC
Recommended Usage	5 $\mu$ L per million cells in 100 $\mu$ L staining volume or 5 $\mu$ L per 100 $\mu$ L of whole blood.
Reactivity	Human
Host	Mouse
Clonality	Monoclonal
Clone No.	68C65P27
Isotype	IgG1, $\kappa$
Label	FITC (Ex/Em: 491/516 nm)
Immunogen	Recombinant protein of human CD127
Format	Phosphate-buffered solution, pH 7.2, containing 0.09% sodium azide and 0.2% (w/v) BSA.
Storage	Shipped on wet ice. Store undiluted between 2°C and 8°C and protected from prolonged exposure to light. Do not freeze.
Precautions	FITC Mouse Anti-Human CD127 [68C65P27] is for research use only and not for use in diagnostic or therapeutic procedures.

## Protein Information

Synonyms	CD 127, CD127, CD127 antigen, CDw127, IL 7R alpha, IL 7R, IL-7 receptor subunit alpha, IL-7R subunit alpha, IL-7R-alpha, IL-7RA, IL7R, IL7RA, IL7RA_HUMAN, IL7Ralpha, ILRA, Interleukin 7 receptor alpha chain, Interleukin 7 receptor, Interleukin 7 receptor isoform H5 6, Interleukin-7 receptor subunit alpha.
Uniprot ID	P16871
Gene ID	3575
Background	CD127 is a 60-90 kD type I transmembrane glycoprotein also known as IL-7 receptor $\alpha$ chain or IL-7R $\alpha$ . It forms a heterodimer with the common $\gamma$ chain ( $\gamma$ c or CD132) which is shared with the receptors for IL-2, IL-4, IL-9, IL-13, IL-15, and IL-21. CD127 is expressed on immature B cells through early pre-B stage cells, thymocytes (except CD4/CD8 double positive thymocytes), peripheral T cells, and bone marrow stromal cells. CD127 has been reported to be a useful marker for identifying memory and effector T cells. Studies have shown that CD127 expression is down-modulated on Treg cells. It can be used as a marker for differentiation of Treg and conventional T cells. The ligation of IL-7 with its receptor is important for stimulation of mature and immature T cells as well as immature B cell proliferation and development.
Cellular Location	Secreted and Cell membrane.

## Validation Images

---



Typical flow-cytometry plots of human peripheral-blood lymphocytes stained with both Anti-CD127-FITC (F101205) and Anti-CD3-RF647 (F100116) (left) or with Anti-CD3-RF647 (F100116) alone as a control (right).