

Anti-CD40L Rabbit mAb

Purified Recombinant Rabbit Monoclonal Antibody

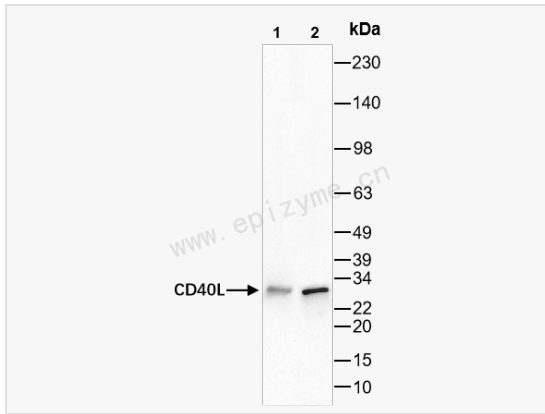
Catalog # R015907

Product Information

Application	WB, ELISA
Reactivity	Mouse, Rat
Dilution	WB 1:1,000~1:2,000
Host	Rabbit
Clonality	Monoclonal
Clone No.	89G32T91
Isotype	IgG
Label	Unconjugated
Immunogen	A synthesized peptide derived from human CD40L
Format	Affinity purified monoclonal antibody supplied in PBS with 0.02% sodium azide and 50% glycerol, pH 7.3.
Storage	Shipped on wet ice. Store at -20°C. Stable for 24 months from date of receipt. Aliquoting is unnecessary for -20°C storage.
Precautions	Anti-CD40L Rabbit mAb [89G32T91] is for research use only and not for use in diagnostic or therapeutic procedures.

Protein Information

Synonyms	CD154; CD40L; TNFSF5; TRAP; CD40LG; CD40 ligand; CD40-L; T-cell antigen Gp39; TNF-related activation protein; Tumor necrosis factor ligand superfamily member 5.
Calculated MW	Calculated MW: 29 kDa; Observed MW: 29 kDa
Uniprot ID	P29965
Gene ID	959
Background	The protein encoded by this gene is expressed on the surface of T cells. It regulates B cell function by engaging CD40 on the B cell surface. A defect in this gene results in an inability to undergo immunoglobulin class switch and is associated with hyper-IgM syndrome. [provided by RefSeq, Jul 2008]
Cellular Location	Cell membrane.Single-pass type II membrane protein.Cell surface.CD40 ligand, soluble form.Secretd.Release of soluble CD40L from platelets is partially regulated by GP IIb/IIIa, actin polymerization, and a matrix metalloproteinases (MMP) inhibitor-sensitive pathway.
Tissue Location	Specifically expressed on activated CD4+ T-lymphocytes.



Western Blot - Anti-CD40L Rabbit mAb [89G32T91]

All lanes: R015907 at 1:1,000 dilution

Lane 1: Mouse liver whole tissue lysates

Lane 2: Rat liver whole tissue lysates

Lysates/proteins at 10 μ g per lane.

Secondary antibody: Goat Anti-Rabbit IgG (H+L), HRP Conjugated (Cat. No. LF102) at 1:5,000 dilution

Predicted band size: 29 kDa

Observed band size: 29 kDa

Developed using the ECL technique (Cat. No. SQ201).