

# Anti-Phospho-BRAF (Ser728) Rabbit pAb

Purified Rabbit Polyclonal Antibody

Catalog # P108956

## Product Information

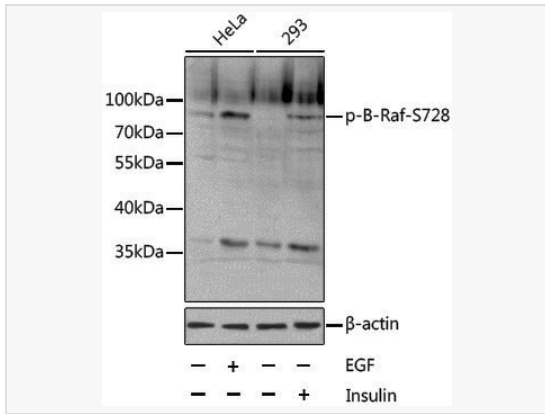
Application	WB, ELISA
Reactivity	Human
Dilution	WB 1:500~1:2,000
Host	Rabbit
Clonality	Polyclonal
Isotype	IgG
Label	Unconjugated
Immunogen	A synthetic phosphorylated peptide around S728 of human BRAF (NP_004324.2).
Format	Affinity purified polyclonal antibody supplied in PBS with 0.02% sodium azide and 50% glycerol, pH 7.3.
Storage	Shipped on wet ice. Store at -20°C. Stable for 24 months from date of receipt. Aliquoting is unnecessary for -20°C storage.
Precautions	Anti-Phospho-BRAF (Ser728) Rabbit pAb is for research use only and not for use in diagnostic or therapeutic procedures.

## Protein Information

Synonyms	NS7; B-raf; BRAF1; RAFB1; B-RAF1; BRAF-1; Phospho-B-Raf-S728.
Calculated MW	Calculated MW: 84 kDa; Observed MW: 86 kDa
Uniprot ID	P15056
Gene ID	673
Background	This gene encodes a protein belonging to the RAF family of serine/threonine protein kinases. This protein plays a role in regulating the MAP kinase/ERK signaling pathway, which affects cell division, differentiation, and secretion. Mutations in this gene, most commonly the V600E mutation, are the most frequently identified cancer-causing mutations in melanoma, and have been identified in various other cancers as well, including non-Hodgkin lymphoma, colorectal cancer, thyroid carcinoma, non-small cell lung carcinoma, hairy cell leukemia and adenocarcinoma of lung. Mutations in this gene are also associated with cardiofaciocutaneous, Noonan, and Costello syndromes, which exhibit overlapping phenotypes. A pseudogene of this gene has been identified on the X chromosome.

## Validation Images

---



Western blot analysis of various lysates using Phospho-B-Raf-S728 Rabbit pAb (P108956).

Secondary antibody: HRP-conjugated Goat anti-Rabbit IgG (H+L) (LF102) at 1:10,000 dilution.

Lysates/proteins: 25 $\mu$ g per lane.

Blocking buffer: 3% BSA.