

Anti-Phospho-Src (Ser17) Rabbit pAb

Purified Rabbit Polyclonal Antibody

Catalog # P108946

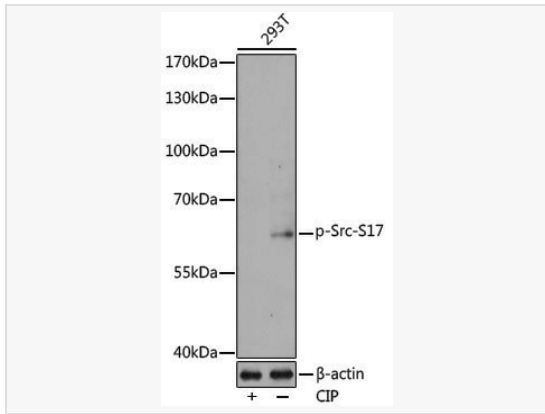
Product Information

| | |
|-------------|---|
| Application | WB, ELISA |
| Reactivity | Human, Mouse, Rat |
| Dilution | WB 1:500~1:1,000 |
| Host | Rabbit |
| Clonality | Polyclonal |
| Isotype | IgG |
| Label | Unconjugated |
| Immunogen | A synthetic phosphorylated peptide around S17 of human Phospho-Src-S17 (NP_005408.1). |
| Format | Affinity purified polyclonal antibody supplied in PBS with 0.02% sodium azide and 50% glycerol, pH 7.3. |
| Storage | Shipped on wet ice. Store at -20°C. Stable for 24 months from date of receipt. Aliquoting is unnecessary for -20°C storage. |
| Precautions | Anti-Phospho-Src (Ser17) Rabbit pAb is for research use only and not for use in diagnostic or therapeutic procedures. |

Protein Information

| | |
|---------------|--|
| Synonyms | ASV; SRC1; THC6; c-SRC; p60-Src; Phospho-Src-S17. |
| Calculated MW | Calculated MW: 60 kDa; Observed MW: 60 kDa |
| Uniprot ID | P12931 |
| Gene ID | 6714 |
| Background | This gene is highly similar to the v-src gene of Rous sarcoma virus. This proto-oncogene may play a role in the regulation of embryonic development and cell growth. The protein encoded by this gene is a tyrosine-protein kinase whose activity can be inhibited by phosphorylation by c-SRC kinase. Mutations in this gene could be involved in the malignant progression of colon cancer. Two transcript variants encoding the same protein have been found for this gene. |

Validation Images



Western blot analysis of lysates from 293T cells, using Phospho-Src-S17 Rabbit pAb (P108946) at 1:1,000 dilution. 293T cells were treated by CIP(20uL/400ul) at 37°C for 1 hour.

Secondary antibody: HRP-conjugated Goat anti-Rabbit IgG (H+L) (LF102) at 1:10,000 dilution.

Lysates/proteins: 25µg per lane.

Blocking buffer: 3% nonfat dry milk in TBST.

Detection: ECL Kit (SQ201).

Exposure time: 180s.