

## Anti-Phospho-PKC delta (Thr505) Rabbit pAb

Purified Rabbit Polyclonal Antibody

Catalog # P108757

### Product Information

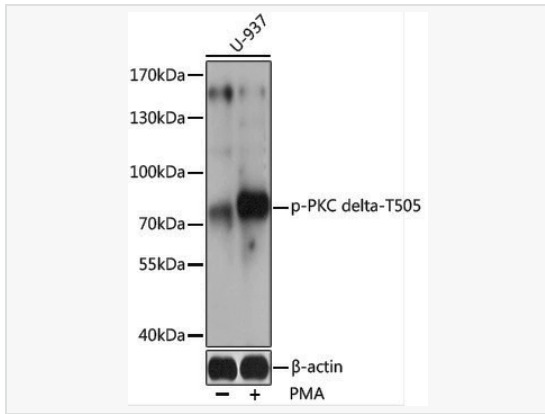
|             |  |
|-------------|--|
| Application | WB, ELISA  |
| Reactivity  | Human  |
| Dilution    | WB 1:500~1:2,000   |
| Host        | Rabbit   |
| Clonality   | Polyclonal   |
| Isotype     | IgG  |
| Label       | Unconjugated   |
| Immunogen   | A synthetic phosphorylated peptide around T505 of human PKC delta (NP_006245.2).   |
| Format      | Affinity purified polyclonal antibody supplied in PBS with 0.02% sodium azide and 50% glycerol, pH 7.3.                      |
| Storage     | Shipped on wet ice. Store at -20°C. Stable for 24 months from date of receipt. Aliquoting is unnecessary for -20°C storage.  |
| Precautions | Anti-Phospho-PKC delta (Thr505) Rabbit pAb is for research use only and not for use in diagnostic or therapeutic procedures. |

### Protein Information

|               |   |
|---------------|---|
| Synonyms      | MAY1; PKCD; ALPS3; CVID9; nPKC-delta; Phospho-PKC delta-T505.   |
| Calculated MW | Calculated MW: 78 kDa; Observed MW: 77 kDa  |
| Uniprot ID    | Q05655  |
| Gene ID       | 5580  |
| Background    | The protein encoded by this gene is a member of the protein kinase C family of serine- and threonine-specific protein kinases. The encoded protein is activated by diacylglycerol and is both a tumor suppressor and a positive regulator of cell cycle progression. Also, this protein can positively or negatively regulate apoptosis. Defects in this gene are a cause of autoimmune lymphoproliferative syndrome. |

## Validation Images

---



Western blot analysis of lysates from U-937 cells, using Phospho-PKC delta-T505 Rabbit pAb (P108757) at 1:2,000 dilution. U-937 cells were treated by PMA/TPA (200nM) for 30 minutes.

Secondary antibody: HRP-conjugated Goat anti-Rabbit IgG (H+L) (LF102) at 1:10,000 dilution.

Lysates/proteins: 25µg per lane.

Blocking buffer: 3% BSA.

Detection: ECL Kit (SQ201).

Exposure time: 60s.