

Anti-Phospho-Smad3 (Ser425) Rabbit pAb

Purified Rabbit Polyclonal Antibody

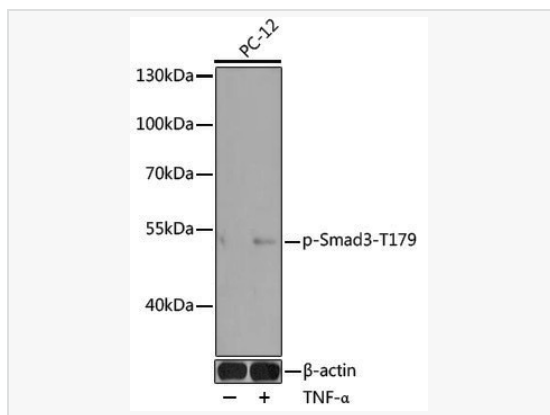
Catalog # P108742

Product Information

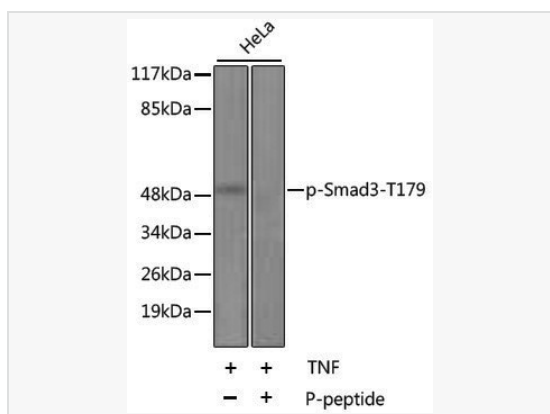
Application	WB, IHC-P/IF (Tissue-P), ELISA
Reactivity	Human, Mouse, Rat
Dilution	WB 1:500~1:2,000; IHC-P 1:50~1:200
Host	Rabbit
Clonality	Polyclonal
Isotype	IgG
Label	Unconjugated
Immunogen	A synthetic phosphorylated peptide around T179 of human Smad3 (NP_005893.1).
Format	Affinity purified polyclonal antibody supplied in PBS with 0.02% sodium azide and 50% glycerol, pH 7.3.
Storage	Shipped on wet ice. Store at -20°C. Stable for 24 months from date of receipt. Aliquoting is unnecessary for -20°C storage.
Precautions	Anti-Phospho-Smad3 (Ser425) Rabbit pAb is for research use only and not for use in diagnostic or therapeutic procedures.

Protein Information

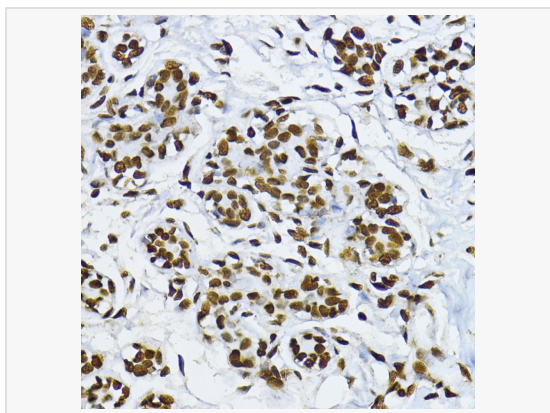
Synonyms	LDS3; mad3; LDS1C; MADH3; JV15-2; hMAD-3; hSMAD3; HSPC193; HsT17436; Phospho-Smad3-T179.
Calculated MW	Calculated MW: 48 kDa; Observed MW: 48 kDa
Uniprot ID	P84022
Gene ID	4088
Background	The SMAD family of proteins are a group of intracellular signal transducer proteins similar to the gene products of the <i>Drosophila</i> gene 'mothers against decapentaplegic' (Mad) and the <i>C. elegans</i> gene Sma. The SMAD3 protein functions in the transforming growth factor-beta signaling pathway, and transmits signals from the cell surface to the nucleus, regulating gene activity and cell proliferation. This protein forms a complex with other SMAD proteins and binds DNA, functioning both as a transcription factor and tumor suppressor. Mutations in this gene are associated with aneurysms-osteoarthritis syndrome and Loeys-Dietz Syndrome 3.



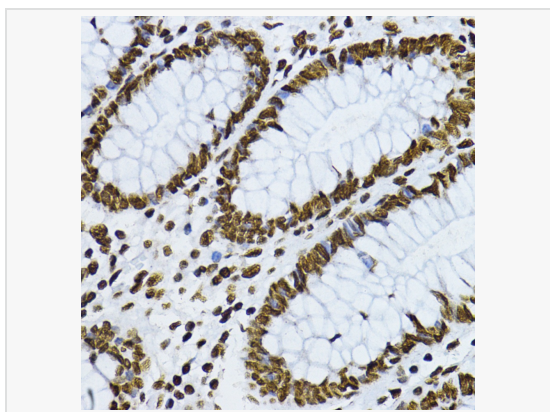
Western blot analysis of lysates from PC-12 cells, using Phospho-Smad2-S465/467/-Smad3-S423/425 pAb (P108742) at 1:1,000 dilution. PC-12 cells were treated by TNF- α (20 ng/mL) at 37°C for 30 minutes after serum-starvation overnight. Secondary antibody: HRP-conjugated Goat anti-Rabbit IgG (H+L) (LF102) at 1:10,000 dilution. Lysates/proteins: 25 μ g per lane. Blocking buffer: 3% BSA. Detection: ECL Kit (SQ201). Exposure time: 30s.



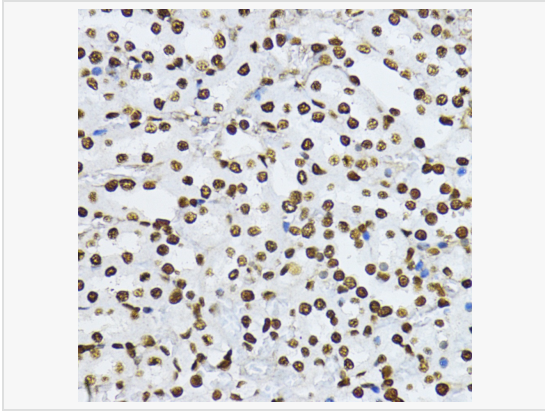
Western blot analysis of lysates from HeLa cells, using Phospho-Smad3-T179 Rabbit pAb (P108742). HeLa cells were treated by TNF- α (20 ng/mL) at 37°C for 30 minutes after serum-starvation overnight. Secondary antibody: HRP-conjugated Goat anti-Rabbit IgG (H+L) (LF102) at 1:10,000 dilution. Lysates/proteins: 25 μ g per lane. Blocking buffer: 3% BSA.



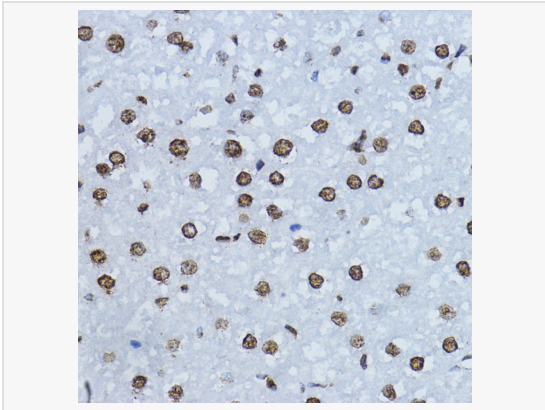
Immunohistochemistry analysis of paraffin-embedded Human breast using Phospho-Smad3-T179 Rabbit pAb (P108742) at dilution of 1:200 (40 \times lens). Microwave antigen retrieval performed with 0.01M Tris/EDTA Buffer (pH 9.0) prior to IHC staining.



Immunohistochemistry analysis of paraffin-embedded Human colon using Phospho-Smad3-T179 Rabbit pAb (P108742) at dilution of 1:200 (40 \times lens). Microwave antigen retrieval performed with 0.01M Tris/EDTA Buffer (pH 9.0) prior to IHC staining.



Immunohistochemistry analysis of paraffin-embedded Mouse kidney using Phospho-Smad3-T179 Rabbit pAb (P108742) at dilution of 1:200 (40× lens). Microwave antigen retrieval performed with 0.01M Tris/EDTA Buffer (pH 9.0) prior to IHC staining.



Immunohistochemistry analysis of paraffin-embedded Rat liver using Phospho-Smad3-T179 Rabbit pAb (P108742) at dilution of 1:200 (40× lens). Microwave antigen retrieval performed with 0.01M Tris/EDTA Buffer (pH 9.0) prior to IHC staining.