

# Anti-Phospho-IKB alpha (Ser32) Rabbit pAb

Purified Rabbit Polyclonal Antibody

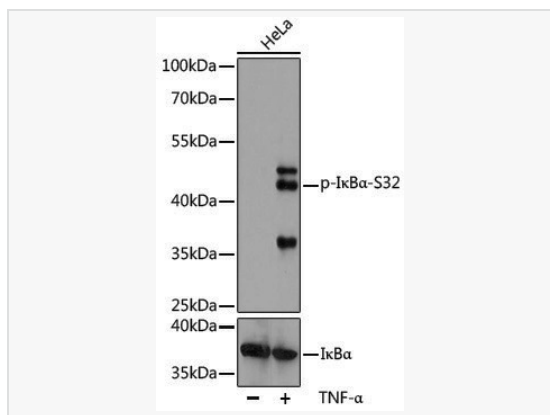
Catalog # P108473

## Product Information

Application	WB, IHC-P/IF (Tissue-P), IF (Cell)/ICC, ELISA
Reactivity	Human, Mouse, Rat
Dilution	WB 1:500~1:2,000; IHC-P 1:50~1:200; IF 1:50~1:200
Host	Rabbit
Clonality	Polyclonal
Isotype	IgG
Label	Unconjugated
Immunogen	A synthetic phosphorylated peptide around S32 of human IκBα (NP_065390.1).
Format	Affinity purified polyclonal antibody supplied in PBS with 0.02% sodium azide and 50% glycerol, pH 7.3.
Storage	Shipped on wet ice. Store at -20°C. Stable for 24 months from date of receipt. Aliquoting is unnecessary for -20°C storage.
Precautions	Anti-Phospho-IKB alpha (Ser32) Rabbit pAb is for research use only and not for use in diagnostic or therapeutic procedures.

## Protein Information

Synonyms	IKBA; MAD-3; NFKBI; EDAID2; Phospho-IκBα-S32.
Calculated MW	Calculated MW: 36 kDa; Observed MW: 39 kDa/41 kDa
Uniprot ID	P25963
Gene ID	4792
Background	This gene encodes a member of the NF-kappa-B inhibitor family, which contain multiple ankrin repeat domains. The encoded protein interacts with REL dimers to inhibit NF-kappa-B/REL complexes which are involved in inflammatory responses. The encoded protein moves between the cytoplasm and the nucleus via a nuclear localization signal and CRM1-mediated nuclear export. Mutations in this gene have been found in ectodermal dysplasia anhidrotic with T-cell immunodeficiency autosomal dominant disease.



Western blot analysis of lysates from HeLa cells, using Phospho-IκBα-S32 Rabbit pAb (P108473) or IκBα Rabbit pAb (P100832). HeLa cells were treated by TNF-α (20 ng/mL) at 37°C for 30 minutes.

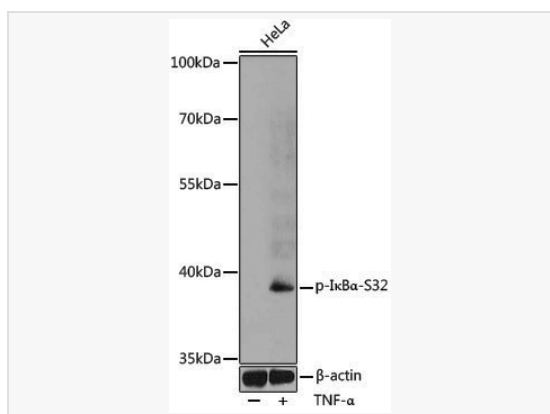
Secondary antibody: HRP-conjugated Goat anti-Rabbit IgG (H+L) (LF102) at 1:10,000 dilution.

Lysates/proteins: 25μg per lane.

Blocking buffer: 3% BSA.

Detection: ECL Kit (SQ201).

Exposure time: 3min.



Western blot analysis of lysates from HeLa cells, using Phospho-IκBα-S32 Rabbit pAb (P108473) at 1:1,000 dilution. HeLa cells were treated by TNF-α (20 ng/mL) at 37°C for 30 minutes.

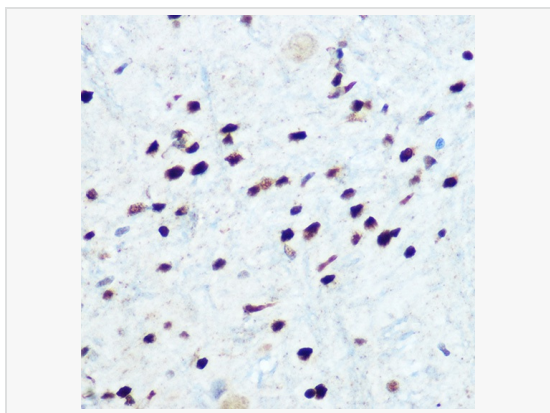
Secondary antibody: HRP-conjugated Goat anti-Rabbit IgG (H+L) (LF102) at 1:10,000 dilution.

Lysates/proteins: 25μg per lane.

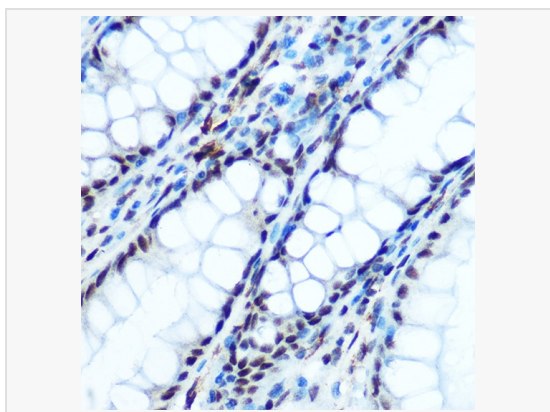
Blocking buffer: 3% BSA.

Detection: ECL Kit (SQ201).

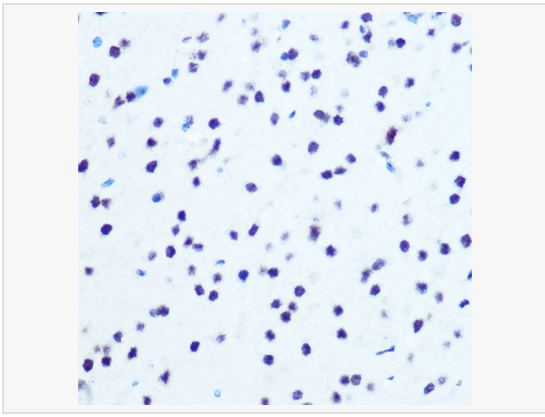
Exposure time: 90s.



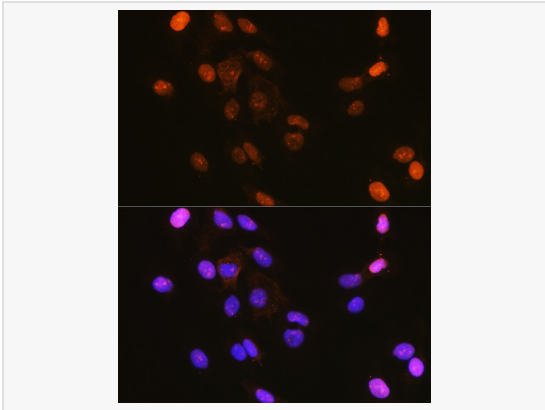
Immunohistochemistry analysis of paraffin-embedded Rat brain using Phospho-IκBα-S32 Rabbit pAb (P108473) at dilution of 1:100 (40× lens). Microwave antigen retrieval performed with 0.01M Tris/EDTA Buffer (pH 9.0) prior to IHC staining.



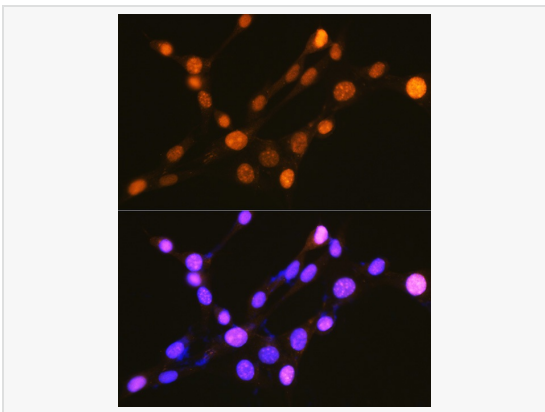
Immunohistochemistry analysis of paraffin-embedded Human colon using Phospho-IκBα-S32 Rabbit pAb (P108473) at dilution of 1:100 (40× lens). Microwave antigen retrieval performed with 0.01M Tris/EDTA Buffer (pH 9.0) prior to IHC staining.



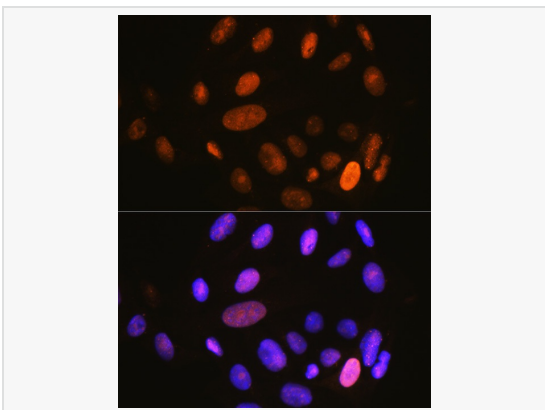
Immunohistochemistry analysis of paraffin-embedded Mouse brain using Phospho-I $\kappa$ B $\alpha$ -S32 Rabbit pAb (P108473) at dilution of 1:100 (40 $\times$  lens). Microwave antigen retrieval performed with 0.01M Tris/EDTA Buffer (pH 9.0) prior to IHC staining.



Immunofluorescence analysis of C6 cells using Phospho-I $\kappa$ B $\alpha$ -S32 Rabbit pAb (P108473) at dilution of 1:100 (40 $\times$  lens). Secondary antibody: Cy3-conjugated Goat anti-Rabbit IgG (H+L) at 1:500 dilution. Blue: DAPI for nuclear staining.



Immunofluorescence analysis of NIH-3T3 cells using Phospho-I $\kappa$ B $\alpha$ -S32 Rabbit pAb (P108473) at dilution of 1:100 (40 $\times$  lens). Secondary antibody: Cy3-conjugated Goat anti-Rabbit IgG (H+L) at 1:500 dilution. Blue: DAPI for nuclear staining.



Immunofluorescence analysis of U-2 OS cells using Phospho-I $\kappa$ B $\alpha$ -S32 Rabbit pAb (P108473) at dilution of 1:100 (40 $\times$  lens). Secondary antibody: Cy3-conjugated Goat anti-Rabbit IgG (H+L) at 1:500 dilution. Blue: DAPI for nuclear staining.