

Anti-p16 ARC Rabbit pAb

Purified Rabbit Polyclonal Antibody

Catalog # P108410

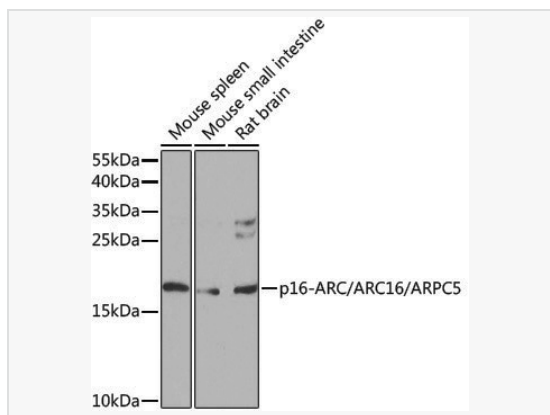
Product Information

Application	WB, ELISA
Reactivity	Human, Mouse, Rat
Dilution	WB 1:500~1:2,000
Host	Rabbit
Clonality	Polyclonal
Isotype	IgG
Label	Unconjugated
Immunogen	Recombinant fusion protein containing a sequence corresponding to amino acids 1-154 of human p16-ARC/ARC16/p16-ARC/ARC16/ARPC5 (NP_001257368.1).
Format	Affinity purified polyclonal antibody supplied in PBS with 0.02% sodium azide and 50% glycerol, pH 7.3.
Storage	Shipped on wet ice. Store at -20°C. Stable for 24 months from date of receipt. Aliquoting is unnecessary for -20°C storage.
Precautions	Anti-p16 ARC Rabbit pAb is for research use only and not for use in diagnostic or therapeutic procedures.

Protein Information

Synonyms	ARC16; p16-Arc; dJ127C7.3; p16-ARC/ARC16/ARPC5.
Calculated MW	Calculated MW: 16 kDa; Observed MW: 18 kDa
Uniprot ID	O15511
Gene ID	10092
Background	This gene encodes one of seven subunits of the human Arp2/3 protein complex. The Arp2/3 protein complex has been implicated in the control of actin polymerization in cells and has been conserved through evolution. The exact role of the protein encoded by this gene, the p16 subunit, has yet to be determined. Alternatively spliced transcript variants encoding different isoforms have been observed for this gene.

Validation Images



Western blot analysis of various lysates using p16-ARC/ARC16/ARPC5 Rabbit pAb (P108410) at 1:1,000 dilution.

Secondary antibody: HRP-conjugated Goat anti-Rabbit IgG (H+L) (LF102) at 1:10,000 dilution.

Lysates/proteins: 25 μ g per lane.

Blocking buffer: 3% nonfat dry milk in TBST.

Detection: ECL Kit (SQ201).

Exposure time: 90s.