

Anti-Phospho-CDK1 (Thr161) Rabbit pAb

Purified Rabbit Polyclonal Antibody

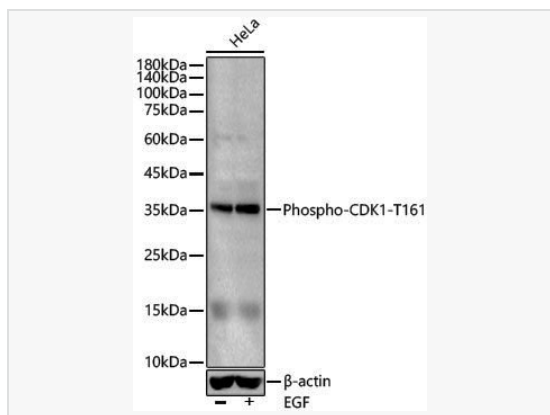
Catalog # P108184

Product Information

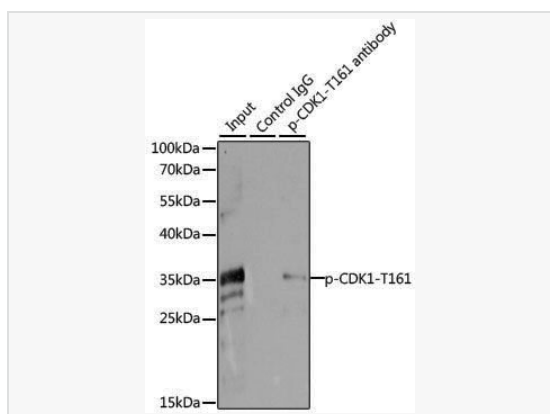
Application	WB, IHC-P/IF (Tissue-P), IF (Cell)/ICC, IP, ELISA
Reactivity	Human, Mouse, Rat
Dilution	WB 1:100~1:500; IHC-P 1:50~1:200; IF 1:50~1:200; IP 0.5µg-4µg antibody for 200µg-400µg extracts of whole cells
Host	Rabbit
Clonality	Polyclonal
Isotype	IgG
Label	Unconjugated
Immunogen	A synthetic phosphorylated peptide around T161 of human CDK1 (NP_001777.1).
Format	Affinity purified polyclonal antibody supplied in PBS with 0.02% sodium azide and 50% glycerol, pH 7.3.
Storage	Shipped on wet ice. Store at -20°C. Stable for 24 months from date of receipt. Aliquoting is unnecessary for -20°C storage.
Precautions	Anti-Phospho-CDK1 (Thr161) Rabbit pAb is for research use only and not for use in diagnostic or therapeutic procedures.

Protein Information

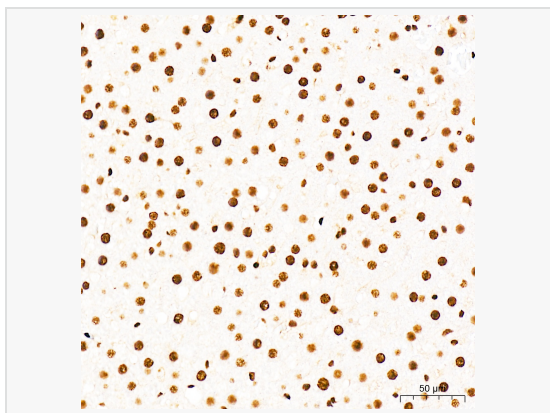
Synonyms	CDC2; CDC28A; P34CDC2; Phospho-CDK1-T161.
Calculated MW	Calculated MW: 34 kDa; Observed MW: 34 kDa
Uniprot ID	P06493
Gene ID	983
Background	The protein encoded by this gene is a member of the Ser/Thr protein kinase family. This protein is a catalytic subunit of the highly conserved protein kinase complex known as M-phase promoting factor (MPF), which is essential for G1/S and G2/M phase transitions of eukaryotic cell cycle. Mitotic cyclins stably associate with this protein and function as regulatory subunits. The kinase activity of this protein is controlled by cyclin accumulation and destruction through the cell cycle. The phosphorylation and dephosphorylation of this protein also play important regulatory roles in cell cycle control. Alternatively spliced transcript variants encoding different isoforms have been found for this gene.



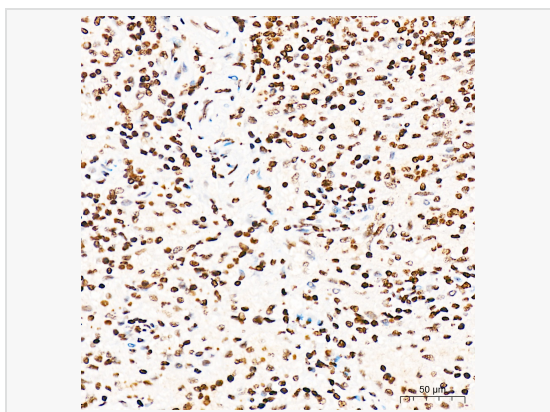
Western blot analysis of lysates from HeLa cells, using Phospho-CDK1-T161 Rabbit pAb (P108184) at 1:400 dilution. HeLa cells were treated by EGF. Secondary antibody: HRP-conjugated Goat anti-Rabbit IgG (H+L) (LF102) at 1:10,000 dilution.
Lysates/proteins: 25µg per lane.
Blocking buffer: 3% nonfat dry milk in TBST.
Detection: ECL Kit (SQ201).
Exposure time: 90s.



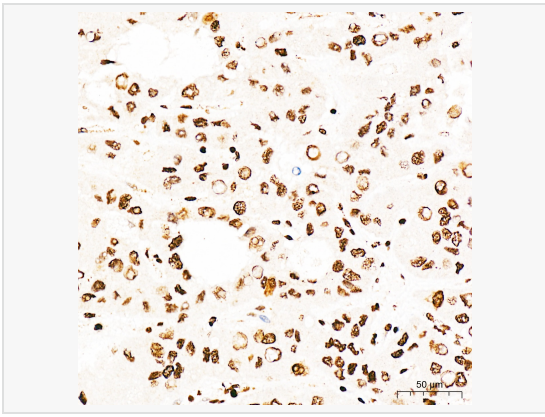
Immunoprecipitation analysis of 200 µg extracts of HeLa cells, using 3 µg Phospho-CDK1-T161 pAb (P108184). Western blot was performed from the immunoprecipitate using Phospho-CDK1-T161 pAb (P108184) at a dilution of 1:1000. HeLa cells were treated by EGF (100 ng/mL) at 37°C for 30 minutes after serum-starvation overnight.



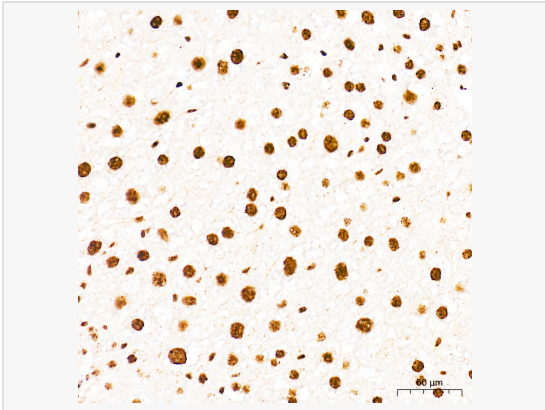
Immunohistochemistry analysis of paraffin-embedded Rat liver tissue using Phospho-CDK1-T161 Rabbit pAb (P108184) at a dilution of 1:300 (40× lens). High pressure antigen retrieval performed with 0.01M Citrate Bufferr (pH 6.0) prior to IHC staining.



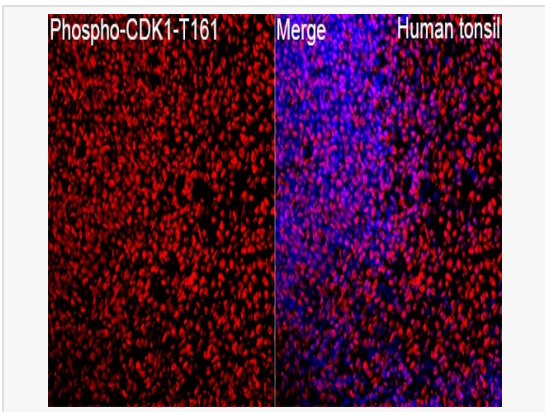
Immunohistochemistry analysis of paraffin-embedded Human spleen tissue using Phospho-CDK1-T161 Rabbit pAb (P108184) at a dilution of 1:300 (40× lens). High pressure antigen retrieval performed with 0.01M Citrate Bufferr (pH 6.0) prior to IHC staining.



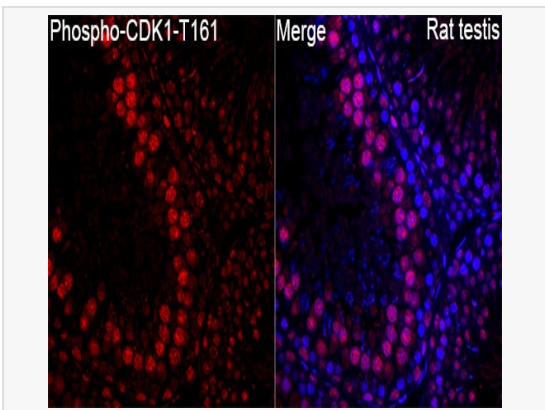
Immunohistochemistry analysis of paraffin-embedded Human liver cancer tissue using Phospho-CDK1-T161 Rabbit pAb (P108184) at a dilution of 1:300 (40× lens). High pressure antigen retrieval performed with 0.01M Citrate Buffer (pH 6.0) prior to IHC staining.



Immunohistochemistry analysis of paraffin-embedded Mouse liver tissue using Phospho-CDK1-T161 Rabbit pAb (P108184) at a dilution of 1:300 (40× lens). High pressure antigen retrieval performed with 0.01M Citrate Buffer (pH 6.0) prior to IHC staining.



Immunofluorescence analysis of Human tonsil tissue using Phospho-CDK1-T161 Rabbit pAb (P108184) at a dilution of 1:100 (40× lens). Secondary antibody: Cy3-conjugated Goat anti-Rabbit IgG (H+L) at 1:500 dilution. Blue: DAPI for nuclear staining. High pressure antigen retrieval performed with 0.01M Citrate Buffer (pH 6.0) prior to IF staining.



Immunofluorescence analysis of Rat testis tissue using Phospho-CDK1-T161 Rabbit pAb (P108184) at a dilution of 1:100 (40× lens). Secondary antibody: Cy3-conjugated Goat anti-Rabbit IgG (H+L) at 1:500 dilution. Blue: DAPI for nuclear staining. High pressure antigen retrieval performed with 0.01M Citrate Buffer (pH 6.0) prior to IF staining.