

## Anti-Phospho-MEK1 (Ser217)/MEK2 (Ser221) Rabbit pAb

Purified Rabbit Polyclonal Antibody

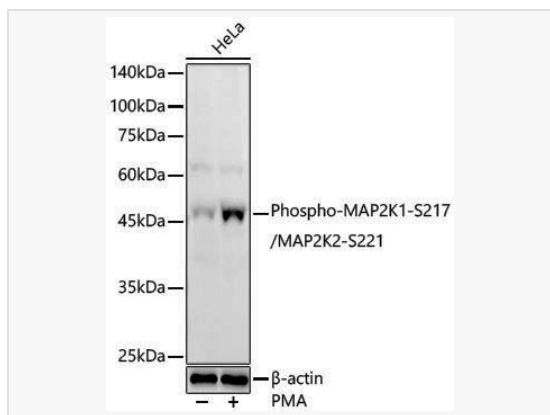
Catalog # P108149

### Product Information

Application	WB, ELISA
Reactivity	Human, Mouse, Rat
Dilution	WB 1:2,000~1:7,000
Host	Rabbit
Clonality	Polyclonal
Isotype	IgG
Label	Unconjugated
Immunogen	A synthetic phosphorylated peptide around S217 & S221 of human MAP2K1/MAP2K2MAP2K1 (NP_002746.1).
Format	Affinity purified polyclonal antibody supplied in PBS with 0.02% sodium azide and 50% glycerol, pH 7.3.
Storage	Shipped on wet ice. Store at -20°C. Stable for 24 months from date of receipt. Aliquoting is unnecessary for -20°C storage.
Precautions	Anti-Phospho-MEK1 (Ser217)/MEK2 (Ser221) Rabbit pAb is for research use only and not for use in diagnostic or therapeutic procedures.

### Protein Information

Synonyms	MEK1/MEK2; Phospho-MAP2K1-S217/MAP2K2-S221.
Calculated MW	Calculated MW: 40 kDa/43 kDa/44 kDa; Observed MW: 44 kDa
Uniprot ID	Q02750,P36507
Gene ID	5604, 5605
Background	The protein encoded by this gene is a member of the dual specificity protein kinase family, which acts as a mitogen-activated protein (MAP) kinase kinase. MAP kinases, also known as extracellular signal-regulated kinases (ERKs), act as an integration point for multiple biochemical signals. This protein kinase lies upstream of MAP kinases and stimulates the enzymatic activity of MAP kinases upon wide variety of extra- and intracellular signals. As an essential component of MAP kinase signal transduction pathway, this kinase is involved in many cellular processes such as proliferation, differentiation, transcription regulation and development. [provided by RefSeq, Jul 2008]



Western blot analysis of lysates from HeLa cells using Phospho-MAP2K1-S217/MAP2K2-S221 Rabbit pAb (P108149) at 1:6,000 dilution. HeLa cells were treated by PMA (200 nM) at 37°C for 15 minutes after serum-starvation overnight. Secondary antibody: HRP-conjugated Goat anti-Rabbit IgG (H+L) (LF102) at 1:10,000 dilution.

Lysates/proteins: 25 µg per lane.

Blocking buffer: 3% nonfat dry milk in TBST.

Detection: ECL Enhanced Kit (SQ201).

Exposure time: 90s.