

Anti-Phospho-MEK1 (Ser298) Rabbit pAb

Purified Rabbit Polyclonal Antibody

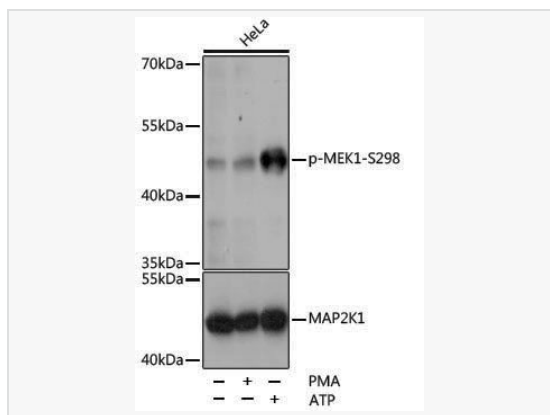
Catalog # P108111

Product Information

Application	WB, IP, ELISA
Reactivity	Human, Mouse, Rat
Dilution	WB 1:500~1:2,000; IP 0.5μg-4μg antibody for 200μg-400μg extracts of whole cells
Host	Rabbit
Clonality	Polyclonal
Isotype	IgG
Label	Unconjugated
Immunogen	A synthetic phosphorylated peptide around S298 of human MEK1 (NP_002746.1).
Format	Affinity purified polyclonal antibody supplied in PBS with 0.02% sodium azide and 50% glycerol, pH 7.3.
Storage	Shipped on wet ice. Store at -20°C. Stable for 24 months from date of receipt. Aliquoting is unnecessary for -20°C storage.
Precautions	Anti-Phospho-MEK1 (Ser298) Rabbit pAb is for research use only and not for use in diagnostic or therapeutic procedures.

Protein Information

Synonyms	MEL; CFC3; MEK1; MKK1; MAPKK1; PRKMK1; Phospho-MEK1-S298.
Calculated MW	Calculated MW: 43 kDa; Observed MW: 43 kDa
Uniprot ID	Q02750
Gene ID	5604
Background	The protein encoded by this gene is a member of the dual specificity protein kinase family, which acts as a mitogen-activated protein (MAP) kinase kinase. MAP kinases, also known as extracellular signal-regulated kinases (ERKs), act as an integration point for multiple biochemical signals. This protein kinase lies upstream of MAP kinases and stimulates the enzymatic activity of MAP kinases upon wide variety of extra- and intracellular signals. As an essential component of MAP kinase signal transduction pathway, this kinase is involved in many cellular processes such as proliferation, differentiation, transcription regulation and development.



Western blot analysis of various lysates using Phospho-MEK1-S298 Rabbit pAb (P108111) at 1:1,000 dilution or MEK1 antibody (P101265). HeLa cells were treated by PMA/TPA (200 nM) at 37°C for 15 minutes after serum-starvation overnight or treated by ATP(5 mM) at 30°C for 1 hour.

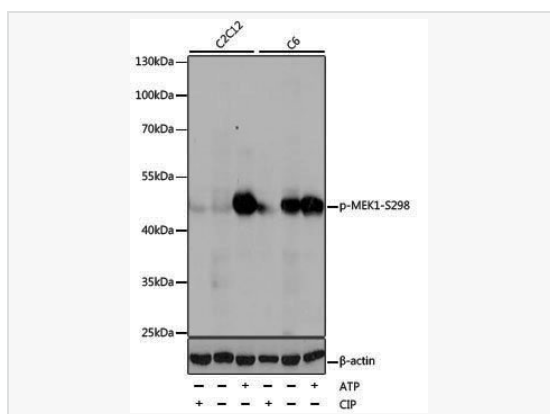
Secondary antibody: HRP-conjugated Goat anti-Rabbit IgG (H+L) (LF102) at 1:10,000 dilution.

Lysates/proteins: 25µg per lane.

Blocking buffer: 3% BSA.

Detection: ECL Kit (SQ201).

Exposure time: 1s.



Western blot analysis of various lysates using Phospho-MEK1-S298 Rabbit pAb (P108111) at 1:1,000 dilution. C2C12 cells were treated by CIP(20uL/400ul) at 37°C for 1 hour or treated by ATP(5 mM) at 30°C for 1 hour. C6 cells were treated by CIP(20uL/400ul) at 37°C for 1 hour or treated by ATP(5 mM) at 30°C for 1 hour.

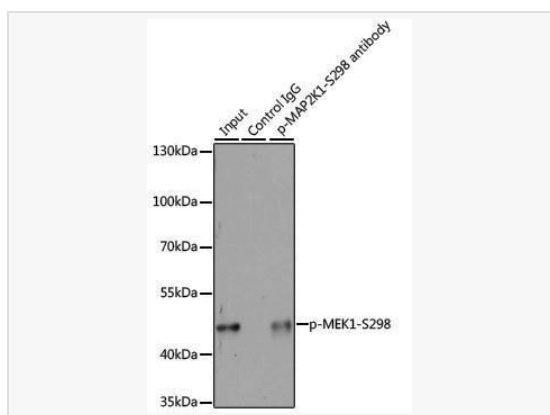
Secondary antibody: HRP-conjugated Goat anti-Rabbit IgG (H+L) (LF102) at 1:10,000 dilution.

Lysates/proteins: 25µg per lane.

Blocking buffer: 3% BSA.

Detection: ECL Kit (SQ201).

Exposure time: 1s.



Immunoprecipitation analysis of 200 µg extracts of 293T cells, using 3 µg Phospho-MEK1-S298 pAb (P108111). Western blot was performed from the immunoprecipitate using Phospho-MEK1-S298 pAb (P108111) at a dilution of 1:1000. 293T cells were treated by PMA/TPA (200 nM) at 37°C for 30 minutes after serum-starvation overnight.