

Anti-Phospho-4E-BP1 (Ser65) Rabbit pAb

Purified Rabbit Polyclonal Antibody

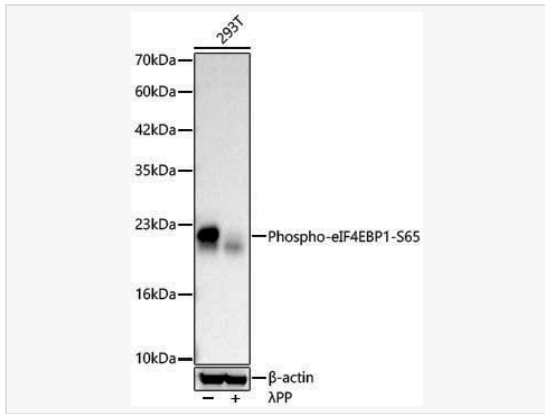
Catalog # P108088

Product Information

Application	WB, ELISA
Reactivity	Human
Dilution	WB 1:500~1:1,000
Host	Rabbit
Clonality	Polyclonal
Isotype	IgG
Label	Unconjugated
Immunogen	A synthetic phosphorylated peptide around S65 of human Phospho-eIF4EBP1-S65 (NP_004086.1).
Format	Affinity purified polyclonal antibody supplied in PBS with 0.02% sodium azide and 50% glycerol, pH 7.3.
Storage	Shipped on wet ice. Store at -20°C. Stable for 24 months from date of receipt. Aliquoting is unnecessary for -20°C storage.
Precautions	Anti-Phospho-4E-BP1 (Ser65) Rabbit pAb is for research use only and not for use in diagnostic or therapeutic procedures.

Protein Information

Synonyms	BP-1; 4EBP1; 4E-BP1; PHAS-I; Phospho-eIF4EBP1-S65.
Calculated MW	Calculated MW: 13 kDa; Observed MW: 15-20 kDa
Uniprot ID	Q13541
Gene ID	1978
Background	This gene encodes one member of a family of translation repressor proteins. The protein directly interacts with eukaryotic translation initiation factor 4E (eIF4E), which is a limiting component of the multisubunit complex that recruits 40S ribosomal subunits to the 5' end of mRNAs. Interaction of this protein with eIF4E inhibits complex assembly and represses translation. This protein is phosphorylated in response to various signals including UV irradiation and insulin signaling, resulting in its dissociation from eIF4E and activation of mRNA translation.



Western blot analysis of lysates from 293T cells using Phospho-eIF4EBP1-S65 Rabbit pAb (P108088) at 1:700 dilution. 293T cells were treated by λ PP mixed solution (1ul) at 37°C for 30 minutes.

Secondary antibody: HRP-conjugated Goat anti-Rabbit IgG (H+L) (LF102) at 1:10,000 dilution.

Lysates/proteins: 25 μ g per lane.

Blocking buffer: 3% nonfat dry milk in TBST.

Detection: ECL Kit (SQ201).

Exposure time: 60s.