

## Anti-SQSTM1/p62 Rabbit pAb

Purified Rabbit Polyclonal Antibody

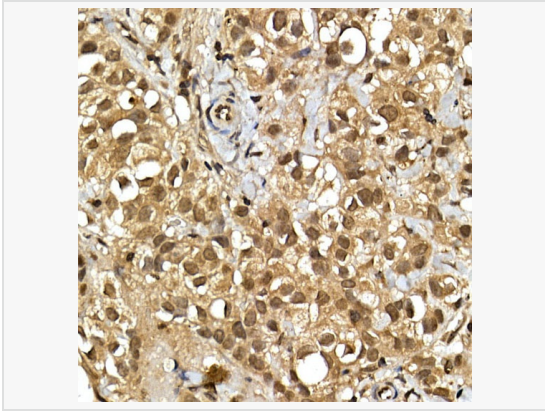
Catalog # P107792

### Product Information

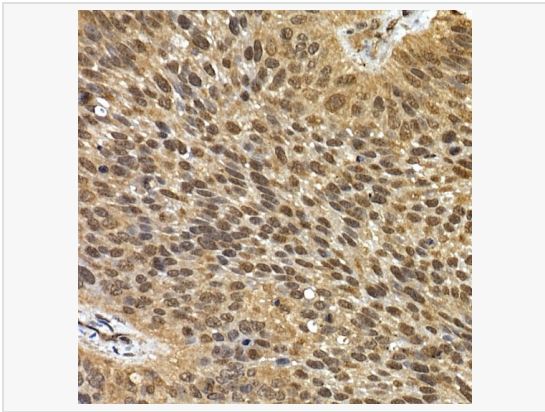
Application	WB, IHC-P/IF (Tissue-P), IF (Cell)/ICC, ELISA
Reactivity	Human, Mouse, Rat
Dilution	WB 1:1,000~1:5,000; IHC-P 1:50~1:200; IF 1:50~1:200
Host	Rabbit
Clonality	Polyclonal
Isotype	IgG
Label	Unconjugated
Immunogen	Recombinant fusion protein containing a sequence corresponding to amino acids 1-440 of human SQSTM1/p62 (NP_003891.1).
Format	Affinity purified polyclonal antibody supplied in PBS with 0.02% sodium azide and 50% glycerol, pH 7.3.
Storage	Shipped on wet ice. Store at -20°C. Stable for 24 months from date of receipt. Aliquoting is unnecessary for -20°C storage.
Precautions	Anti-SQSTM1/p62 Rabbit pAb is for research use only and not for use in diagnostic or therapeutic procedures.

### Protein Information

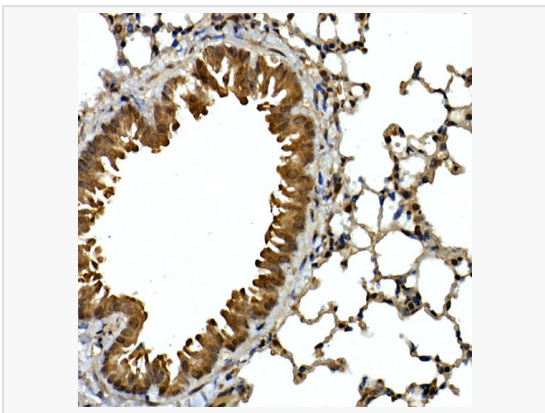
Synonyms	p60; p62; A170; DMRV; OSIL; PDB3; ZIP3; p62B; NADGP; FTDALS3; SQSTM1/p62.
Calculated MW	Calculated MW: 48 kDa; Observed MW: 62 kDa
Uniprot ID	Q13501
Gene ID	8878
Background	This gene encodes a multifunctional protein that binds ubiquitin and regulates activation of the nuclear factor kappa-B (NF-κB) signaling pathway. The protein functions as a scaffolding/adaptor protein in concert with TNF receptor-associated factor 6 to mediate activation of NF-κB in response to upstream signals. Alternatively spliced transcript variants encoding either the same or different isoforms have been identified for this gene. Mutations in this gene result in sporadic and familial Paget disease of bone.



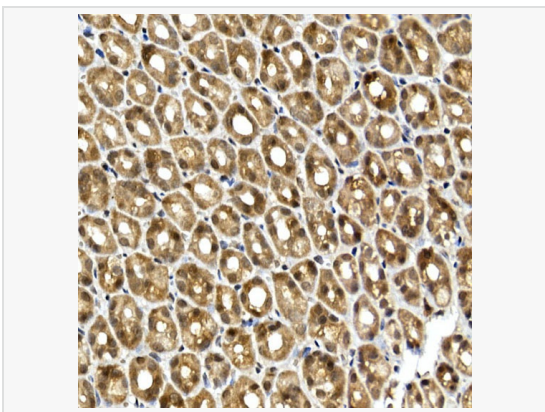
Immunohistochemistry analysis of paraffin-embedded Human breast cancer using SQSTM1/p62 Rabbit pAb (P107792) at dilution of 1:100 (40× lens). High pressure antigen retrieval performed with 0.01M Citrate Bufferr (pH 6.0) prior to IHC staining.



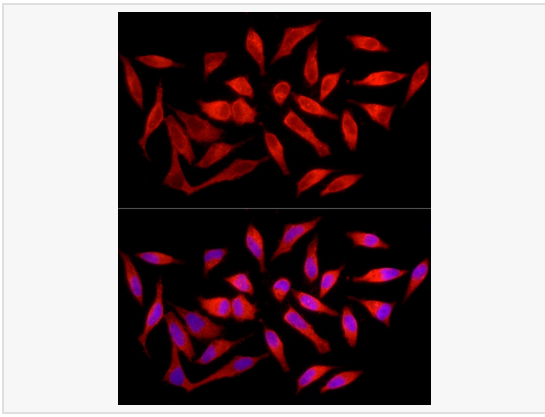
Immunohistochemistry analysis of paraffin-embedded Human lung cancer using SQSTM1/p62 Rabbit pAb (P107792) at dilution of 1:100 (40× lens). High pressure antigen retrieval performed with 0.01M Citrate Bufferr (pH 6.0) prior to IHC staining.



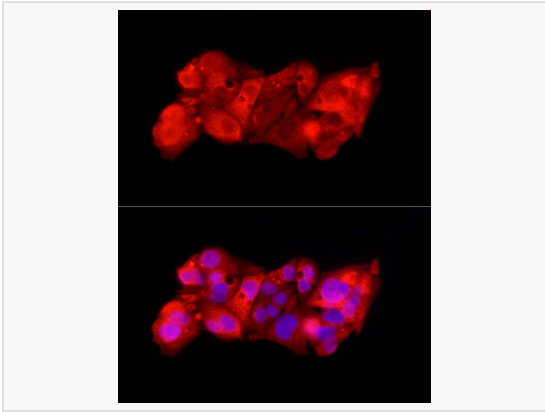
Immunohistochemistry analysis of paraffin-embedded Mouse lung using SQSTM1/p62 Rabbit pAb (P107792) at dilution of 1:100 (40× lens). High pressure antigen retrieval performed with 0.01M Citrate Bufferr (pH 6.0) prior to IHC staining.



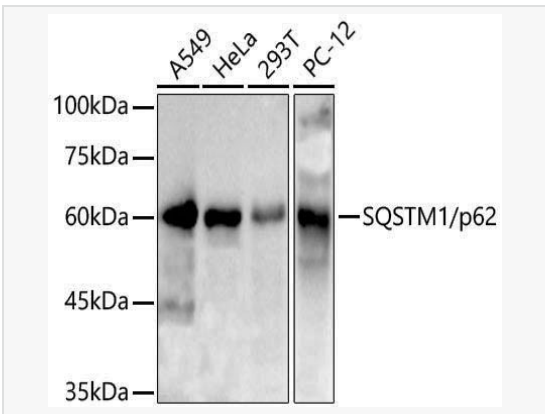
Immunohistochemistry analysis of paraffin-embedded Rat stomach using SQSTM1/p62 Rabbit pAb (P107792) at dilution of 1:100 (40× lens). High pressure antigen retrieval performed with 0.01M Citrate Bufferr (pH 6.0) prior to IHC staining.



Immunofluorescence analysis of HeLa cells using SQSTM1/p62 Rabbit pAb (P107792) at dilution of 1:100 (40× lens). Secondary antibody: Cy3-conjugated Goat anti-Rabbit IgG (H+L) at 1:500 dilution. Blue: DAPI for nuclear staining.



Immunofluorescence analysis of HepG2 cells using SQSTM1/p62 Rabbit pAb (P107792) at dilution of 1:100 (40× lens). Secondary antibody: Cy3-conjugated Goat anti-Rabbit IgG (H+L) at 1:500 dilution. Blue: DAPI for nuclear staining.



Western blot analysis of various lysates using SQSTM1/p62 Rabbit pAb (P107792) at 1:3,000 dilution.  
Secondary antibody: HRP-conjugated Goat anti-Rabbit IgG (H+L) (LF102) at 1:10,000 dilution.  
Lysates / proteins: 25 µg per lane.  
Blocking buffer: 3 % nonfat dry milk in TBST.  
Detection: ECL Kit (SQ201).  
Exposure time: 3s.