

Anti-PKA C gamma Rabbit pAb

Purified Rabbit Polyclonal Antibody

Catalog # P107766

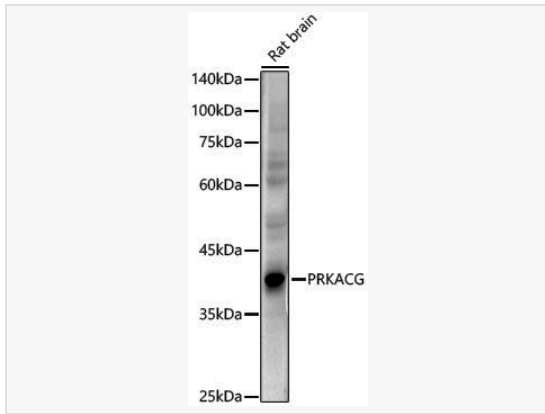
Product Information

Application	WB, ELISA
Reactivity	Human, Mouse, Rat
Dilution	WB 1:100~1:500
Host	Rabbit
Clonality	Polyclonal
Isotype	IgG
Label	Unconjugated
Immunogen	A synthetic peptide corresponding to a sequence within amino acids 1-351 of human PRKACG (NP_002723.2).
Format	Affinity purified polyclonal antibody supplied in PBS with 0.02% sodium azide and 50% glycerol, pH 7.3.
Storage	Shipped on wet ice. Store at -20°C. Stable for 24 months from date of receipt. Aliquoting is unnecessary for -20°C storage.
Precautions	Anti-PKA C gamma Rabbit pAb is for research use only and not for use in diagnostic or therapeutic procedures.

Protein Information

Synonyms	KAPG; PKACg; BDPLT19; PRKACG.
Calculated MW	Calculated MW: 40 kDa; Observed MW: 40 kDa
Uniprot ID	P22612
Gene ID	5568
Background	Cyclic AMP-dependent protein kinase (PKA) consists of two catalytic subunits and a regulatory subunit dimer. This gene encodes the gamma form of its catalytic subunit. The gene is intronless and is thought to be a retrotransposon derived from the gene for the alpha form of the PKA catalytic subunit.

Validation Images



Western blot analysis of lysates from Rat brain, using PRKACG Rabbit pAb (P107766) at 1:500 dilution.

Secondary antibody: HRP-conjugated Goat anti-Rabbit IgG (H+L) (LF102) at 1:10,000 dilution.

Lysates/proteins: 25 μ g per lane.

Blocking buffer: 3% nonfat dry milk in TBST.

Detection: ECL Enhanced Kit (SQ201).

Exposure time: 60s.