

Anti-Dcp1a Rabbit pAb

Purified Rabbit Polyclonal Antibody

Catalog # P107090

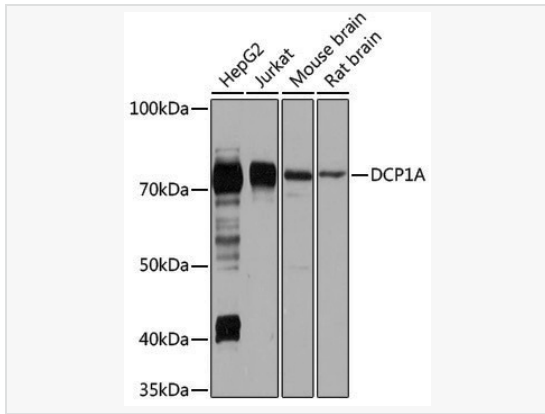
Product Information

Application	WB, ELISA
Reactivity	Human, Mouse, Rat
Dilution	WB 1:500~1:2,000
Host	Rabbit
Clonality	Polyclonal
Isotype	IgG
Label	Unconjugated
Immunogen	Recombinant fusion protein containing a sequence corresponding to amino acids 303-582 of human DCP1A (NP_060873.4).
Format	Affinity purified polyclonal antibody supplied in PBS with 0.02% sodium azide and 50% glycerol, pH 7.3.
Storage	Shipped on wet ice. Store at -20°C. Stable for 24 months from date of receipt. Aliquoting is unnecessary for -20°C storage.
Precautions	Anti-Dcp1a Rabbit pAb is for research use only and not for use in diagnostic or therapeutic procedures.

Protein Information

Synonyms	SMIF; SMAD4IP1; HSA275986; Nbla00360; DCP1A.
Calculated MW	Calculated MW: 63 kDa; Observed MW: 70 kDa
Uniprot ID	Q9NPI6
Gene ID	55802
Background	Decapping is a key step in general and regulated mRNA decay. The protein encoded by this gene is a decapping enzyme. This protein and another decapping enzyme form a decapping complex, which interacts with the nonsense-mediated decay factor hUpf1 and may be recruited to mRNAs containing premature termination codons. This protein also participates in the TGF-beta signaling pathway. Alternative splicing of this gene results in multiple transcript variants.

Validation Images



Western blot analysis of various lysates using DCP1A Rabbit pAb (P107090) at 1:500 dilution.

Secondary antibody: HRP-conjugated Goat anti-Rabbit IgG (H+L) (LF102) at 1:10,000 dilution.

Lysates/proteins: 25 μ g per lane.

Blocking buffer: 3% nonfat dry milk in TBST.

Detection: ECL Kit (SQ201).

Exposure time: 30s.