

Anti-GSK3 beta Rabbit pAb

Purified Rabbit Polyclonal Antibody

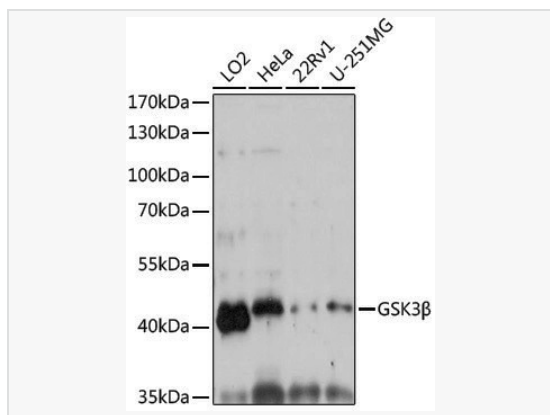
Catalog # P106873

Product Information

Application	WB, IF (Cell)/ICC, IP, ELISA
Reactivity	Human, Mouse, Rat
Dilution	WB 1:500~1:1,000; IF 1:50~1:200; IP 0.5µg-4µg antibody for 200µg-400µg extracts of whole cells
Host	Rabbit
Clonality	Polyclonal
Isotype	IgG
Label	Unconjugated
Immunogen	A synthetic peptide corresponding to a sequence within amino acids 320-420 of human GSK3β (NP_001139628.1).
Format	Affinity purified polyclonal antibody supplied in PBS with 0.02% sodium azide and 50% glycerol, pH 7.3.
Storage	Shipped on wet ice. Store at -20°C. Stable for 24 months from date of receipt. Aliquoting is unnecessary for -20°C storage.
Precautions	Anti-GSK3 beta Rabbit pAb is for research use only and not for use in diagnostic or therapeutic procedures.

Protein Information

Synonyms	GSK3B; gsk-3β; GSK3β.
Calculated MW	Calculated MW: 47 kDa; Observed MW: 46 kDa
Uniprot ID	P49841
Gene ID	2932
Background	The protein encoded by this gene is a serine-threonine kinase belonging to the glycogen synthase kinase subfamily. It is a negative regulator of glucose homeostasis and is involved in energy metabolism, inflammation, ER-stress, mitochondrial dysfunction, and apoptotic pathways. Defects in this gene have been associated with Parkinson disease and Alzheimer disease.



Western blot analysis of various lysates using GSK3 β Rabbit pAb (P106873) at 1:1,000 dilution.

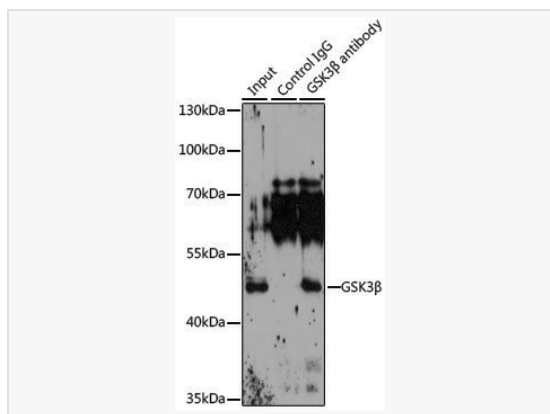
Secondary antibody: HRP-conjugated Goat anti-Rabbit IgG (H+L) (LF102) at 1:10,000 dilution.

Lysates/proteins: 25 μ g per lane.

Blocking buffer: 3% nonfat dry milk in TBST.

Detection: ECL Kit (SQ201).

Exposure time: 30s.



Immunoprecipitation analysis of 200 μ g extracts of 22Rv1 cells, using 3 μ g GSK3 β antibody (P106873). Western blot was performed from the immunoprecipitate using GSK3 β antibody (P106873) at a dilution of 1:1000.