

Anti-RNF7 Rabbit pAb

Purified Rabbit Polyclonal Antibody

Catalog # P106835

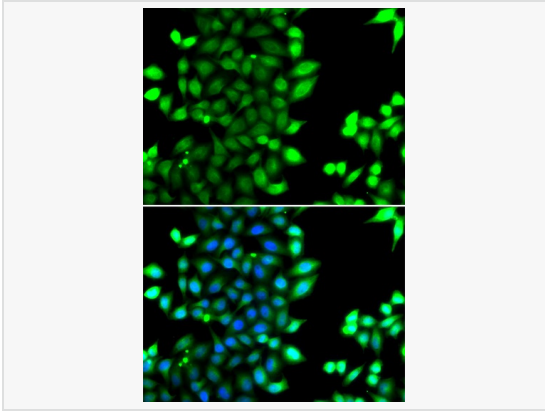
Product Information

Application	WB, IF (Cell)/ICC, ELISA
Reactivity	Human
Dilution	WB 1:500~1:2,000; IF 1:20~1:50
Host	Rabbit
Clonality	Polyclonal
Isotype	IgG
Label	Unconjugated
Immunogen	Recombinant fusion protein containing a sequence corresponding to amino acids 1-113 of human RNF7 (NP_055060.1).
Format	Affinity purified polyclonal antibody supplied in PBS with 0.02% sodium azide and 50% glycerol, pH 7.3.
Storage	Shipped on wet ice. Store at -20°C. Stable for 24 months from date of receipt. Aliquoting is unnecessary for -20°C storage.
Precautions	Anti-RNF7 Rabbit pAb is for research use only and not for use in diagnostic or therapeutic procedures.

Protein Information

Synonyms	SAG; ROC2; rbx2; CKBBP1; RNF7.
Calculated MW	Calculated MW: 13 kDa; Observed MW: Refer to figures
Uniprot ID	Q9UBF6
Gene ID	9616
Background	The protein encoded by this gene is a highly conserved ring finger protein. It is an essential subunit of SKP1-cullin/CDC53-F box protein ubiquitin ligases, which are a part of the protein degradation machinery important for cell cycle progression and signal transduction. This protein interacts with, and is a substrate of, casein kinase II (CSNK2A1/CKII). The phosphorylation of this protein by CSNK2A1 has been shown to promote the degradation of I κ B α (CHUK/IKK- α /IKBKA) and p27Kip1(CDKN1B). Alternatively spliced transcript variants encoding distinct isoforms have been reported.

Validation Images



Immunofluorescence analysis of MCF-7 cells using RNF7 Rabbit pAb (P106835).
Secondary antibody: Cy3-conjugated Goat anti-Rabbit IgG (H+L) at 1:500 dilution. Blue:
DAPI for nuclear staining.