

## Anti-BCL2 L14 Rabbit pAb

Purified Rabbit Polyclonal Antibody

Catalog # P106712

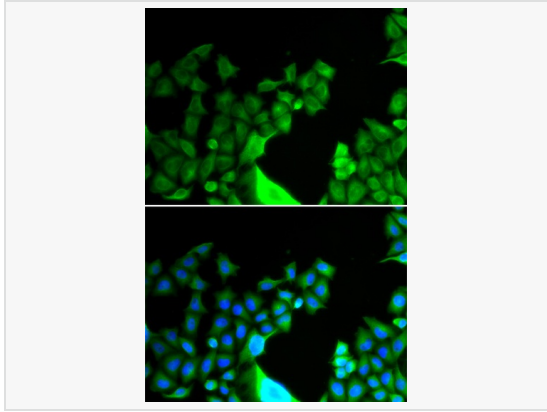
### Product Information

Application	WB, IF (Cell)/ICC, ELISA
Reactivity	Human, Mouse, Rat
Dilution	WB 1:500~1:2,000; IF 1:10~1:100
Host	Rabbit
Clonality	Polyclonal
Isotype	IgG
Label	Unconjugated
Immunogen	Recombinant fusion protein containing a sequence corresponding to amino acids 1-327 of human BCL2L14/BCLG (NP_620049.1).
Format	Affinity purified polyclonal antibody supplied in PBS with 0.02% sodium azide and 50% glycerol, pH 7.3.
Storage	Shipped on wet ice. Store at -20°C. Stable for 24 months from date of receipt. Aliquoting is unnecessary for -20°C storage.
Precautions	Anti-BCL2 L14 Rabbit pAb is for research use only and not for use in diagnostic or therapeutic procedures.

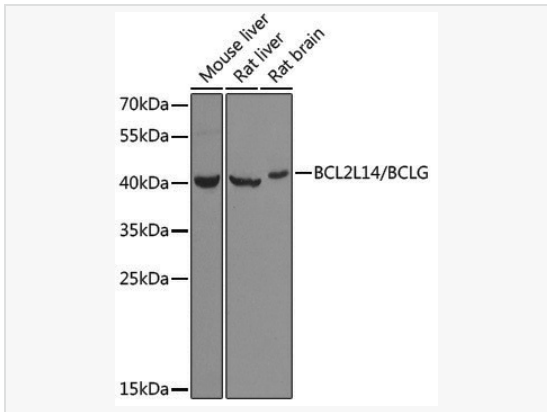
### Protein Information

Synonyms	BCLG; BCL2L14/BCLG.
Calculated MW	Calculated MW: 37 kDa; Observed MW: 39 kDa
Uniprot ID	Q9BZR8
Gene ID	79370
Background	The protein encoded by this gene belongs to the BCL2 protein family. BCL2 family members form hetero- or homodimers and act as anti- or pro-apoptotic regulators that are involved in a wide variety of cellular activities. Overexpression of this gene has been shown to induce apoptosis in cells. Three alternatively spliced transcript variants encoding two distinct isoforms have been reported for this gene.

## Validation Images



Immunofluorescence analysis of HeLa cells using BCL2L14/BCLG Rabbit pAb (P106712). Secondary antibody: Cy3-conjugated Goat anti-Rabbit IgG (H+L) at 1:500 dilution. Blue: DAPI for nuclear staining.



Western blot analysis of various lysates using BCL2L14/BCLG Rabbit pAb (P106712) at 1:1,000 dilution.

Secondary antibody: HRP-conjugated Goat anti-Rabbit IgG (H+L) (LF102) at 1:10,000 dilution.

Lysates/proteins: 25 $\mu$ g per lane.

Blocking buffer: 3% nonfat dry milk in TBST.

Detection: ECL Kit (SQ201).

Exposure time: 90s.