

Anti-ATG4B Rabbit pAb

Purified Rabbit Polyclonal Antibody

Catalog # P105918

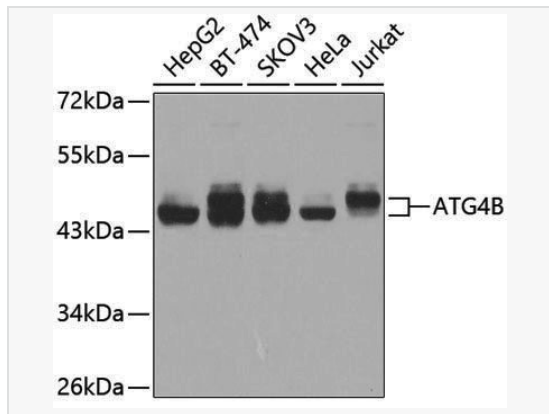
Product Information

| | |
|-------------|-----------------------------------------------------------------------------------------------------------------------------|
| Application | WB, ELISA |
| Reactivity | Human |
| Dilution | WB 1:500~1:1,000 |
| Host | Rabbit |
| Clonality | Polyclonal |
| Isotype | IgG |
| Label | Unconjugated |
| Immunogen | Recombinant fusion protein containing a sequence corresponding to amino acids 1-393 of human ATG4B (NP_037457.3). |
| Format | Affinity purified polyclonal antibody supplied in PBS with 0.02% sodium azide and 50% glycerol, pH 7.3. |
| Storage | Shipped on wet ice. Store at -20°C. Stable for 24 months from date of receipt. Aliquoting is unnecessary for -20°C storage. |
| Precautions | Anti-ATG4B Rabbit pAb is for research use only and not for use in diagnostic or therapeutic procedures. |

Protein Information

| | |
|---------------|-----------------------------------------------------------------------------------------------------------------------------------------------------------------------------------------------------------------------------------------------------------------------------------------------------------------------------------------------------------------------------------------------------------------------------------------------------------------------------------------------------------------------------------------------------------------------------------------------------------------------------------------------------------------------------------------------------------------------|
| Synonyms | APG4B; AUTL1; HsAPG4B; ATG4B. |
| Calculated MW | Calculated MW: 44 kDa; Observed MW: 48 kDa |
| Uniprot ID | Q9Y4P1 |
| Gene ID | 23192 |
| Background | Autophagy is the process by which endogenous proteins and damaged organelles are destroyed intracellularly. Autophagy is postulated to be essential for cell homeostasis and cell remodeling during differentiation, metamorphosis, non-apoptotic cell death, and aging. Reduced levels of autophagy have been described in some malignant tumors, and a role for autophagy in controlling the unregulated cell growth linked to cancer has been proposed. This gene encodes a member of the autophagin protein family. The encoded protein is also designated as a member of the C-54 family of cysteine proteases. Alternate transcriptional splice variants, encoding different isoforms, have been characterized. |

Validation Images



Western blot analysis of various lysates using ATG4B Rabbit pAb (P105918) at 1:1,000 dilution.

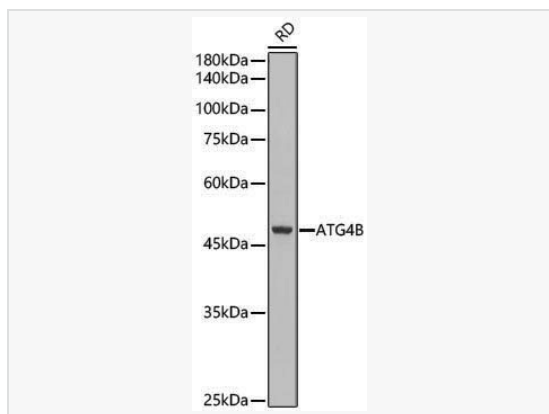
Secondary antibody: HRP-conjugated Goat anti-Rabbit IgG (H+L) (LF102) at 1:10,000 dilution.

Lysates/proteins: 25µg per lane.

Blocking buffer: 3% nonfat dry milk in TBST.

Detection: ECL Enhanced Kit (SQ201).

Exposure time: 60s.



Western blot analysis of lysates from RD cells using ATG4B Rabbit pAb (P105918) at 1:1,000 dilution.

Secondary antibody: HRP-conjugated Goat anti-Rabbit IgG (H+L) (LF102) at 1:10,000 dilution.

Lysates/proteins: 25 µg per lane.

Blocking buffer: 3% nonfat dry milk in TBST.

Detection: ECL Kit (SQ201).

Exposure time: 1s.