

## Anti-GSK3 beta Rabbit pAb

Purified Rabbit Polyclonal Antibody

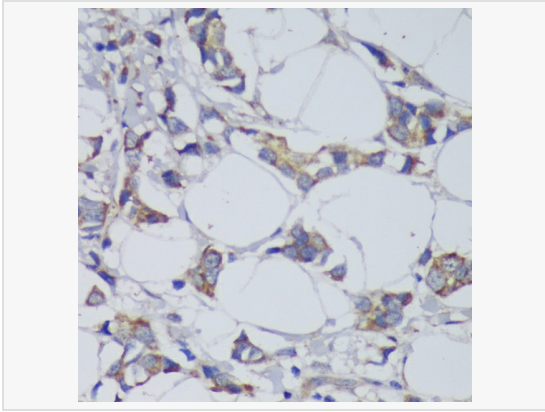
Catalog # P105100

### Product Information

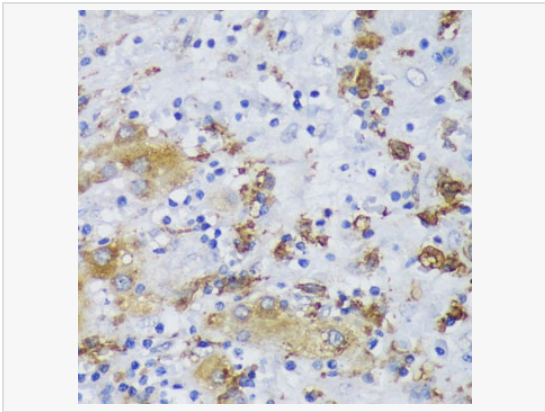
Application	WB, IHC-P/IF (Tissue-P), IF (Cell)/ICC, IP, ELISA
Reactivity	Human, Mouse, Rat
Dilution	WB 1:500~1:2,000; IHC-P 1:50~1:200; IF 1:50~1:200; IP 0.5μg-4μg antibody for 200μg-400μg extracts of whole cells
Host	Rabbit
Clonality	Polyclonal
Isotype	IgG
Label	Unconjugated
Immunogen	A synthetic peptide corresponding to a sequence within amino acids 350-420 of human GSK3β (NP_001139628.1).
Format	Affinity purified polyclonal antibody supplied in PBS with 0.02% sodium azide and 50% glycerol, pH 7.3.
Storage	Shipped on wet ice. Store at -20°C. Stable for 24 months from date of receipt. Aliquoting is unnecessary for -20°C storage.
Precautions	Anti-GSK3 beta Rabbit pAb is for research use only and not for use in diagnostic or therapeutic procedures.

### Protein Information

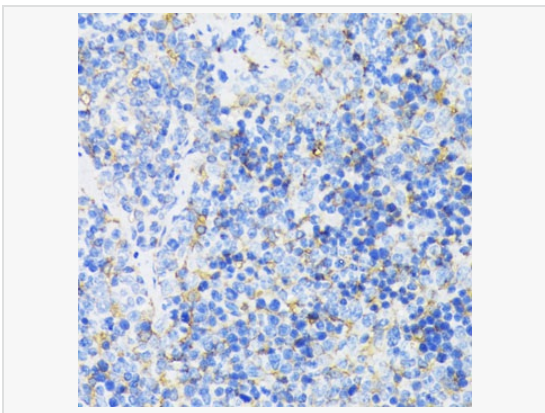
Synonyms	GSK3B; gsk-3β; GSK3β.
Calculated MW	Calculated MW: 47 kDa; Observed MW: 46 kDa
Uniprot ID	P49841
Gene ID	2932
Background	The protein encoded by this gene is a serine-threonine kinase belonging to the glycogen synthase kinase subfamily. It is a negative regulator of glucose homeostasis and is involved in energy metabolism, inflammation, ER-stress, mitochondrial dysfunction, and apoptotic pathways. Defects in this gene have been associated with Parkinson disease and Alzheimer disease.



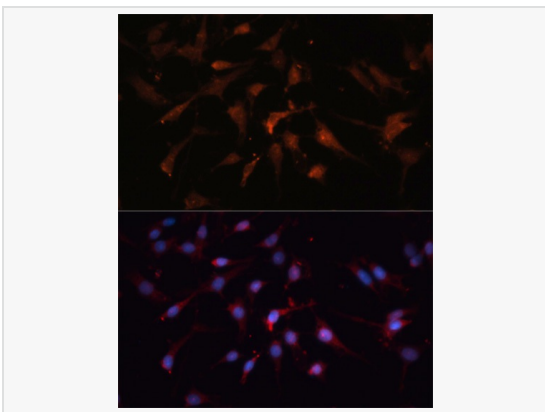
Immunohistochemistry analysis of paraffin-embedded Human mammary cancer using GSK3 $\beta$  Rabbit pAb (P105100) at dilution of 1:200 (40 $\times$  lens). Microwave antigen retrieval performed with 0.01M PBS Buffer (pH 7.2) prior to IHC staining.



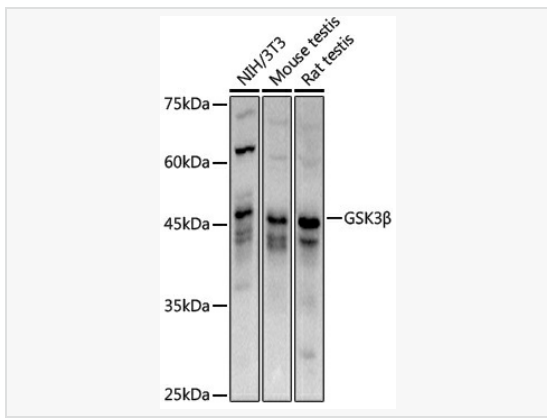
Immunohistochemistry analysis of paraffin-embedded Human liver cancer using GSK3 $\beta$  Rabbit pAb (P105100) at dilution of 1:200 (40 $\times$  lens). Microwave antigen retrieval performed with 0.01M PBS Buffer (pH 7.2) prior to IHC staining.



Immunohistochemistry analysis of paraffin-embedded Mouse spleen using GSK3 $\beta$  Rabbit pAb (P105100) at dilution of 1:200 (40 $\times$  lens). Microwave antigen retrieval performed with 0.01M PBS Buffer (pH 7.2) prior to IHC staining.



Immunofluorescence analysis of C6 cells using GSK3 $\beta$  Rabbit pAb (P105100) at dilution of 1:100. Blue: DAPI for nuclear staining.



Western blot analysis of various lysates using GSK3 $\beta$  Rabbit pAb (P105100) at 1:1,000 dilution.

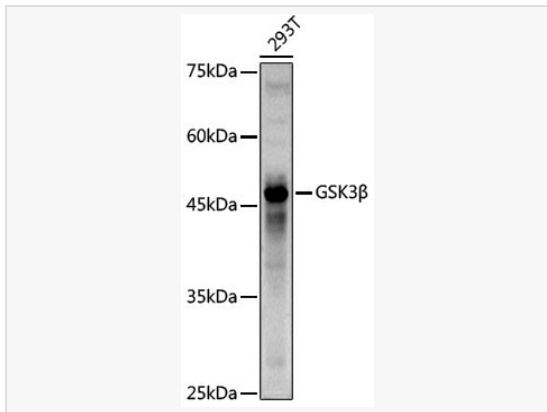
Secondary antibody: HRP-conjugated Goat anti-Rabbit IgG (H+L) (LF102) at 1:10,000 dilution.

Lysates/proteins: 25 $\mu$ g per lane.

Blocking buffer: 3% nonfat dry milk in TBST.

Detection: ECL Kit.

Exposure time: 3s.



Western blot analysis of lysates from 293T cells, using GSK3 $\beta$  Rabbit pAb (P105100) at 1:1,000 dilution.

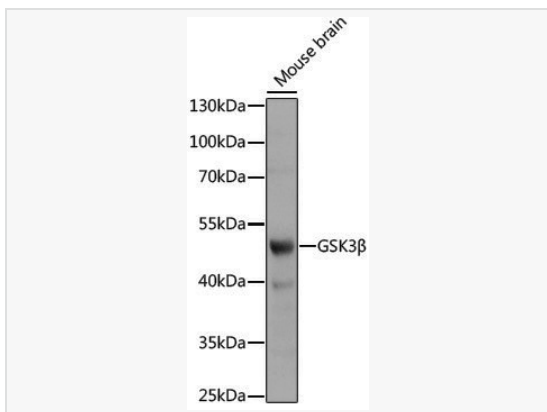
Secondary antibody: HRP-conjugated Goat anti-Rabbit IgG (H+L) (LF102) at 1:10,000 dilution.

Lysates/proteins: 25 $\mu$ g per lane.

Blocking buffer: 3% nonfat dry milk in TBST.

Detection: ECL Kit.

Exposure time: 90s.



Western blot analysis of lysates from mouse brain, using GSK3 $\beta$  Rabbit pAb (P105100) at 1:1,000 dilution.

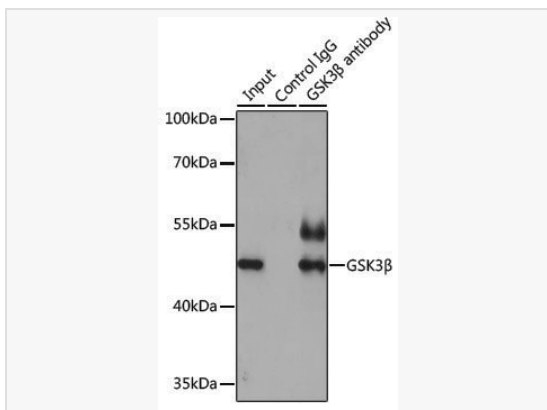
Secondary antibody: HRP-conjugated Goat anti-Rabbit IgG (H+L) (LF102) at 1:10,000 dilution.

Lysates/proteins: 25 $\mu$ g per lane.

Blocking buffer: 3% nonfat dry milk in TBST.

Detection: ECL Kit.

Exposure time: 90s.



Immunoprecipitation analysis of 200  $\mu$ g extracts of HeLa cells using 3  $\mu$ g GSK3 $\beta$  antibody (P105100). Western blot was performed from the immunoprecipitate using GSK3 $\beta$  antibody (P105100) at a dilution of 1:1000.