

# Anti-PP1C gamma Rabbit pAb

Purified Rabbit Polyclonal Antibody

Catalog # P104876

## Product Information

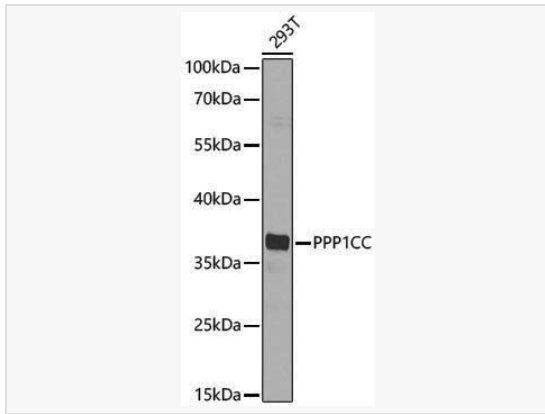
Application	WB, ELISA
Reactivity	Human
Dilution	WB 1:500~1:1,000
Host	Rabbit
Clonality	Polyclonal
Isotype	IgG
Label	Unconjugated
Immunogen	Recombinant fusion protein containing a sequence corresponding to amino acids 1-323 of human PPP1CC (NP_002701.1).
Format	Affinity purified polyclonal antibody supplied in PBS with 0.02% sodium azide and 50% glycerol, pH 7.3.
Storage	Shipped on wet ice. Store at -20°C. Stable for 24 months from date of receipt. Aliquoting is unnecessary for -20°C storage.
Precautions	Anti-PP1C gamma Rabbit pAb is for research use only and not for use in diagnostic or therapeutic procedures.

## Protein Information

Synonyms	PP1C; PP-1G; PPP1G; PPP1CC.
Calculated MW	Calculated MW: 37 kDa; Observed MW: 37 kDa
Uniprot ID	P36873
Gene ID	5501
Background	The protein encoded by this gene belongs to the protein phosphatase family, PP1 subfamily. PP1 is an ubiquitous serine/threonine phosphatase that regulates many cellular processes, including cell division. It is expressed in mammalian cells as three closely related isoforms, alpha, beta/delta and gamma, which have distinct localization patterns. This gene encodes the gamma isozyme. Alternatively spliced transcript variants encoding different isoforms have been found for this gene.

## Validation Images

---



Western blot analysis of lysates from 293T cells using PPP1CC Rabbit pAb (P104876) at 1:1,000 dilution.

Secondary antibody: HRP-conjugated Goat anti-Rabbit IgG (H+L) (LF102) at 1:10,000 dilution.

Lysates/proteins: 25  $\mu$ g per lane.

Blocking buffer: 3% nonfat dry milk in TBST.

Detection: ECL Enhanced Kit.

Exposure time: 60s.