

Anti-HP1 gamma Rabbit pAb

Purified Rabbit Polyclonal Antibody

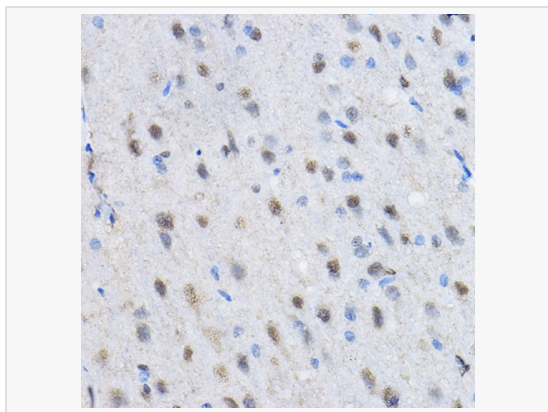
Catalog # P104851

Product Information

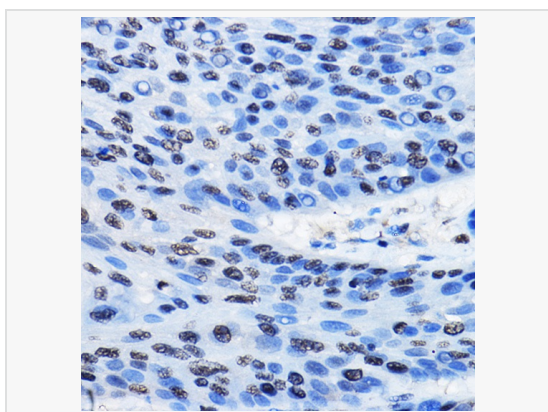
Application	WB, IHC-P/IF (Tissue-P), ELISA
Reactivity	Human, Mouse, Rat
Dilution	WB 1:500~1:1,000; IHC-P 1:50~1:200
Host	Rabbit
Clonality	Polyclonal
Isotype	IgG
Label	Unconjugated
Immunogen	Recombinant fusion protein containing a sequence corresponding to amino acids 1-183 of human HP1 gamma/CBX3 (NP_009207.2).
Format	Affinity purified polyclonal antibody supplied in PBS with 0.02% sodium azide and 50% glycerol, pH 7.3.
Storage	Shipped on wet ice. Store at -20°C. Stable for 24 months from date of receipt. Aliquoting is unnecessary for -20°C storage.
Precautions	Anti-HP1 gamma Rabbit pAb is for research use only and not for use in diagnostic or therapeutic procedures.

Protein Information

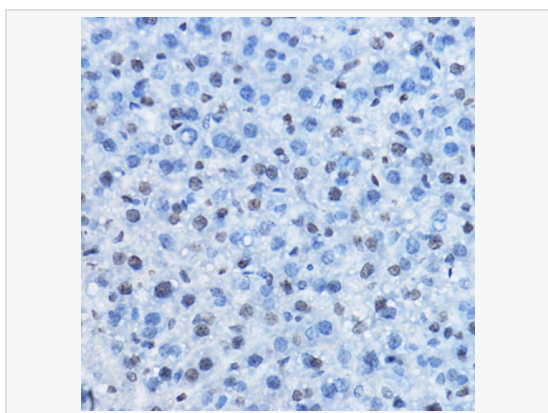
Synonyms	HECH; HP1-GAMMA; HP1Hs-gamma; HP1 gamma/CBX3.
Calculated MW	Calculated MW: 21 kDa; Observed MW: 21 kDa
Uniprot ID	Q13185
Gene ID	11335
Background	At the nuclear envelope, the nuclear lamina and heterochromatin are adjacent to the inner nuclear membrane. The protein encoded by this gene binds DNA and is a component of heterochromatin. This protein also can bind lamin B receptor, an integral membrane protein found in the inner nuclear membrane. The dual binding functions of the encoded protein may explain the association of heterochromatin with the inner nuclear membrane. This protein binds histone H3 tails methylated at Lys-9 sites. This protein is also recruited to sites of ultraviolet-induced DNA damage and double-strand breaks. Two transcript variants encoding the same protein but differing in the 5' UTR, have been found for this gene.



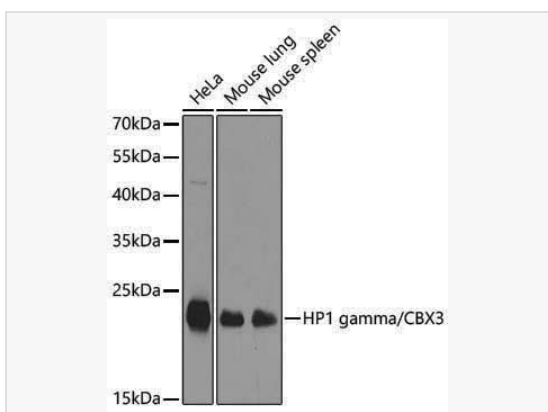
Immunohistochemistry analysis of paraffin-embedded Rat brain using HP1 gamma/HP1 gamma/CBX3 Rabbit pAb (P104851) at dilution of 1:50 (40× lens). High pressure antigen retrieval performed with 0.01M Citrate Bufferr (pH 6.0) prior to IHC staining.



Immunohistochemistry analysis of paraffin-embedded Human esophageal cancer using HP1 gamma/HP1 gamma/CBX3 Rabbit pAb (P104851) at dilution of 1:50 (40× lens). High pressure antigen retrieval performed with 0.01M Citrate Bufferr (pH 6.0) prior to IHC staining.



Immunohistochemistry analysis of paraffin-embedded Mouse liver using HP1 gamma/HP1 gamma/CBX3 Rabbit pAb (P104851) at dilution of 1:50 (40× lens). High pressure antigen retrieval performed with 0.01M Citrate Bufferr (pH 6.0) prior to IHC staining.



Western blot analysis of various lysates using HP1 gamma/CBX3 Rabbit pAb (P104851) at 1:1,000 dilution.

Secondary antibody: HRP-conjugated Goat anti-Rabbit IgG (H+L) (LF102) at 1:10,000 dilution.

Lysates / proteins: 25 µg per lane.

Blocking buffer: 3 % nonfat dry milk in TBST.

Detection: ECL Kit.

Exposure time: 1s.