

## Anti-Rad21 Rabbit pAb

Purified Rabbit Polyclonal Antibody

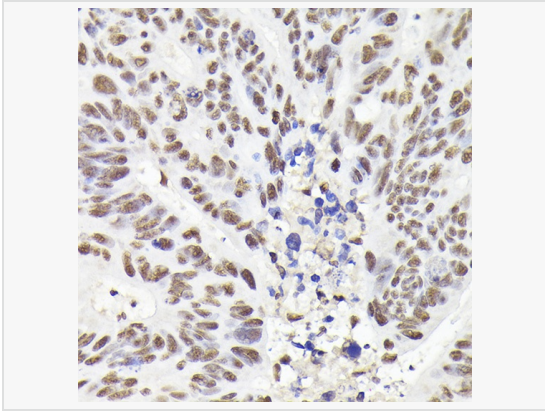
Catalog # P104687

### Product Information

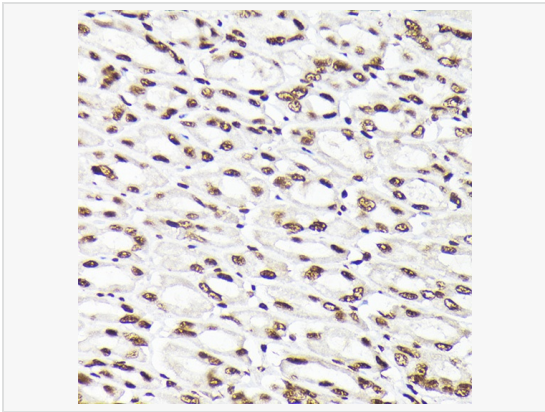
Application	WB, IHC-P/IF (Tissue-P), IF (Cell)/ICC, IP, ELISA, ChIP
Reactivity	Human, Mouse, Rat
Dilution	WB 1:500~1:1,000; IHC-P 1:50~1:200; IF 1:50~1:200; IP 0.5µg-4µg antibody for 200µg-400µg extracts of whole cells; ChIP 5µg antibody for 10µg-15µg of Chromatin
Host	Rabbit
Clonality	Polyclonal
Isotype	IgG
Label	Unconjugated
Immunogen	Recombinant fusion protein containing a sequence corresponding to amino acids 281-420 of human Rad21 (NP_006256.1).
Format	Affinity purified polyclonal antibody supplied in PBS with 0.02% sodium azide and 50% glycerol, pH 7.3.
Storage	Shipped on wet ice. Store at -20°C. Stable for 24 months from date of receipt. Aliquoting is unnecessary for -20°C storage.
Precautions	Anti-Rad21 Rabbit pAb is for research use only and not for use in diagnostic or therapeutic procedures.

### Protein Information

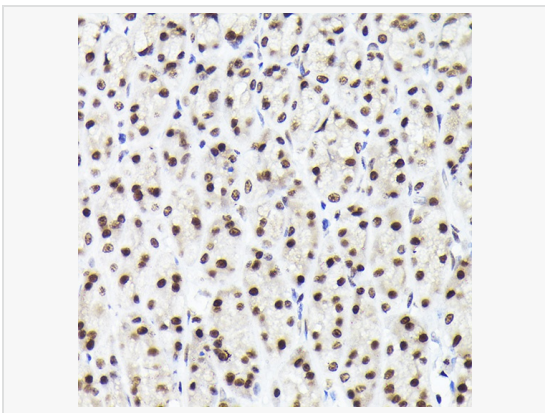
Synonyms	MGS; HR21; MCD1; NXP1; SCC1; CDLS4; hHR21; HRAD21; Rad21.
Calculated MW	Calculated MW: 72 kDa; Observed MW: 130 kDa
Uniprot ID	O60216
Gene ID	5885
Background	The protein encoded by this gene is highly similar to the gene product of <i>Schizosaccharomyces pombe rad21</i> , a gene involved in the repair of DNA double-strand breaks, as well as in chromatid cohesion during mitosis. This protein is a nuclear phospho-protein, which becomes hyperphosphorylated in cell cycle M phase. The highly regulated association of this protein with mitotic chromatin specifically at the centromere region suggests its role in sister chromatid cohesion in mitotic cells.



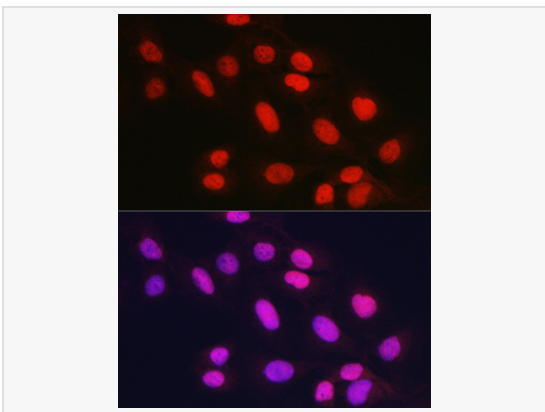
Immunohistochemistry analysis of paraffin-embedded Human colon carcinoma using Rad21 Rabbit pAb (P104687) at dilution of 1:200 (40× lens). High pressure antigen retrieval performed with 0.01M Citrate Bufferr (pH 6.0) prior to IHC staining.



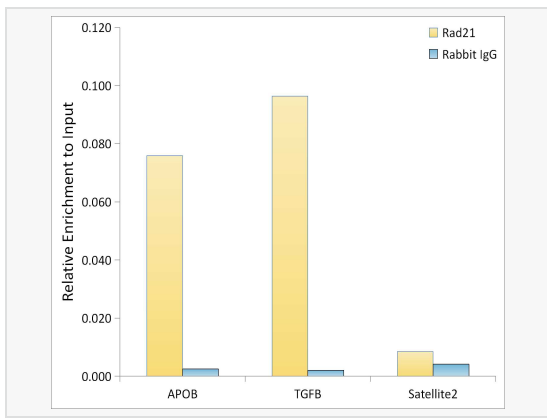
Immunohistochemistry analysis of paraffin-embedded Mouse stomach using Rad21 Rabbit pAb (P104687) at dilution of 1:200 (40× lens). High pressure antigen retrieval performed with 0.01M Citrate Bufferr (pH 6.0) prior to IHC staining.



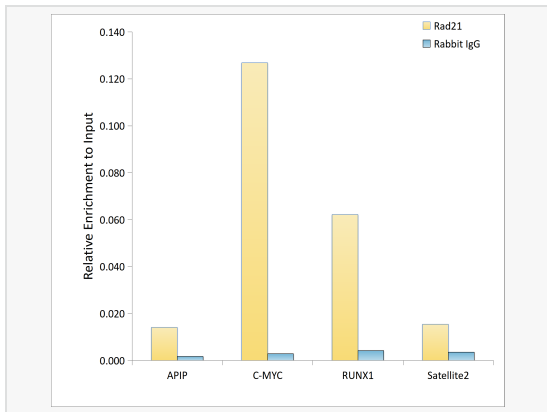
Immunohistochemistry analysis of paraffin-embedded Rat stomach using Rad21 Rabbit pAb (P104687) at dilution of 1:200 (40× lens). High pressure antigen retrieval performed with 0.01M Citrate Bufferr (pH 6.0) prior to IHC staining.



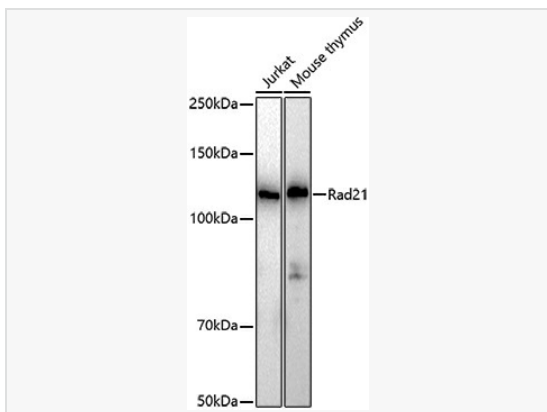
Immunofluorescence analysis of U2OS cells using Rad21 Rabbit pAb (P104687) at dilution of 1:100 (40× lens). Secondary antibody: Cy3-conjugated Goat anti-Rabbit IgG (H+L) at 1:500 dilution. Blue: DAPI for nuclear staining.



Chromatin immunoprecipitation analysis of extracts of A-549 cells, using Rad21 antibody (P104687) and rabbit IgG. The amount of immunoprecipitated DNA was checked by quantitative PCR. Histogram was constructed by the ratios of the immunoprecipitated DNA to the input.



Chromatin immunoprecipitation analysis of extracts of A-549 cells, using Rad21 antibody (P104687) and rabbit IgG. The amount of immunoprecipitated DNA was checked by quantitative PCR. Histogram was constructed by the ratios of the immunoprecipitated DNA to the input.



Western blot analysis of various lysates using Rad21 Rabbit pAb (P104687) at 1:1,000 dilution.

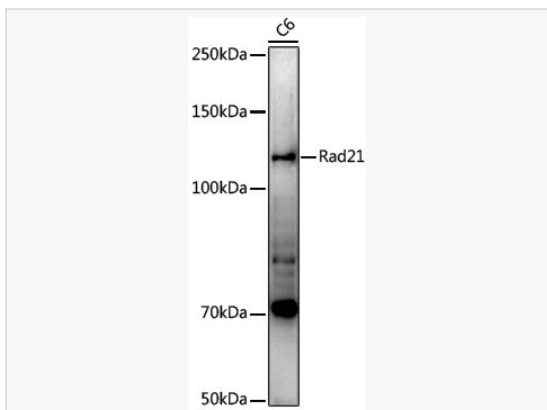
Secondary antibody: HRP-conjugated Goat anti-Rabbit IgG (H+L) (LF102) at 1:10,000 dilution.

Lysates/proteins: 25µg per lane.

Blocking buffer: 3% nonfat dry milk in TBST.

Detection: ECL Kit.

Exposure time: 10s.



Western blot analysis of lysates from C6 cells, using Rad21 Rabbit pAb (P104687) at 1:1,000 dilution.

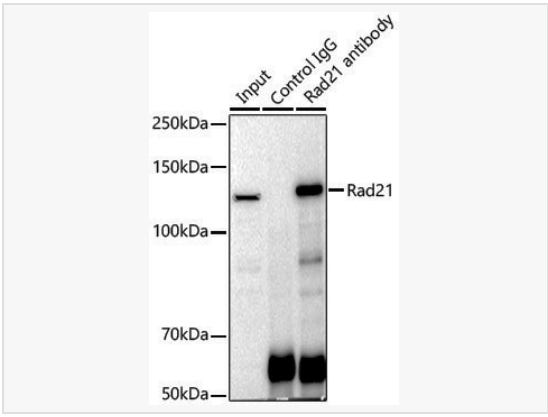
Secondary antibody: HRP-conjugated Goat anti-Rabbit IgG (H+L) (LF102) at 1:10,000 dilution.

Lysates/proteins: 25µg per lane.

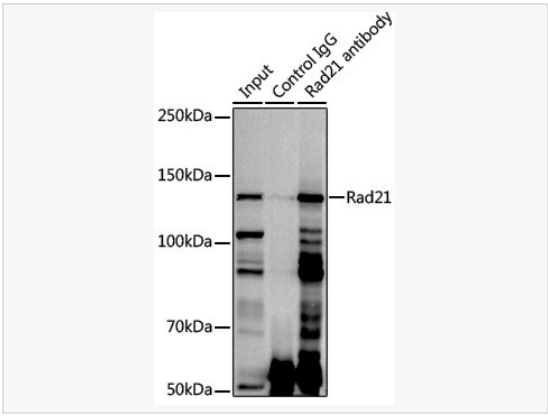
Blocking buffer: 3% nonfat dry milk in TBST.

Detection: ECL Enhanced Kit.

Exposure time: 90s.



Immunoprecipitation analysis of 300  $\mu\text{g}$  extracts of Jurkat cells using 3  $\mu\text{g}$  Rad21 antibody (P104687). Western blot was performed from the immunoprecipitate using Rad21 antibody (P104687) at a dilution of 1:1000.



Immunoprecipitation analysis of 300  $\mu\text{g}$  extracts of Jurkat cells using 3  $\mu\text{g}$  Rad21 antibody (P104687). Western blot was performed from the immunoprecipitate using Rad21 antibody (P104687) at a dilution of 1:1000.