

## Anti-EGFR Rabbit pAb

Purified Rabbit Polyclonal Antibody

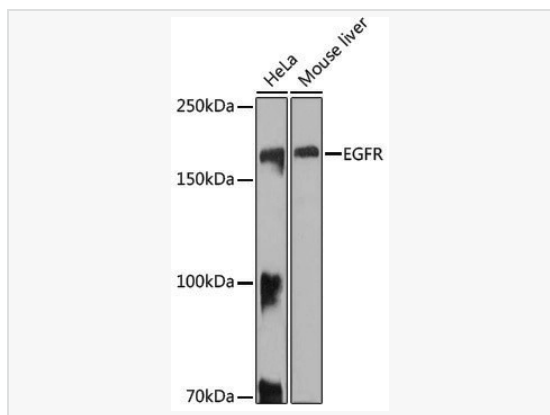
Catalog # P104636

### Product Information

Application	WB, IP, ELISA
Reactivity	Human, Mouse, Rat
Dilution	WB 1:500~1:1,000; IP 0.5µg-4µg antibody for 400µg-800µg extracts of whole cells
Host	Rabbit
Clonality	Polyclonal
Isotype	IgG
Label	Unconjugated
Immunogen	A synthetic peptide corresponding to a sequence within amino acids 1100-1200 of human EGFR (NP_005219.2).
Format	Affinity purified polyclonal antibody supplied in PBS with 0.02% sodium azide and 50% glycerol, pH 7.3.
Storage	Shipped on wet ice. Store at -20°C. Stable for 24 months from date of receipt. Aliquoting is unnecessary for -20°C storage.
Precautions	Anti-EGFR Rabbit pAb is for research use only and not for use in diagnostic or therapeutic procedures.

### Protein Information

Synonyms	ERBB; ERRP; HER1; mENA; ERBB1; PIG61; NISBD2; EGFR.
Calculated MW	Calculated MW: 134 kDa; Observed MW: 175 kDa/175 kDa/175 kDa
Uniprot ID	P00533
Gene ID	1956
Background	The protein encoded by this gene is a transmembrane glycoprotein that is a member of the protein kinase superfamily. This protein is a receptor for members of the epidermal growth factor family. EGFR is a cell surface protein that binds to epidermal growth factor, thus inducing receptor dimerization and tyrosine autophosphorylation leading to cell proliferation. Mutations in this gene are associated with lung cancer. EGFR is a component of the cytokine storm which contributes to a severe form of Coronavirus Disease 2019 (COVID-19) resulting from infection with severe acute respiratory syndrome coronavirus-2 (SARS-CoV-2).



Western blot analysis of various lysates using EGFR Rabbit pAb (P104636) at 1:1,000 dilution.

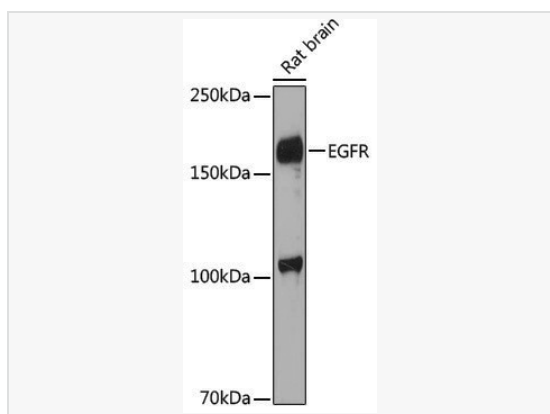
Secondary antibody: HRP-conjugated Goat anti-Rabbit IgG (H+L) (LF102) at 1:10,000 dilution.

Lysates/proteins: 25µg per lane.

Blocking buffer: 3% nonfat dry milk in TBST.

Detection: ECL Kit.

Exposure time: 10s.



Western blot analysis of lysates from Rat brain, using EGFR Rabbit pAb (P104636) at 1:1,000 dilution.

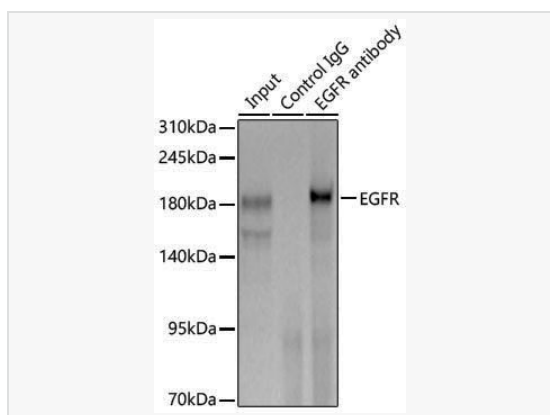
Secondary antibody: HRP-conjugated Goat anti-Rabbit IgG (H+L) (LF102) at 1:10,000 dilution.

Lysates/proteins: 25µg per lane.

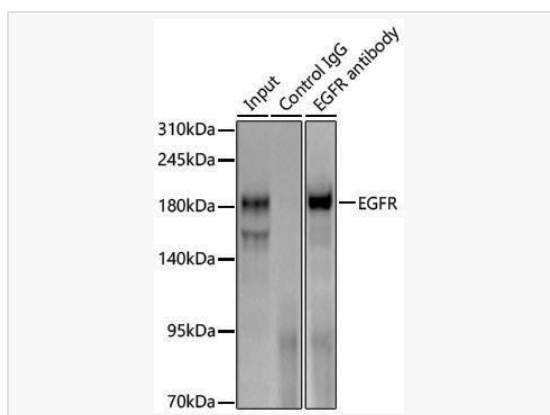
Blocking buffer: 3% nonfat dry milk in TBST.

Detection: ECL Enhanced Kit.

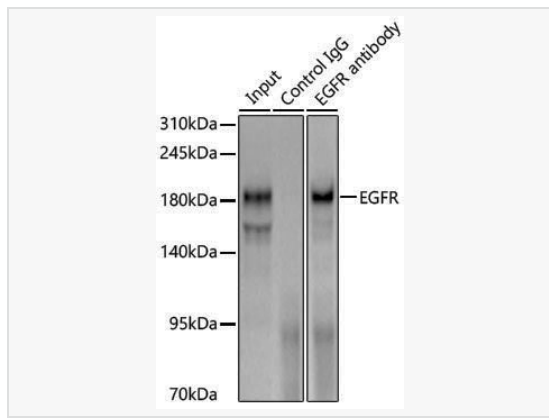
Exposure time: 180s.



Immunoprecipitation of EGFR from 600 µg extracts of Rat liver tissue was performed using 3 µg of EGFR Rabbit pAb (P104636). Rabbit IgG isotype control was used to precipitate the Control IgG sample. IP samples were eluted with 1X Laemmli Buffer. The Input lane represents 10% of the total input. Western blot analysis of immunoprecipitates was conducted using EGFR Rabbit pAb (P104636) at a dilution of 1:1000.



Immunoprecipitation of EGFR from 600 µg extracts of Rat liver tissue was performed using 3 µg of EGFR Rabbit pAb (P104636). Rabbit IgG isotype control was used to precipitate the Control IgG sample. IP samples were eluted with 1X Laemmli Buffer. The Input lane represents 10% of the total input. Western blot analysis of immunoprecipitates was conducted using EGFR Rabbit pAb (P104636) at a dilution of 1:1000.



Immunoprecipitation of EGFR from 600  $\mu\text{g}$  extracts of Rat liver tissue was performed using 3  $\mu\text{g}$  of EGFR Rabbit pAb (P104636). Rabbit IgG isotype control was used to precipitate the Control IgG sample. IP samples were eluted with 1X Laemmli Buffer. The Input lane represents 10% of the total input. Western blot analysis of immunoprecipitates was conducted using EGFR Rabbit pAb (P104636) at a dilution of 1:1000.