

## Anti-BCAR1 Rabbit pAb

Purified Rabbit Polyclonal Antibody

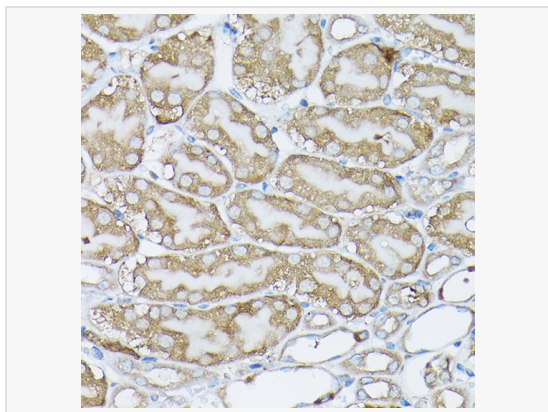
Catalog # P104258

### Product Information

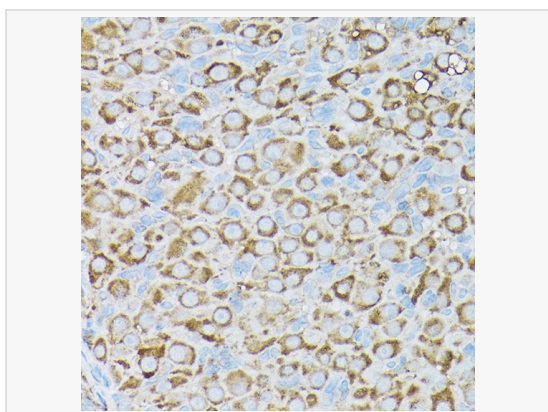
Application	WB, IHC-P/IF (Tissue-P), IF (Cell)/ICC, ELISA
Reactivity	Human, Mouse, Rat
Dilution	WB 1:100~1:500; IHC-P 1:50~1:200; IF 1:50~1:200
Host	Rabbit
Clonality	Polyclonal
Isotype	IgG
Label	Unconjugated
Immunogen	Recombinant fusion protein containing a sequence corresponding to amino acids 495-612 of human BCAR1 (NP_055382.2).
Format	Affinity purified polyclonal antibody supplied in PBS with 0.02% sodium azide and 50% glycerol, pH 7.3.
Storage	Shipped on wet ice. Store at -20°C. Stable for 24 months from date of receipt. Aliquoting is unnecessary for -20°C storage.
Precautions	Anti-BCAR1 Rabbit pAb is for research use only and not for use in diagnostic or therapeutic procedures.

### Protein Information

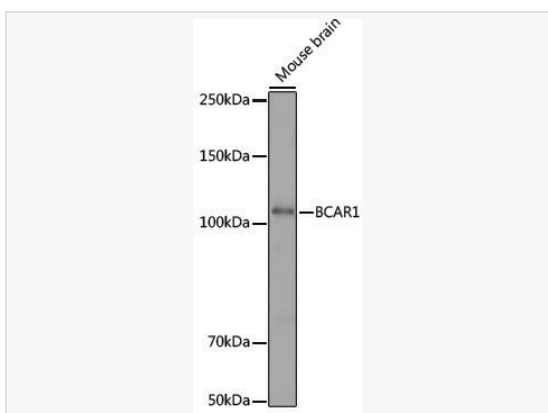
Synonyms	CAS; CAS1; CASS1; CRKAS; P130Cas; BCAR1.
Calculated MW	Calculated MW: 93 kDa; Observed MW: 130 kDa
Uniprot ID	P56945
Gene ID	9564
Background	The protein encoded by this gene is a member of the Crk-associated substrate (CAS) family of scaffold proteins, characterized by the presence of multiple protein-protein interaction domains and many serine and tyrosine phosphorylation sites. The encoded protein contains a Src-homology 3 (SH3) domain, a proline-rich domain, a substrate domain which contains 15 repeat of the YxxP consensus phosphorylation motif for Src family kinases, a serine-rich domain, and a bipartite Src-binding domain, which can bind both SH2 and SH3 domains. This adaptor protein functions in multiple cellular pathways, including in cell motility, apoptosis and cell cycle control. Dysregulation of this gene can have a wide range of effects, affecting different pathways, including cardiac development, vascular smooth muscle cells, liver and kidney function, endothelial migration, and cancer.



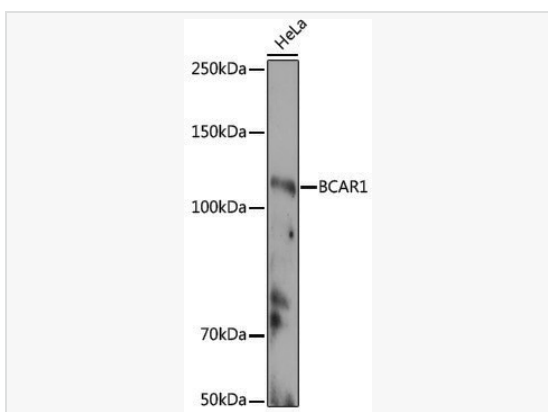
Immunohistochemistry analysis of paraffin-embedded Mouse kidney using BCAR1 Rabbit pAb (P104258) at dilution of 1:50 (40× lens). High pressure antigen retrieval performed with 0.01M Citrate Bufferr (pH 6.0) prior to IHC staining.



Immunohistochemistry analysis of paraffin-embedded Rat ovary using BCAR1 Rabbit pAb (P104258) at dilution of 1:50 (40× lens). High pressure antigen retrieval performed with 0.01M Citrate Bufferr (pH 6.0) prior to IHC staining.



Western blot analysis of lysates from Mouse brain, using BCAR1 Rabbit pAb (P104258) at 1:500 dilution.  
Secondary antibody: HRP-conjugated Goat anti-Rabbit IgG (H+L) (LF102) at 1:10,000 dilution.  
Lysates/proteins: 25µg per lane.  
Blocking buffer: 3% nonfat dry milk in TBST.  
Detection: ECL Kit.  
Exposure time: 90s.



Western blot analysis of lysates from HeLa cells, using BCAR1 Rabbit pAb (P104258) at 1:500 dilution.  
Secondary antibody: HRP-conjugated Goat anti-Rabbit IgG (H+L) (LF102) at 1:10,000 dilution.  
Lysates/proteins: 25µg per lane.  
Blocking buffer: 3% nonfat dry milk in TBST.  
Detection: ECL Enhanced Kit.  
Exposure time: 180s.