

## Anti-BUBR1 Rabbit pAb

Purified Rabbit Polyclonal Antibody

Catalog # P103786

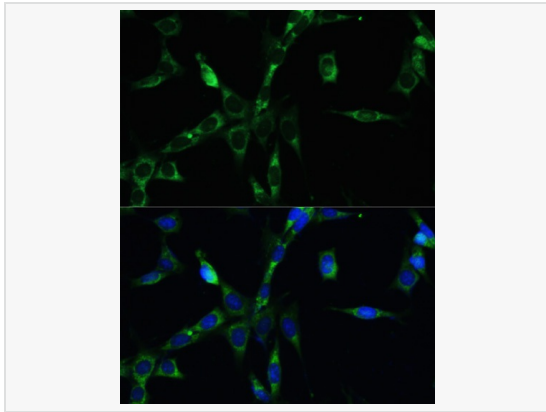
### Product Information

Application	WB, IF (Cell)/ICC, ELISA
Reactivity	Human, Mouse, Rat
Dilution	WB 1:500~1:2,000; IF 1:50~1:200
Host	Rabbit
Clonality	Polyclonal
Isotype	IgG
Label	Unconjugated
Immunogen	Recombinant fusion protein containing a sequence corresponding to amino acids 1-260 of human BUB1B (NP_001202.4).
Format	Affinity purified polyclonal antibody supplied in PBS with 0.02% sodium azide and 50% glycerol, pH 7.3.
Storage	Shipped on wet ice. Store at -20°C. Stable for 24 months from date of receipt. Aliquoting is unnecessary for -20°C storage.
Precautions	Anti-BUBR1 Rabbit pAb is for research use only and not for use in diagnostic or therapeutic procedures.

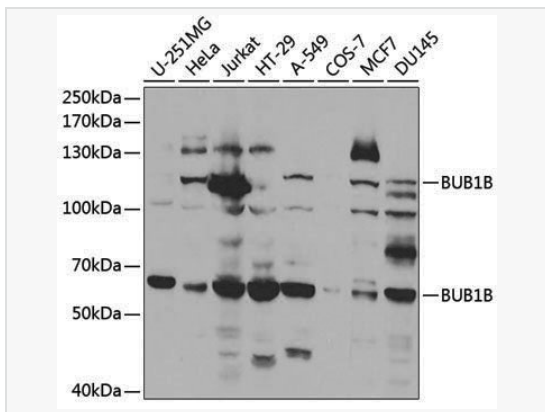
### Protein Information

Synonyms	MVA1; SSK1; BUBR1; Bub1A; MAD3L; hBUBR1; BUB1beta; BUB1B.
Calculated MW	Calculated MW: 120 kDa; Observed MW: 55 kDa/120 kDa
Uniprot ID	O60566
Gene ID	701
Background	This gene encodes a kinase involved in spindle checkpoint function. The protein has been localized to the kinetochore and plays a role in the inhibition of the anaphase-promoting complex/cyclosome (APC/C), delaying the onset of anaphase and ensuring proper chromosome segregation. Impaired spindle checkpoint function has been found in many forms of cancer.

## Validation Images



Immunofluorescence analysis of NIH-3T3 cells using BUB1B Rabbit pAb (P103786) at dilution of 1:100. Secondary antibody: Cy3-conjugated Goat anti-Rabbit IgG (H+L) at 1:500 dilution. Blue: DAPI for nuclear staining.



Western blot analysis of various lysates using BUB1B Rabbit pAb (P103786) at 1:1,000 dilution.

Secondary antibody: HRP-conjugated Goat anti-Rabbit IgG (H+L) (LF102) at 1:10,000 dilution.

Lysates/proteins: 25 $\mu$ g per lane.

Blocking buffer: 3% nonfat dry milk in TBST.