

## Anti-Smad3 Rabbit pAb

Purified Rabbit Polyclonal Antibody

Catalog # P103701

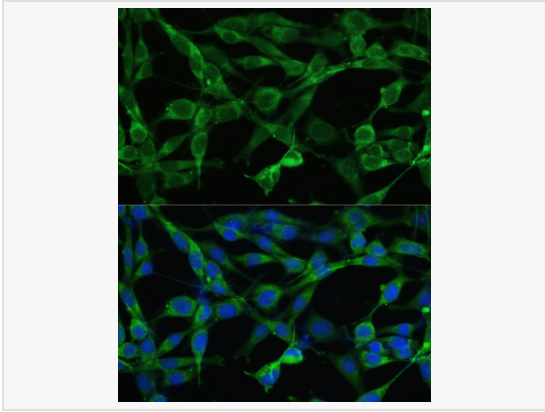
### Product Information

Application	WB, IF (Cell)/ICC, ELISA
Reactivity	Human, Mouse, Rat
Dilution	WB 1:500~1:1,000; IF 1:50~1:200
Host	Rabbit
Clonality	Polyclonal
Isotype	IgG
Label	Unconjugated
Immunogen	Recombinant fusion protein containing a sequence corresponding to amino acids 150-250 of human Smad3 (NP_005893.1).
Format	Affinity purified polyclonal antibody supplied in PBS with 0.02% sodium azide and 50% glycerol, pH 7.3.
Storage	Shipped on wet ice. Store at -20°C. Stable for 24 months from date of receipt. Aliquoting is unnecessary for -20°C storage.
Precautions	Anti-Smad3 Rabbit pAb is for research use only and not for use in diagnostic or therapeutic procedures.

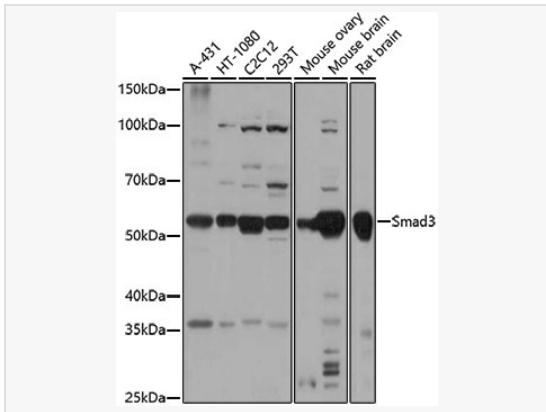
### Protein Information

Synonyms	LDS3; mad3; LDS1C; MADH3; JV15-2; hMAD-3; hSMAD3; HSPC193; HsT17436; Smad3.
Calculated MW	Calculated MW: 48 kDa; Observed MW: 52 kDa
Uniprot ID	P84022
Gene ID	4088
Background	The SMAD family of proteins are a group of intracellular signal transducer proteins similar to the gene products of the <i>Drosophila</i> gene 'mothers against decapentaplegic' (Mad) and the <i>C. elegans</i> gene Sma. The SMAD3 protein functions in the transforming growth factor-beta signaling pathway, and transmits signals from the cell surface to the nucleus, regulating gene activity and cell proliferation. This protein forms a complex with other SMAD proteins and binds DNA, functioning both as a transcription factor and tumor suppressor. Mutations in this gene are associated with aneurysms-osteoarthritis syndrome and Loey's-Dietz Syndrome 3.

## Validation Images



Immunofluorescence analysis of NIH/3T3 cells using Smad3 Rabbit pAb (P103701) at dilution of 1:100. Blue: DAPI for nuclear staining.



Western blot analysis of various lysates using (P103701) at 1:1,000 dilution.

Secondary antibody: HRP-conjugated Goat anti-Rabbit IgG (H+L) (LF102) at 1:10,000 dilution.

Lysates/proteins: 25 $\mu$ g per lane.

Blocking buffer: 3% nonfat dry milk in TBST.

Detection: ECL Kit.

Exposure time: 30s.