

[KD Validated] Anti-DIAPH1 Rabbit pAb

Purified Rabbit Polyclonal Antibody

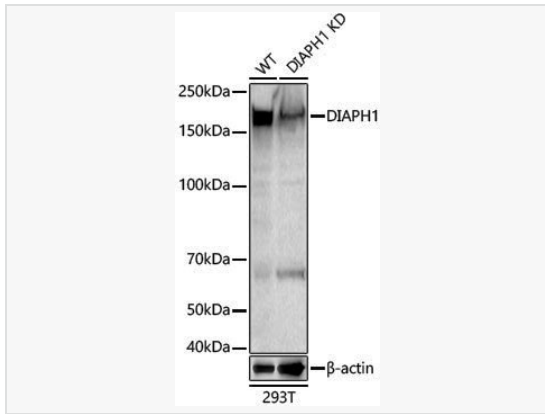
Catalog # P103689

Product Information

Application	WB, ELISA
Reactivity	Human
Dilution	WB 1:500~1:2,000
Host	Rabbit
Clonality	Polyclonal
Isotype	IgG
Label	Unconjugated
Immunogen	Recombinant fusion protein containing a sequence corresponding to amino acids 1158-1272 of human DIAPH1 (NP_005210.3).
Format	Affinity purified polyclonal antibody supplied in PBS with 0.02% sodium azide and 50% glycerol, pH 7.3.
Storage	Shipped on wet ice. Store at -20°C. Stable for 24 months from date of receipt. Aliquoting is unnecessary for -20°C storage.
Precautions	Anti-DIAPH1 Rabbit pAb is for research use only and not for use in diagnostic or therapeutic procedures.

Protein Information

Synonyms	DIA1; DRF1; DFNA1; LFHL1; SCBMS; hDIA1; mDia1; [KD Validated] DIAPH1.
Calculated MW	Calculated MW: 141 kDa; Observed MW: 150 kDa
Uniprot ID	O60610
Gene ID	1729
Background	This gene is a homolog of the <i>Drosophila</i> diaphanous gene, and has been linked to autosomal dominant, fully penetrant, nonsyndromic sensorineural progressive low-frequency hearing loss. Actin polymerization involves proteins known to interact with diaphanous protein in <i>Drosophila</i> and mouse. It has therefore been speculated that this gene may have a role in the regulation of actin polymerization in hair cells of the inner ear. Alternatively spliced transcript variants encoding distinct isoforms have been found for this gene.



Western blot analysis of lysates from wild type (WT) and DIAPH1 knockdown (KD) 293T cells, using [KD Validated] DIAPH1 Rabbit pAb (P103689) at 1:600 dilution. Secondary antibody: HRP-conjugated Goat anti-Rabbit IgG (H+L) (LF102) at 1:10,000 dilution.

Lysates/proteins: 25µg per lane.

Blocking buffer: 3% nonfat dry milk in TBST.

Detection: ECL Kit.

Exposure time: 1s.