

Anti-4E-BP1 Rabbit pAb

Purified Rabbit Polyclonal Antibody

Catalog # P103594

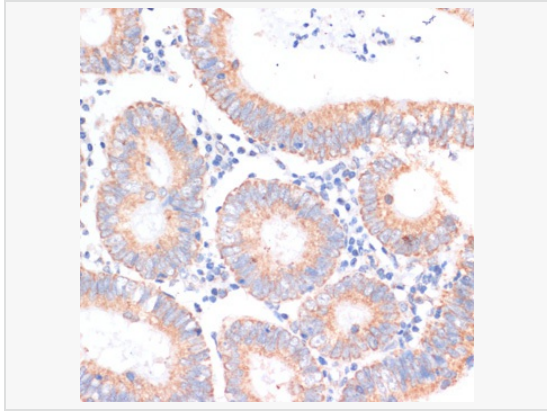
Product Information

| | |
|-------------|---|
| Application | IHC-P/IF (Tissue-P), ELISA |
| Reactivity | Human, Mouse, Rat |
| Dilution | IHC-P 1:50~1:200 |
| Host | Rabbit |
| Clonality | Polyclonal |
| Isotype | IgG |
| Label | Unconjugated |
| Immunogen | Recombinant fusion protein containing a sequence corresponding to amino acids 1-118 of human eIF4EBP1 (NP_004086.1). |
| Format | Affinity purified polyclonal antibody supplied in PBS with 0.02% sodium azide and 50% glycerol, pH 7.3. |
| Storage | Shipped on wet ice. Store at -20°C. Stable for 24 months from date of receipt. Aliquoting is unnecessary for -20°C storage. |
| Precautions | Anti-4E-BP1 Rabbit pAb is for research use only and not for use in diagnostic or therapeutic procedures. |

Protein Information

| | |
|---------------|--|
| Synonyms | BP-1; 4EBP1; 4E-BP1; PHAS-I; eIF4EBP1. |
| Calculated MW | Calculated MW: 13 kDa |
| Uniprot ID | Q13541 |
| Gene ID | 1978 |
| Background | This gene encodes one member of a family of translation repressor proteins. The protein directly interacts with eukaryotic translation initiation factor 4E (eIF4E), which is a limiting component of the multisubunit complex that recruits 40S ribosomal subunits to the 5' end of mRNAs. Interaction of this protein with eIF4E inhibits complex assembly and represses translation. This protein is phosphorylated in response to various signals including UV irradiation and insulin signaling, resulting in its dissociation from eIF4E and activation of mRNA translation. |

Validation Images



Immunohistochemistry analysis of paraffin-embedded Human colon carcinoma using eIF4EBP1 Rabbit pAb (P103594) at dilution of 1:100 (40× lens). Microwave antigen retrieval performed with 0.01M PBS Buffer (pH 7.2) prior to IHC staining.