

Anti-Dishevelled 2 Rabbit pAb

Purified Rabbit Polyclonal Antibody

Catalog # P102525

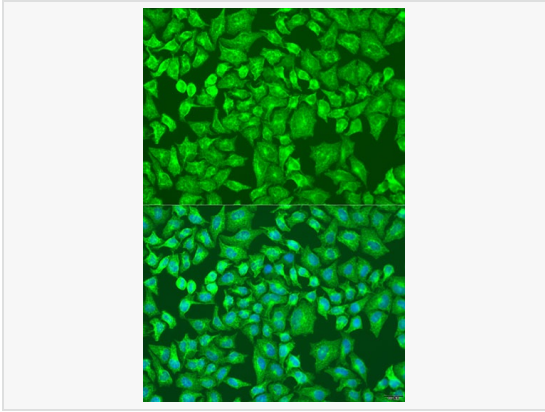
Product Information

Application	IF (Cell)/ICC, ELISA
Reactivity	Human
Dilution	IF 1:50~1:200
Host	Rabbit
Clonality	Polyclonal
Isotype	IgG
Label	Unconjugated
Immunogen	Recombinant fusion protein containing a sequence corresponding to amino acids 1-240 of human DVL2 (NP_004413.1).
Format	Affinity purified polyclonal antibody supplied in PBS with 0.02% sodium azide and 50% glycerol, pH 7.3.
Storage	Shipped on wet ice. Store at -20°C. Stable for 24 months from date of receipt. Aliquoting is unnecessary for -20°C storage.
Precautions	Anti-Dishevelled 2 Rabbit pAb is for research use only and not for use in diagnostic or therapeutic procedures.

Protein Information

Synonyms	DVL2.
Calculated MW	Calculated MW: 79 kDa
Uniprot ID	O14641
Gene ID	1856
Background	This gene encodes a member of the dishevelled (dsh) protein family. The vertebrate dsh proteins have approximately 40% amino acid sequence similarity with <i>Drosophila</i> dsh. This gene encodes a 90-kD protein that undergoes posttranslational phosphorylation to form a 95-kD cytoplasmic protein, which may play a role in the signal transduction pathway mediated by multiple Wnt proteins. The mechanisms of dishevelled function in Wnt signaling are likely to be conserved among metazoans.

Validation Images



Immunofluorescence analysis of U2OS cells using DVL2 Rabbit pAb (P102525) at dilution of 1:100. Secondary antibody: Cy3-conjugated Goat anti-Rabbit IgG (H+L) at 1:500 dilution. Blue: DAPI for nuclear staining.