

Anti-ZAK Rabbit pAb

Purified Rabbit Polyclonal Antibody

Catalog # P102282

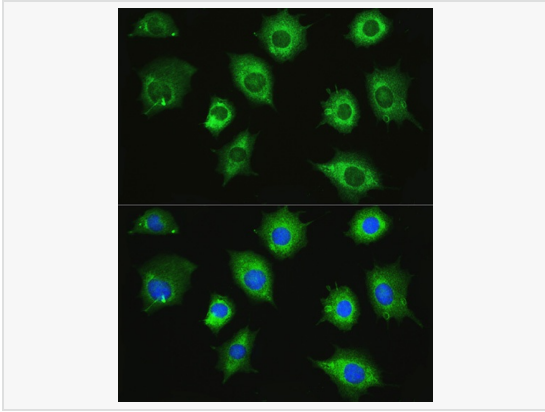
Product Information

Application	WB, IF (Cell)/ICC, ELISA
Reactivity	Mouse, Rat
Dilution	WB 1:500~1:2,000; IF 1:50~1:200
Host	Rabbit
Clonality	Polyclonal
Isotype	IgG
Label	Unconjugated
Immunogen	Recombinant fusion protein containing a sequence corresponding to amino acids 100-312 of human ZAK (NP_598407.1).
Format	Affinity purified polyclonal antibody supplied in PBS with 0.02% sodium azide and 50% glycerol, pH 7.3.
Storage	Shipped on wet ice. Store at -20°C. Stable for 24 months from date of receipt. Aliquoting is unnecessary for -20°C storage.
Precautions	Anti-ZAK Rabbit pAb is for research use only and not for use in diagnostic or therapeutic procedures.

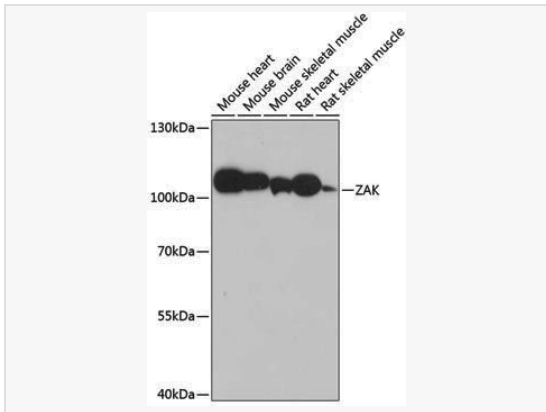
Protein Information

Synonyms	pk; AZK; MLT; MRK; ZAK; CNM6; MLK7; MLTK; SFMMP; mklak; MLTKbeta; MLTKalpha.
Calculated MW	Calculated MW: 35 kDa/51 kDa/91 kDa; Observed MW: 105 kDa
Gene ID	51776
Background	This gene is a member of the MAPKKK family of signal transduction molecules and encodes a protein with an N-terminal kinase catalytic domain, followed by a leucine zipper motif and a sterile-alpha motif (SAM). This magnesium-binding protein forms homodimers and is located in the cytoplasm. The protein mediates gamma radiation signaling leading to cell cycle arrest and activity of this protein plays a role in cell cycle checkpoint regulation in cells. The protein also has pro-apoptotic activity. Alternate transcriptional splice variants, encoding different isoforms, have been characterized.

Validation Images



Immunofluorescence analysis of L929 cells using ZAK Rabbit pAb (P102282) at dilution of 1:100. Secondary antibody: Cy3-conjugated Goat anti-Rabbit IgG (H+L) at 1:500 dilution. Blue: DAPI for nuclear staining.



Western blot analysis of various lysates using ZAK Rabbit pAb (P102282) at 1:3,000 dilution.
Secondary antibody: HRP-conjugated Goat anti-Rabbit IgG (H+L) (LF102) at 1:10,000 dilution.
Lysates/proteins: 25 μ g per lane.
Blocking buffer: 3% nonfat dry milk in TBST.
Detection: ECL Kit.
Exposure time: 90s.