

Anti-Angiotensin II Type 1 Receptor Rabbit pAb

Purified Rabbit Polyclonal Antibody

Catalog # P101989

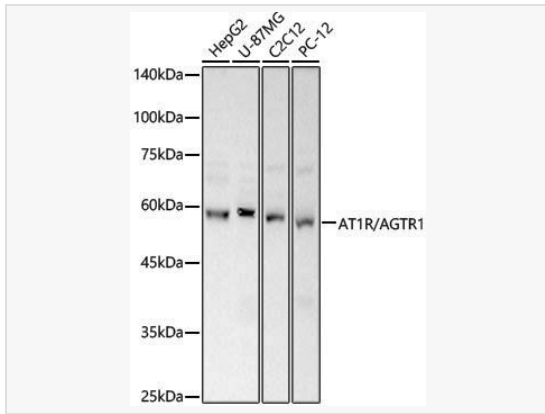
Product Information

Application	WB, ELISA
Reactivity	Human, Mouse, Rat
Dilution	WB 1:500~1:1,000
Host	Rabbit
Clonality	Polyclonal
Isotype	IgG
Label	Unconjugated
Immunogen	Recombinant fusion protein containing a sequence corresponding to amino acids 294-388 of human AT1R/AGTR1 (NP_114438.2).
Format	Affinity purified polyclonal antibody supplied in PBS with 0.02% sodium azide and 50% glycerol, pH 7.3.
Storage	Shipped on wet ice. Store at -20°C. Stable for 24 months from date of receipt. Aliquoting is unnecessary for -20°C storage.
Precautions	Anti-Angiotensin II Type 1 Receptor Rabbit pAb is for research use only and not for use in diagnostic or therapeutic procedures.

Protein Information

Synonyms	AT1; AG2S; AT1B; AT1R; ATR1; AT1AR; AT1BR; AT2R1; HAT1R; AGTR1B; AT1R/AGTR1.
Calculated MW	Calculated MW: 41 kDa; Observed MW: 62 kDa
Uniprot ID	P30556
Gene ID	185
Background	Angiotensin II is a potent vasopressor hormone and a primary regulator of aldosterone secretion. It is an important effector controlling blood pressure and volume in the cardiovascular system. It acts through at least two types of receptors. This gene encodes the type 1 receptor which is thought to mediate the major cardiovascular effects of angiotensin II. This gene may play a role in the generation of reperfusion arrhythmias following restoration of blood flow to ischemic or infarcted myocardium. It was previously thought that a related gene, denoted as AGTR1B, existed; however, it is now believed that there is only one type 1 receptor gene in humans. Alternative splicing of this gene results in multiple transcript variants.

Validation Images



Western blot analysis of various lysates, using AT1R/AGTR1 Rabbit pAb (P101989) at 1:1500 dilution.

Secondary antibody: HRP-conjugated Goat anti-Rabbit IgG (H+L) (LF102) at 1:10,000 dilution.

Lysates/proteins: 25 μ g per lane.

Blocking buffer: 3% nonfat dry milk in TBST.

Detection: ECL Kit.

Exposure time: 10s.