

## [KO Validated] Anti-MEK1 Rabbit pAb

Purified Rabbit Polyclonal Antibody

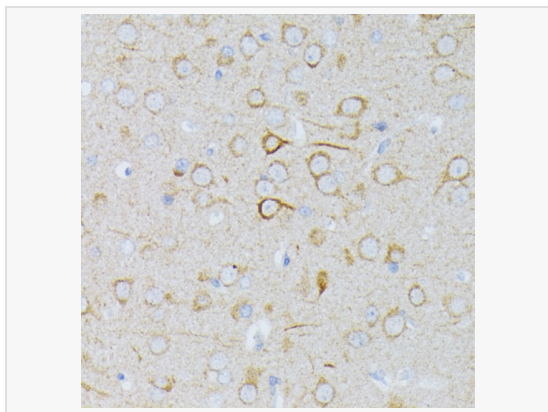
Catalog # P101265

### Product Information

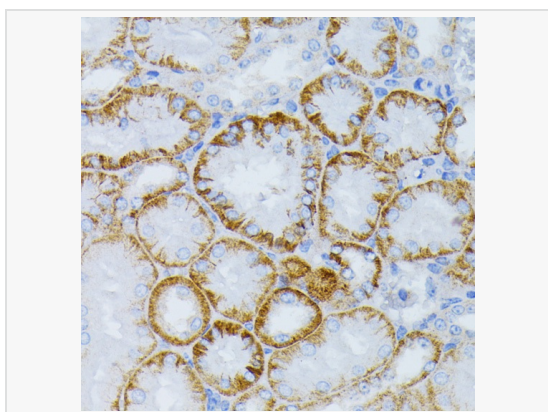
Application	WB, IHC-P/IF (Tissue-P), ELISA
Reactivity	Human, Mouse, Rat
Dilution	WB 1:1,000~1:3,000; IHC-P 1:50~1:200
Host	Rabbit
Clonality	Polyclonal
Isotype	IgG
Label	Unconjugated
Immunogen	A synthetic peptide corresponding to a sequence within amino acids 1-100 of human MEK1 (NP_002746.1).
Format	Affinity purified polyclonal antibody supplied in PBS with 0.02% sodium azide and 50% glycerol, pH 7.3.
Storage	Shipped on wet ice. Store at -20°C. Stable for 24 months from date of receipt. Aliquoting is unnecessary for -20°C storage.
Precautions	Anti-MEK1 Rabbit pAb is for research use only and not for use in diagnostic or therapeutic procedures.

### Protein Information

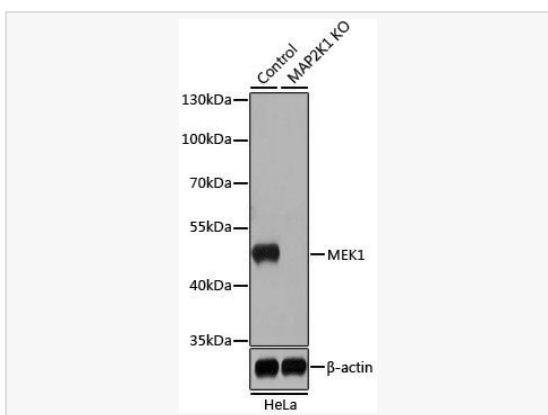
Synonyms	MEL; CFC3; MEK1; MKK1; MAPKK1; PRKMK1; K1.
Calculated MW	Calculated MW: 43 kDa; Observed MW: 45 kDa
Uniprot ID	Q02750
Gene ID	5604
Background	The protein encoded by this gene is a member of the dual specificity protein kinase family, which acts as a mitogen-activated protein (MAP) kinase kinase. MAP kinases, also known as extracellular signal-regulated kinases (ERKs), act as an integration point for multiple biochemical signals. This protein kinase lies upstream of MAP kinases and stimulates the enzymatic activity of MAP kinases upon wide variety of extra- and intracellular signals. As an essential component of MAP kinase signal transduction pathway, this kinase is involved in many cellular processes such as proliferation, differentiation, transcription regulation and development.



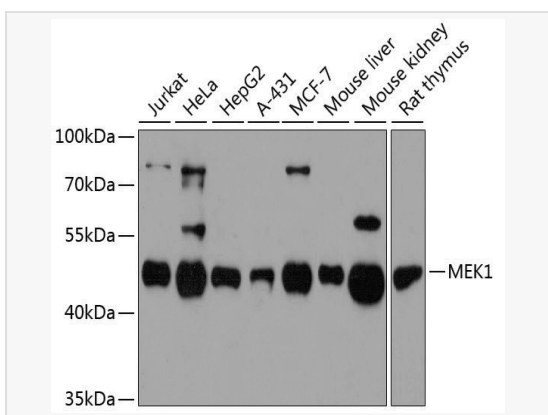
Immunohistochemistry analysis of paraffin-embedded Rat brain using [KO Validated] MEK1 Rabbit pAb (P101265) at dilution of 1:100 (40× lens). Microwave antigen retrieval performed with 0.01M PBS Buffer (pH 7.2) prior to IHC staining.



Immunohistochemistry analysis of paraffin-embedded Mouse kidney using [KO Validated] MEK1 Rabbit pAb (P101265) at dilution of 1:100 (40× lens). Microwave antigen retrieval performed with 0.01M PBS Buffer (pH 7.2) prior to IHC staining.



Western blot analysis of lysates from wild type (WT) and MEK1 knockout (KO) HeLa cells, using [KO Validated] MEK1 Rabbit pAb (P101265) at 1:1,000 dilution. Secondary antibody: HRP-conjugated Goat anti-Rabbit IgG (H+L) (LF102) at 1:10,000 dilution.  
 Lysates/proteins: 25µg per lane.  
 Blocking buffer: 3% nonfat dry milk in TBST.  
 Detection: ECL Kit.  
 Exposure time: 5s.



Western blot analysis of various lysates using [KO Validated] MEK1 Rabbit pAb (P101265) at 1:3,000 dilution. Secondary antibody: HRP-conjugated Goat anti-Rabbit IgG (H+L) (LF102) at 1:10,000 dilution.  
 Lysates/proteins: 25µg per lane.  
 Blocking buffer: 3% nonfat dry milk in TBST.  
 Detection: ECL Enhanced Kit.  
 Exposure time: 90s.