

Anti-STAT3 Rabbit pAb

Purified Rabbit Polyclonal Antibody

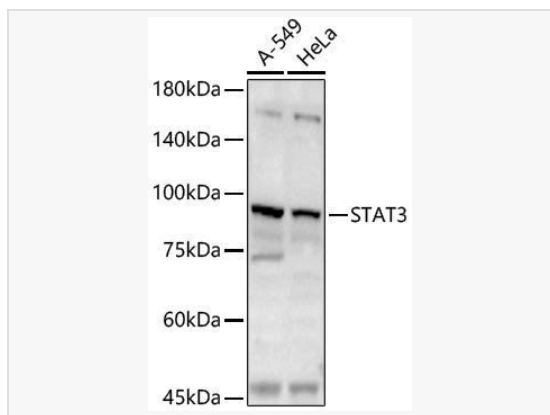
Catalog # P100938

Product Information

| | |
|-------------|---|
| Application | WB, IHC-P/IF (Tissue-P), IF (Cell)/ICC, ELISA |
| Reactivity | Human, Mouse, Rat |
| Dilution | WB 1:500~1:2,000; IHC-P 1:50~1:200; IF 1:50~1:200 |
| Host | Rabbit |
| Clonality | Polyclonal |
| Isotype | IgG |
| Label | Unconjugated |
| Immunogen | A synthetic peptide corresponding to a sequence within amino acids 600-700 of human STAT3 (NP_003141.2). |
| Format | Affinity purified polyclonal antibody supplied in PBS with 0.02% sodium azide and 50% glycerol, pH 7.3. |
| Storage | Shipped on wet ice. Store at -20°C. Stable for 24 months from date of receipt. Aliquoting is unnecessary for -20°C storage. |
| Precautions | Anti-STAT3 Rabbit pAb is for research use only and not for use in diagnostic or therapeutic procedures. |

Protein Information

| | |
|---------------|--|
| Synonyms | APRF; HIES; ADMIO; ADMIO1; STAT3. |
| Calculated MW | Calculated MW: 88 kDa; Observed MW: 86 kDa |
| Uniprot ID | P40763 |
| Gene ID | 6774 |
| Background | The protein encoded by this gene is a member of the STAT protein family. In response to cytokines and growth factors, STAT family members are phosphorylated by the receptor associated kinases, and then form homo- or heterodimers that translocate to the cell nucleus where they act as transcription activators. This protein is activated through phosphorylation in response to various cytokines and growth factors including IFNs, EGF, IL5, IL6, HGF, LIF and BMP2. This protein mediates the expression of a variety of genes in response to cell stimuli, and thus plays a key role in many cellular processes such as cell growth and apoptosis. The small GTPase Rac1 has been shown to bind and regulate the activity of this protein. PIAS3 protein is a specific inhibitor of this protein. This gene also plays a role in regulating host response to viral and bacterial infections. Mutations in this gene are associated with infantile-onset multisystem autoimmune disease and hyper-immunoglobulin E syndrome. |



Western blot analysis of various lysates, using STAT3 Rabbit pAb (P100938) at 1:2500 dilution.

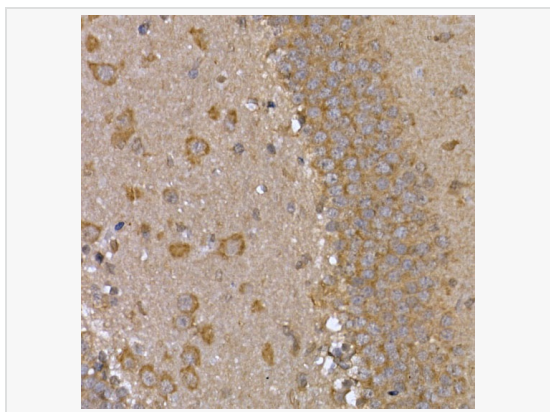
Secondary antibody: HRP-conjugated Goat anti-Rabbit IgG (H+L) (LF102) at 1:10,000 dilution.

Lysates/proteins: 25µg per lane.

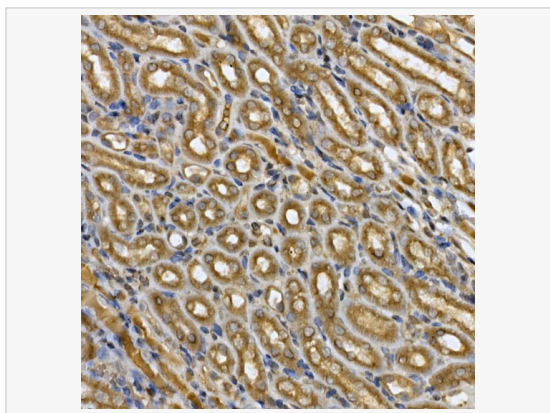
Blocking buffer: 3% nonfat dry milk in TBST.

Detection: ECL Kit.

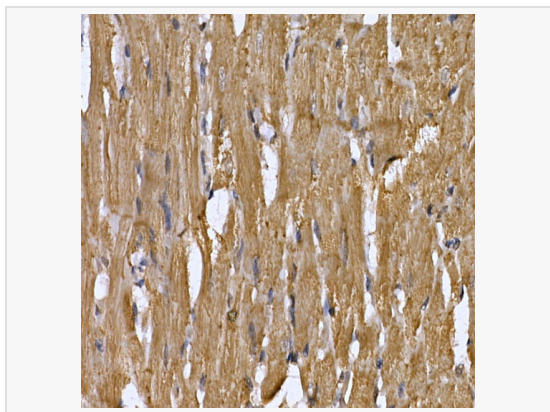
Exposure time: 60s.



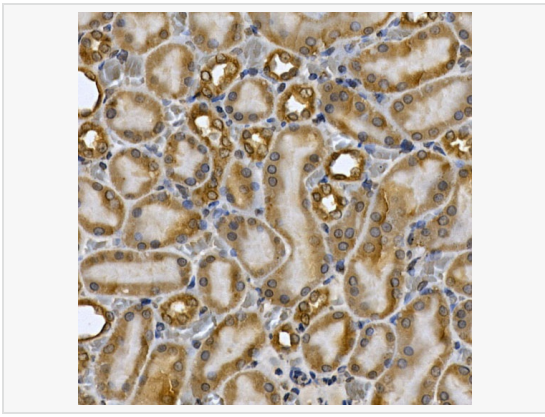
Immunohistochemistry analysis of paraffin-embedded Mouse brain using STAT3 Rabbit pAb (P100938) at dilution of 1:200 (40× lens). High pressure antigen retrieval performed with 0.01M Citrate Bufferr (pH 6.0) prior to IHC staining.



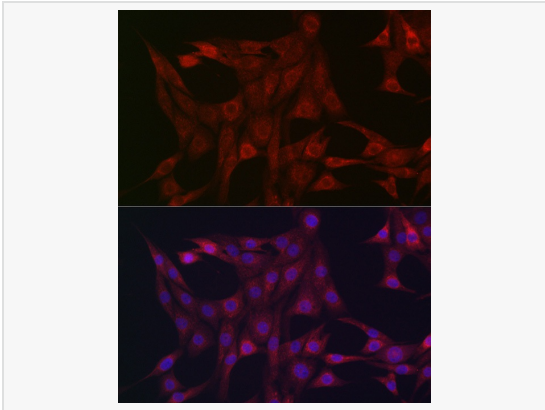
Immunohistochemistry analysis of paraffin-embedded Mouse kidney using STAT3 Rabbit pAb (P100938) at dilution of 1:200 (40× lens). High pressure antigen retrieval performed with 0.01M Citrate Bufferr (pH 6.0) prior to IHC staining.



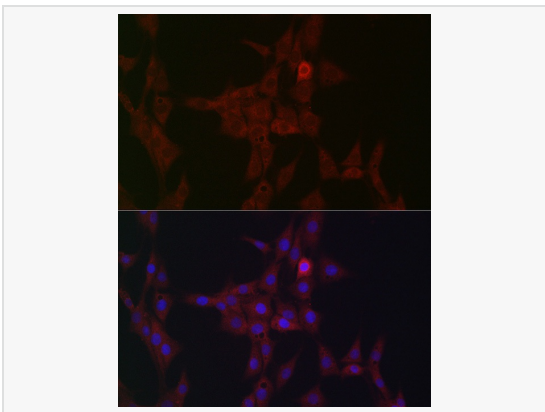
Immunohistochemistry analysis of paraffin-embedded Rat heart using STAT3 Rabbit pAb (P100938) at dilution of 1:200 (40× lens). High pressure antigen retrieval performed with 0.01M Citrate Bufferr (pH 6.0) prior to IHC staining.



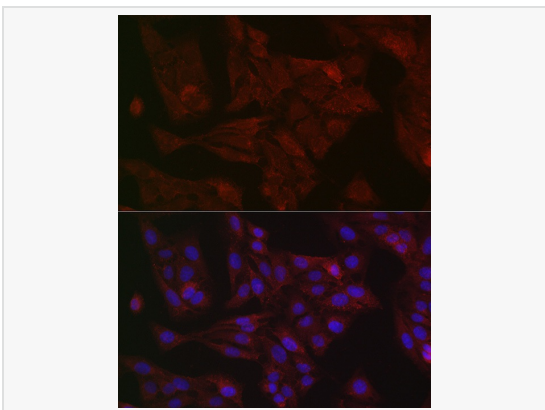
Immunohistochemistry analysis of paraffin-embedded Rat kidney using STAT3 Rabbit pAb (P100938) at dilution of 1:200 (40× lens). High pressure antigen retrieval performed with 0.01M Citrate Buffer (pH 6.0) prior to IHC staining.



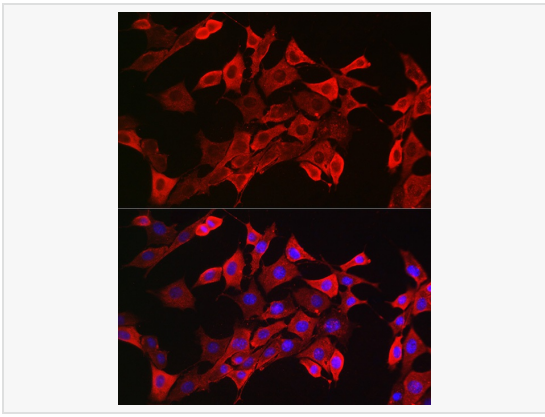
Immunofluorescence analysis of NIH/3T3 cells using STAT3 Rabbit pAb (P100938) at dilution of 1:100 (40× lens). Secondary antibody: Cy3-conjugated Goat anti-Rabbit IgG (H+L) at 1:500 dilution. Blue: DAPI for nuclear staining.



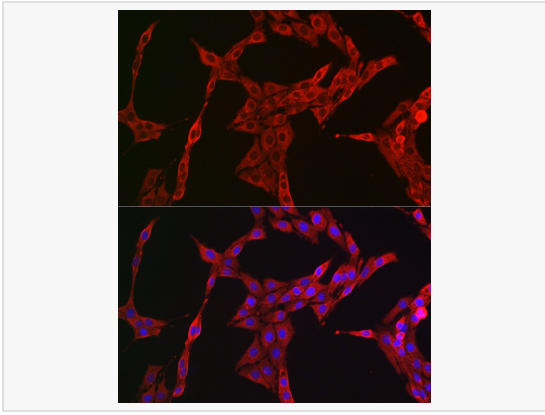
Immunofluorescence analysis of PC-12 cells using STAT3 Rabbit pAb (P100938) at dilution of 1:100 (40× lens). Secondary antibody: Cy3-conjugated Goat anti-Rabbit IgG (H+L) at 1:500 dilution. Blue: DAPI for nuclear staining.



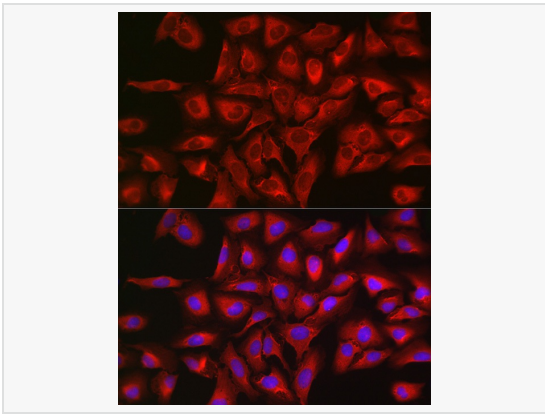
Immunofluorescence analysis of U2OS cells using STAT3 Rabbit pAb (P100938) at dilution of 1:100 (40× lens). Secondary antibody: Cy3-conjugated Goat anti-Rabbit IgG (H+L) at 1:500 dilution. Blue: DAPI for nuclear staining.



Immunofluorescence analysis of NIH/3T3 cells using STAT3 Rabbit pAb (P100938) at dilution of 1:200 (40× lens). Secondary antibody: Cy3-conjugated Goat anti-Rabbit IgG (H+L) at 1:500 dilution. Blue: DAPI for nuclear staining.



Immunofluorescence analysis of PC-12 cells using STAT3 Rabbit pAb (P100938) at dilution of 1:200 (40× lens). Secondary antibody: Cy3-conjugated Goat anti-Rabbit IgG (H+L) at 1:500 dilution. Blue: DAPI for nuclear staining.



Immunofluorescence analysis of U2OS cells using STAT3 Rabbit pAb (P100938) at dilution of 1:200 (40× lens). Secondary antibody: Cy3-conjugated Goat anti-Rabbit IgG (H+L) at 1:500 dilution. Blue: DAPI for nuclear staining.