

Anti-STAT1 Rabbit pAb

Purified Rabbit Polyclonal Antibody

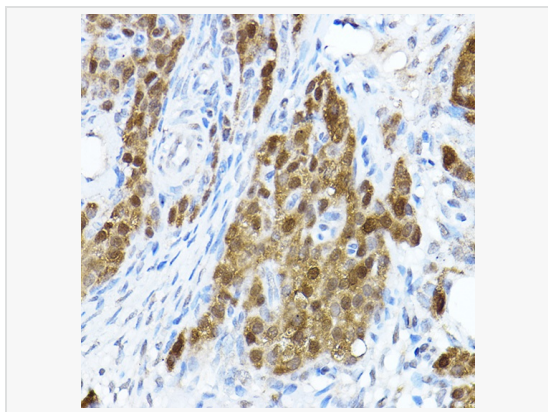
Catalog # P100915

Product Information

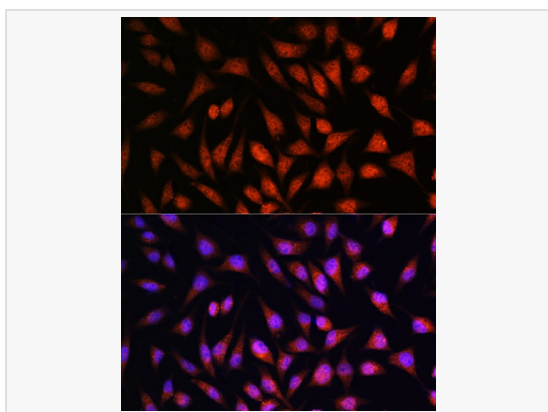
Application	WB, IHC-P/IF (Tissue-P), IF (Cell)/ICC, IP, ELISA
Reactivity	Human, Mouse, Rat
Dilution	WB 1:500~1:1,000; IHC-P 1:50~1:200; IF 1:50~1:200; IP 0.5μg-4μg antibody for 200μg-400μg extracts of whole cells
Host	Rabbit
Clonality	Polyclonal
Isotype	IgG
Label	Unconjugated
Immunogen	A synthetic peptide corresponding to a sequence within amino acids 650-750 of human STAT1 (NP_009330.1).
Format	Affinity purified polyclonal antibody supplied in PBS with 0.02% sodium azide and 50% glycerol, pH 7.3.
Storage	Shipped on wet ice. Store at -20°C. Stable for 24 months from date of receipt. Aliquoting is unnecessary for -20°C storage.
Precautions	Anti-STAT1 Rabbit pAb is for research use only and not for use in diagnostic or therapeutic procedures.

Protein Information

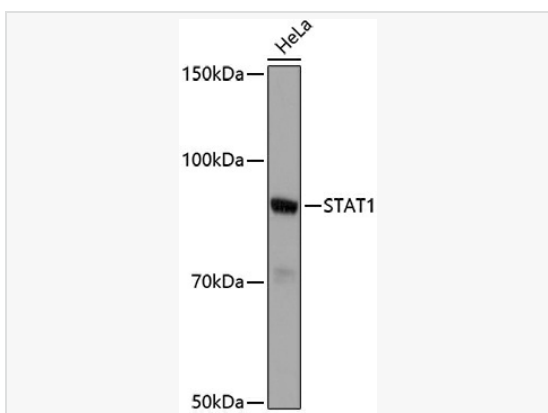
Synonyms	CANDF7; IMD31A; IMD31B; IMD31C; ISGF-3; STAT91; STAT1.
Calculated MW	Calculated MW: 87 kDa; Observed MW: 91 kDa
Uniprot ID	P42224
Gene ID	6772
Background	The protein encoded by this gene is a member of the STAT protein family. In response to cytokines and growth factors, STAT family members are phosphorylated by the receptor associated kinases, and then form homo- or heterodimers that translocate to the cell nucleus where they act as transcription activators. The protein encoded by this gene can be activated by various ligands including interferon-alpha, interferon-gamma, EGF, PDGF and IL6. This protein mediates the expression of a variety of genes, which is thought to be important for cell viability in response to different cell stimuli and pathogens. The protein plays an important role in immune responses to viral, fungal and mycobacterial pathogens. Mutations in this gene are associated with Immunodeficiency 31B, 31A, and 31C.



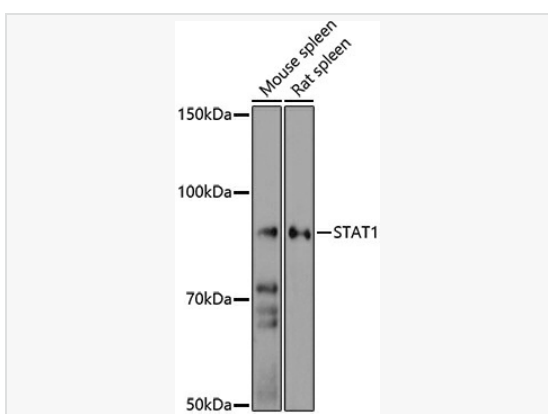
Immunohistochemistry analysis of paraffin-embedded Rat ovary using STAT1 Rabbit pAb (P100915) at dilution of 1:100 (40 \times lens). High pressure antigen retrieval performed with 0.01M Citrate Bufferr (pH 6.0) prior to IHC staining.



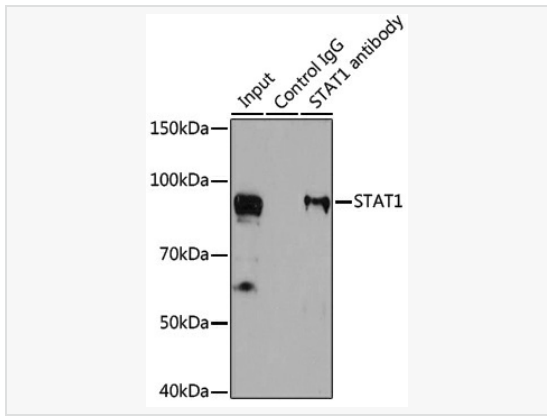
Immunofluorescence analysis of L929 cells using STAT1 Rabbit pAb (P100915) at dilution of 1:100. Secondary antibody: Cy3-conjugated Goat anti-Rabbit IgG (H+L) at 1:500 dilution. Blue: DAPI for nuclear staining.



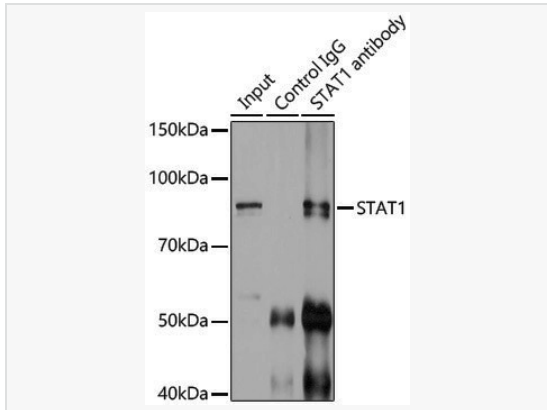
Western blot analysis of lysates from HeLa cells, using STAT1 Rabbit pAb (P100915) at 1:500 dilution.
Secondary antibody: HRP-conjugated Goat anti-Rabbit IgG (H+L) (LF102) at 1:10,000 dilution.
Lysates/proteins: 25 μ g per lane.
Blocking buffer: 3% nonfat dry milk in TBST.
Detection: ECL Kit.
Exposure time: 30s.



Western blot analysis of various lysates using STAT1 Rabbit pAb (P100915) at 1:500 dilution.
Secondary antibody: HRP-conjugated Goat anti-Rabbit IgG (H+L) (LF102) at 1:10,000 dilution.
Lysates/proteins: 25 μ g per lane.
Blocking buffer: 3% nonfat dry milk in TBST.
Detection: ECL Enhanced Kit.
Exposure time: 180s.



Immunoprecipitation analysis of 200 μg extracts of U-87MG cells using 3 μg STAT1 antibody (P100915). Western blot was performed from the immunoprecipitate using STAT1 antibody (P100915) at a dilution of 1:1000.



Immunoprecipitation analysis of 200 μg extracts of U-87MG cells using 3 μg STAT1 Rabbit pAb (P100915). Western blot was performed from the immunoprecipitate using STAT1 Rabbit pAb (P100915) at a dilution of 1:500.