

Anti-IKB alpha Rabbit pAb

Purified Rabbit Polyclonal Antibody

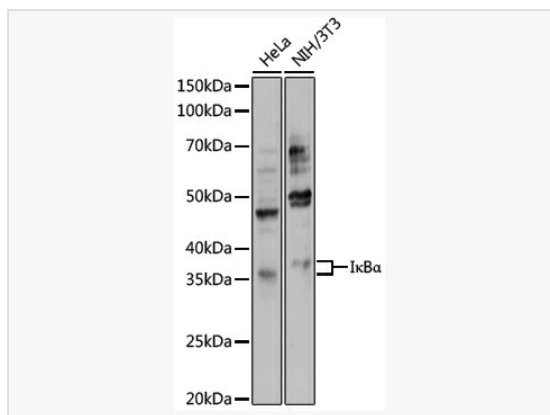
Catalog # P100832

Product Information

Application	WB, IP, ELISA
Reactivity	Human, Mouse, Rat
Dilution	WB 1:500~1:1,000; IP 1:20~1:50
Host	Rabbit
Clonality	Polyclonal
Isotype	IgG
Label	Unconjugated
Immunogen	Recombinant fusion protein containing a sequence corresponding to amino acids 201-300 of human IκBα (NP_065390.1).
Format	Affinity purified polyclonal antibody supplied in PBS with 0.02% sodium azide and 50% glycerol, pH 7.3.
Storage	Shipped on wet ice. Store at -20°C. Stable for 24 months from date of receipt. Aliquoting is unnecessary for -20°C storage.
Precautions	Anti-IKB alpha Rabbit pAb is for research use only and not for use in diagnostic or therapeutic procedures.

Protein Information

Synonyms	IKBA; MAD-3; NFKBI; EDAID2; IκBα.
Calculated MW	Calculated MW: 36 kDa; Observed MW: 36 kDa
Uniprot ID	P25963
Gene ID	4792
Background	This gene encodes a member of the NF-kappa-B inhibitor family, which contain multiple ankrin repeat domains. The encoded protein interacts with REL dimers to inhibit NF-kappa-B/REL complexes which are involved in inflammatory responses. The encoded protein moves between the cytoplasm and the nucleus via a nuclear localization signal and CRM1-mediated nuclear export. Mutations in this gene have been found in ectodermal dysplasia anhidrotic with T-cell immunodeficiency autosomal dominant disease.



Western blot analysis of various lysates using IκBα Rabbit pAb (P100832) at 1:1,000 dilution.

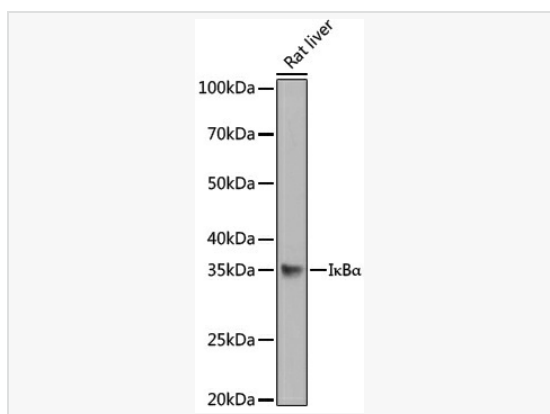
Secondary antibody: HRP-conjugated Goat anti-Rabbit IgG (H+L) (LF102) at 1:10,000 dilution.

Lysates/proteins: 25μg per lane.

Blocking buffer: 3% nonfat dry milk in TBST.

Detection: ECL Enhanced Kit.

Exposure time: 180s.



Western blot analysis of lysates from Rat liver, using IκBα Rabbit pAb (P100832) at 1:1,000 dilution.

Secondary antibody: HRP-conjugated Goat anti-Rabbit IgG (H+L) (LF102) at 1:10,000 dilution.

Lysates/proteins: 25μg per lane.

Blocking buffer: 3% nonfat dry milk in TBST.

Detection: ECL Kit.

Exposure time: 180s.