

Anti-EGFR Rabbit pAb

Purified Rabbit Polyclonal Antibody

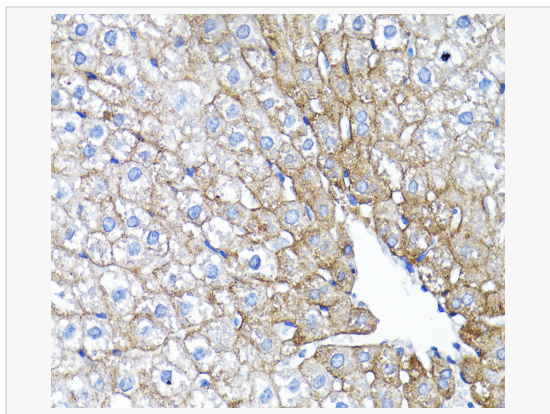
Catalog # P100824

Product Information

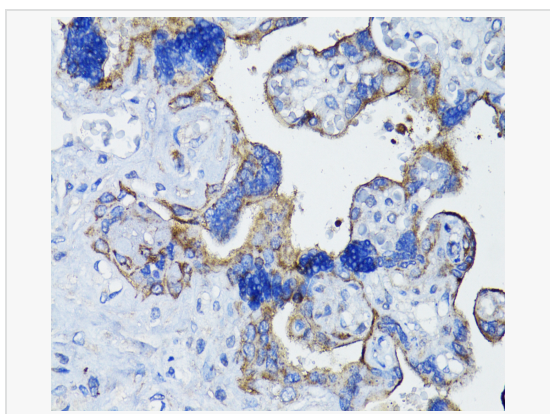
Application	WB, IHC-P/IF (Tissue-P), IF (Cell)/ICC, IP, ELISA
Reactivity	Human, Mouse, Rat
Dilution	WB 1:1,000~1:5,000; IHC-P 1:50~1:200; IF 1:100~1:500; IP 0.5µg-4µg antibody for 200µg-400µg extracts of whole cells
Host	Rabbit
Clonality	Polyclonal
Isotype	IgG
Label	Unconjugated
Immunogen	Recombinant fusion protein containing a sequence corresponding to amino acids 1021-1210 of human EGFR (NP_005219.2).
Format	Affinity purified polyclonal antibody supplied in PBS with 0.02% sodium azide and 50% glycerol, pH 7.3.
Storage	Shipped on wet ice. Store at -20°C. Stable for 24 months from date of receipt. Aliquoting is unnecessary for -20°C storage.
Precautions	Anti-EGFR Rabbit pAb is for research use only and not for use in diagnostic or therapeutic procedures.

Protein Information

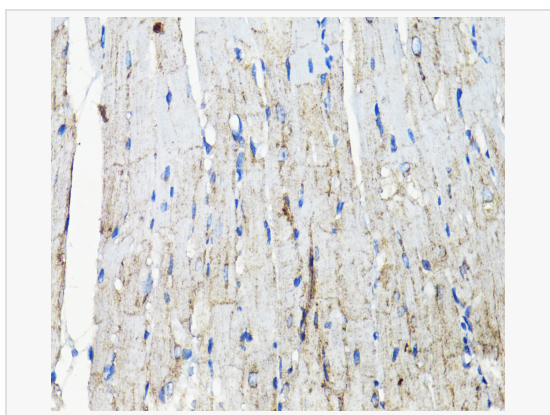
Synonyms	ERBB; ERRP; HER1; mENA; ERBB1; PIG61; NISBD2; EGFR.
Calculated MW	Calculated MW: 134 kDa; Observed MW: 175 kDa
Uniprot ID	P00533
Gene ID	1956
Background	The protein encoded by this gene is a transmembrane glycoprotein that is a member of the protein kinase superfamily. This protein is a receptor for members of the epidermal growth factor family. EGFR is a cell surface protein that binds to epidermal growth factor, thus inducing receptor dimerization and tyrosine autophosphorylation leading to cell proliferation. Mutations in this gene are associated with lung cancer. EGFR is a component of the cytokine storm which contributes to a severe form of Coronavirus Disease 2019 (COVID-19) resulting from infection with severe acute respiratory syndrome coronavirus-2 (SARS-CoV-2).



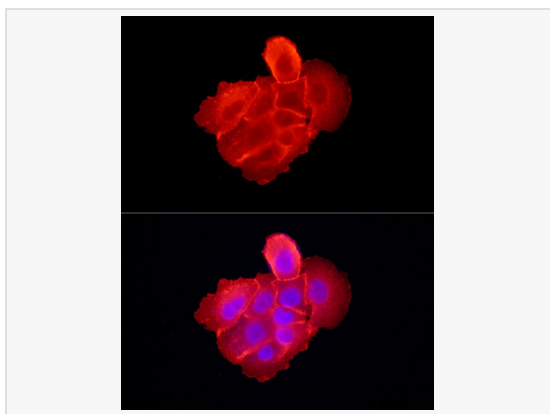
Immunohistochemistry analysis of paraffin-embedded Rat liver using EGFR Rabbit pAb (P100824) at dilution of 1:200 (40× lens). Microwave antigen retrieval performed with 0.01M PBS Buffer (pH 7.2) prior to IHC staining.



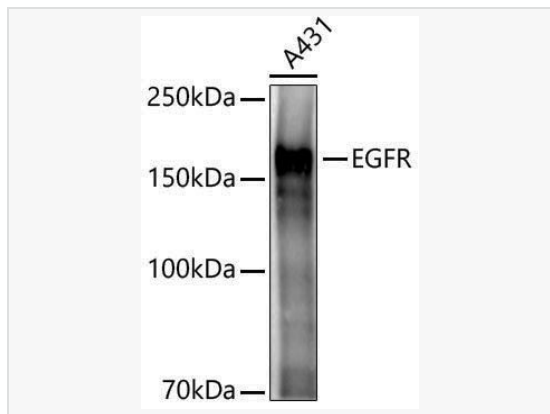
Immunohistochemistry analysis of paraffin-embedded Human placenta using EGFR Rabbit pAb (P100824) at dilution of 1:200 (40× lens). Microwave antigen retrieval performed with 0.01M PBS Buffer (pH 7.2) prior to IHC staining.



Immunohistochemistry analysis of paraffin-embedded Mouse heart using EGFR Rabbit pAb (P100824) at dilution of 1:200 (40× lens). Microwave antigen retrieval performed with 0.01M PBS Buffer (pH 7.2) prior to IHC staining.



Immunofluorescence analysis of A-431 cells using EGFR Rabbit pAb (P100824) at dilution of 1:300 (40× lens). Secondary antibody: Cy3-conjugated Goat anti-Rabbit IgG (H+L) at 1:500 dilution. Blue: DAPI for nuclear staining.



Western blot analysis of lysates from A431 cells, using EGFR Rabbit pAb (P100824) at 1:2,000 dilution.

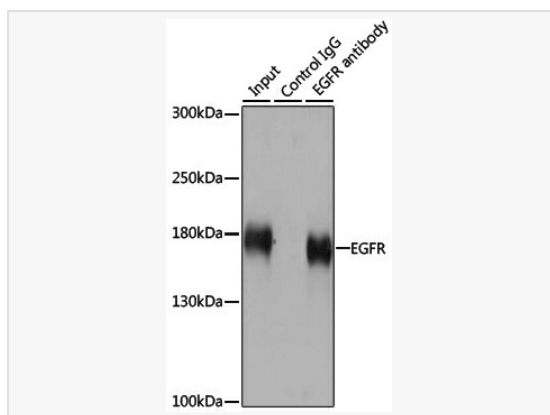
Secondary antibody: HRP-conjugated Goat anti-Rabbit IgG (H+L) (LF102) at 1:10,000 dilution.

Lysates/proteins: 25 μ g per lane.

Blocking buffer: 3% nonfat dry milk in TBST.

Detection: ECL Kit.

Exposure time: 3s.



Immunoprecipitation analysis of 200 μ g extracts of HeLa cells using 3 μ g EGFR antibody (P100824). Western blot was performed from the immunoprecipitate using EGFR antibody (P100824) at a dilution of 1:1000.