

# Anti-STAT3 Rabbit pAb

Purified Rabbit Polyclonal Antibody

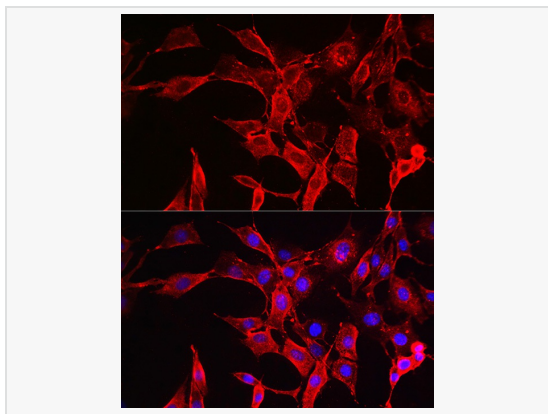
Catalog # P100722

## Product Information

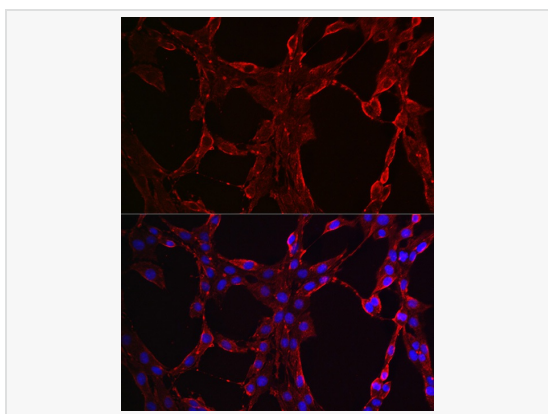
Application	WB, IF (Cell)/ICC, ELISA
Reactivity	Human, Mouse, Rat
Dilution	WB 1:500~1:2,000; IF 1:50~1:200
Host	Rabbit
Clonality	Polyclonal
Isotype	IgG
Label	Unconjugated
Immunogen	A synthetic peptide corresponding to a sequence within amino acids 600-700 of human STAT3 (NP_003141.2).
Format	Affinity purified polyclonal antibody supplied in PBS with 0.02% sodium azide and 50% glycerol, pH 7.3.
Storage	Shipped on wet ice. Store at -20°C. Stable for 24 months from date of receipt. Aliquoting is unnecessary for -20°C storage.
Precautions	Anti-STAT3 Rabbit pAb is for research use only and not for use in diagnostic or therapeutic procedures.

## Protein Information

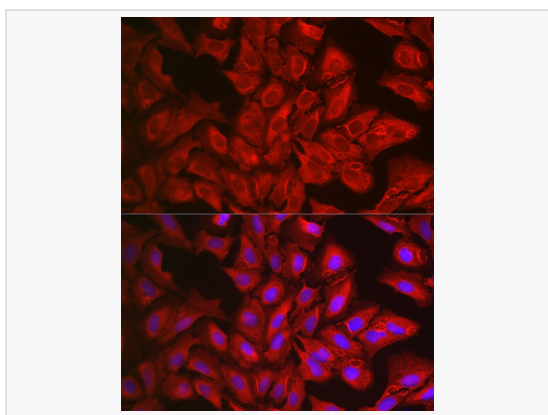
Synonyms	APRF; HIES; ADMIO; ADMIO1; STAT3.
Calculated MW	Calculated MW: 88 kDa; Observed MW: 79 kDa/86 kDa
Uniprot ID	P40763
Gene ID	6774
Background	The protein encoded by this gene is a member of the STAT protein family. In response to cytokines and growth factors, STAT family members are phosphorylated by the receptor associated kinases, and then form homo- or heterodimers that translocate to the cell nucleus where they act as transcription activators. This protein is activated through phosphorylation in response to various cytokines and growth factors including IFNs, EGF, IL5, IL6, HGF, LIF and BMP2. This protein mediates the expression of a variety of genes in response to cell stimuli, and thus plays a key role in many cellular processes such as cell growth and apoptosis. The small GTPase Rac1 has been shown to bind and regulate the activity of this protein. PIAS3 protein is a specific inhibitor of this protein. This gene also plays a role in regulating host response to viral and bacterial infections. Mutations in this gene are associated with infantile-onset multisystem autoimmune disease and hyper-immunoglobulin E syndrome.



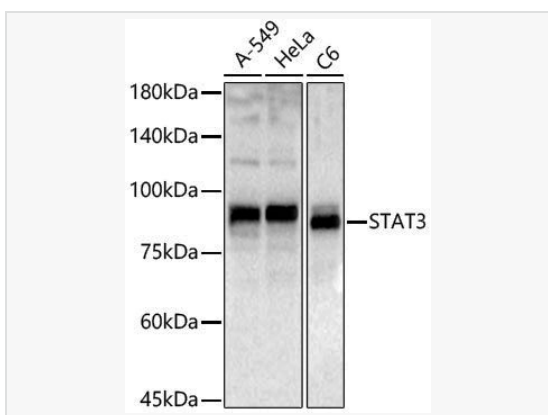
Immunofluorescence analysis of NIH/3T3 cells using STAT3 Rabbit pAb (P100722) at dilution of 1:100 (40× lens). Secondary antibody: Cy3-conjugated Goat anti-Rabbit IgG (H+L) at 1:500 dilution. Blue: DAPI for nuclear staining.



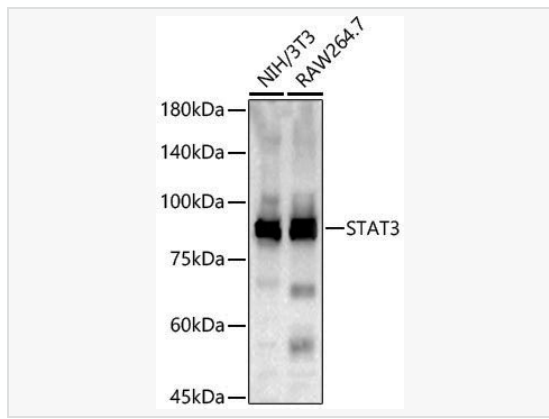
Immunofluorescence analysis of PC-12 cells using STAT3 Rabbit pAb (P100722) at dilution of 1:100 (40× lens). Secondary antibody: Cy3-conjugated Goat anti-Rabbit IgG (H+L) at 1:500 dilution. Blue: DAPI for nuclear staining.



Immunofluorescence analysis of U2OS cells using STAT3 Rabbit pAb (P100722) at dilution of 1:100 (40× lens). Secondary antibody: Cy3-conjugated Goat anti-Rabbit IgG (H+L) at 1:500 dilution. Blue: DAPI for nuclear staining.



Western blot analysis of various lysates, using STAT3 Rabbit pAb (P100722) at 1:2,000 dilution.  
Secondary antibody: HRP-conjugated Goat anti-Rabbit IgG (H+L) (LF102) at 1:10,000 dilution.  
Lysates/proteins: 25µg per lane.  
Blocking buffer: 3% nonfat dry milk in TBST.  
Detection: ECL Kit.  
Exposure time: 1s.



Western blot analysis of various lysates, using STAT3 Rabbit pAb (P100722) at 1:2,000 dilution.

Secondary antibody: HRP-conjugated Goat anti-Rabbit IgG (H+L) (LF102) at 1:10,000 dilution.

Lysates/proteins: 25 $\mu$ g per lane.

Blocking buffer: 3% nonfat dry milk in TBST.

Detection: ECL Kit.

Exposure time: 30s.