

Anti-LRRK2 Rabbit pAb

Purified Rabbit Polyclonal Antibody

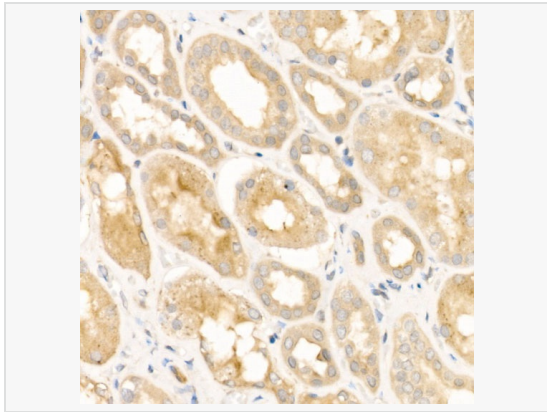
Catalog # P100180

Product Information

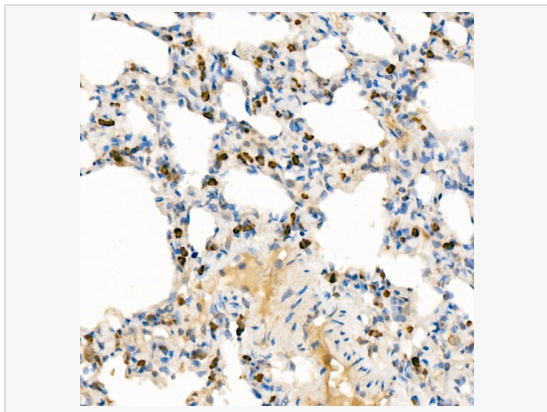
| | |
|-------------|---|
| Application | WB, IHC-P/IF (Tissue-P), ELISA |
| Reactivity | Human, Mouse, Rat |
| Dilution | WB 1:500~1:1,000; IHC-P 1:50~1:200 |
| Host | Rabbit |
| Clonality | Polyclonal |
| Isotype | IgG |
| Label | Unconjugated |
| Immunogen | Recombinant fusion protein containing a sequence corresponding to amino acids 750-910 of human LRRK2 (NP_940980.3). |
| Format | Affinity purified polyclonal antibody supplied in PBS with 0.02% sodium azide and 50% glycerol, pH 7.3. |
| Storage | Shipped on wet ice. Store at -20°C. Stable for 24 months from date of receipt. Aliquoting is unnecessary for -20°C storage. |
| Precautions | Anti-LRRK2 Rabbit pAb is for research use only and not for use in diagnostic or therapeutic procedures. |

Protein Information

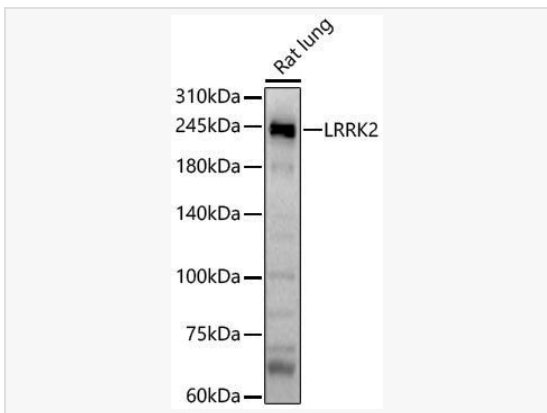
| | |
|---------------|--|
| Synonyms | PARK8; RIPK7; ROCO2; AURAI7; DARDARIN; LRRK2. |
| Calculated MW | Calculated MW: 286 kDa; Observed MW: 290 kDa |
| Uniprot ID | Q5S007 |
| Gene ID | 120892 |
| Background | This gene is a member of the leucine-rich repeat kinase family and encodes a protein with an ankryin repeat region, a leucine-rich repeat (LRR) domain, a kinase domain, a DFG-like motif, a RAS domain, a GTPase domain, a MLK-like domain, and a WD40 domain. The protein is present largely in the cytoplasm but also associates with the mitochondrial outer membrane. Mutations in this gene have been associated with Parkinson disease-8. |



Immunohistochemistry analysis of paraffin-embedded Human kidney using LRRK2 Rabbit pAb (P100180) at dilution of 1:20 (40× lens). High pressure antigen retrieval performed with 0.01M Citrate Bufferr (pH 6.0) prior to IHC staining.



Immunohistochemistry analysis of paraffin-embedded Rat lung using LRRK2 Rabbit pAb (P100180) at dilution of 1:20 (40× lens). High pressure antigen retrieval performed with 0.01M Citrate Bufferr (pH 6.0) prior to IHC staining.



Western blot analysis of lysates from Rat lung, using LRRK2 Rabbit pAb (P100180) at 1:900 dilution.

Secondary antibody: HRP-conjugated Goat anti-Rabbit IgG (H+L) (LF102) at 1:10,000 dilution.

Lysates/proteins: 25µg per lane.

Blocking buffer: 3% nonfat dry milk in TBST.

Detection: ECL Kit.

Exposure time: 60s.