

Anti-GSK3 alpha Rabbit pAb

Purified Rabbit Polyclonal Antibody

Catalog # P100116

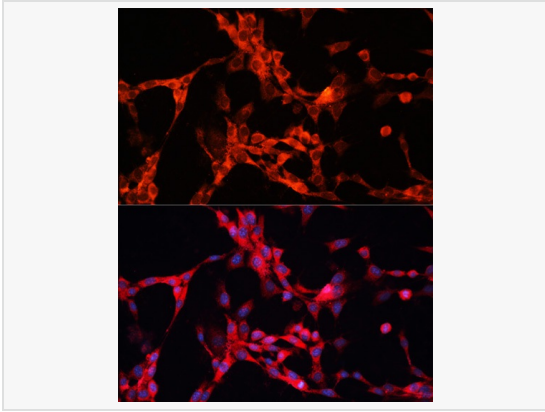
Product Information

Application	WB, IF (Cell)/ICC, ELISA
Reactivity	Human, Mouse
Dilution	WB 1:500~1:1,000; IF 1:20~1:100
Host	Rabbit
Clonality	Polyclonal
Isotype	IgG
Label	Unconjugated
Immunogen	Recombinant fusion protein containing a sequence corresponding to amino acids 409-483 of human GSK3 α (NP_063937.2).
Format	Affinity purified polyclonal antibody supplied in PBS with 0.02% sodium azide and 50% glycerol, pH 7.3.
Storage	Shipped on wet ice. Store at -20°C. Stable for 24 months from date of receipt. Aliquoting is unnecessary for -20°C storage.
Precautions	Anti-GSK3 alpha Rabbit pAb is for research use only and not for use in diagnostic or therapeutic procedures.

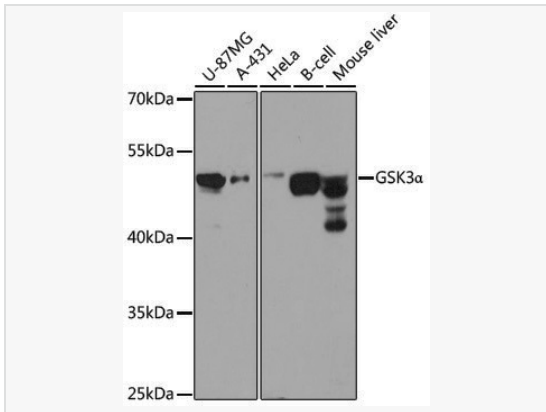
Protein Information

Synonyms	GSK3A; glycogen synthase kinase-3 alpha; 3 α .
Calculated MW	Calculated MW: 51 kDa; Observed MW: 51 kDa
Uniprot ID	P49840
Gene ID	2931
Background	This gene encodes a multifunctional Ser/Thr protein kinase that is implicated in the control of several regulatory proteins including glycogen synthase, and transcription factors, such as JUN. It also plays a role in the WNT and PI3K signaling pathways, as well as regulates the production of beta-amyloid peptides associated with Alzheimer's disease.

Validation Images



Immunofluorescence analysis of NIH/3T3 cells using GSK3 α Rabbit pAb (P100116) at dilution of 1:100. Secondary antibody: Cy3-conjugated Goat anti-Rabbit IgG (H+L) at 1:500 dilution. Blue: DAPI for nuclear staining.



Western blot analysis of various lysates using GSK3 α Rabbit pAb (P100116) at 1:1,000 dilution.

Secondary antibody: HRP-conjugated Goat anti-Rabbit IgG (H+L) (LF102) at 1:10,000 dilution.

Lysates/proteins: 25 μ g per lane.

Blocking buffer: 3% nonfat dry milk in TBST.

Detection: ECL Kit.

Exposure time: 10s.