

[KD Validated] Anti-ERK1 Rabbit pAb

Purified Rabbit Polyclonal Antibody

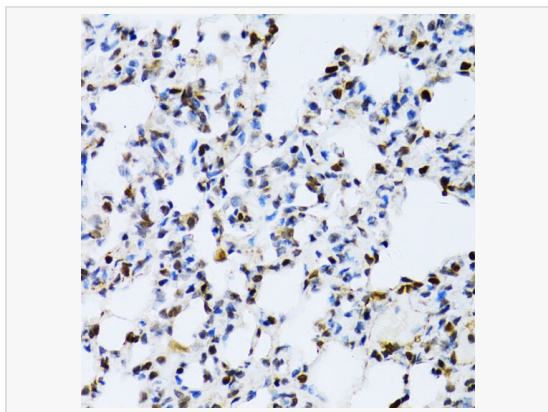
Catalog # P100029

Product Information

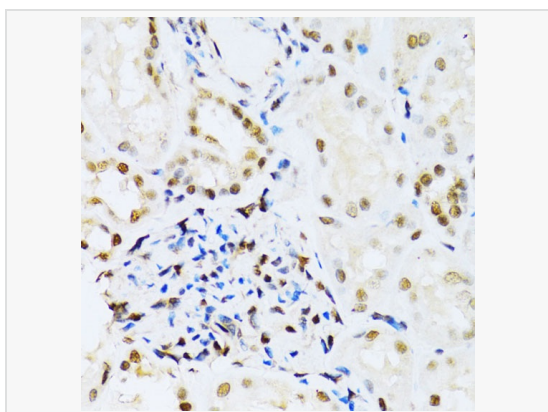
Application	WB, IHC-P/IF (Tissue-P), IF (Cell)/ICC, ELISA
Reactivity	Human, Mouse, Rat
Dilution	WB 1:500~1:2,000; IHC-P 1:50~1:200; IF 1:50~1:200
Host	Rabbit
Clonality	Polyclonal
Isotype	IgG
Label	Unconjugated
Immunogen	Recombinant fusion protein containing a sequence corresponding to amino acids 1-100 of human ERK1 (NP_002737.2).
Format	Affinity purified polyclonal antibody supplied in PBS with 0.02% sodium azide and 50% glycerol, pH 7.3.
Storage	Shipped on wet ice. Store at -20°C. Stable for 24 months from date of receipt. Aliquoting is unnecessary for -20°C storage.
Precautions	Anti-ERK1 Rabbit pAb is for research use only and not for use in diagnostic or therapeutic procedures.

Protein Information

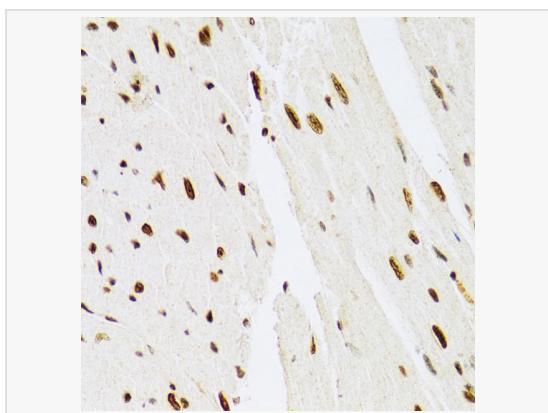
Synonyms	ERK1; ERT2; ERK-1; PRKM3; P44ERK1; P44MAPK; HS44KDAP; HUMKER1A; p44-ERK1; p44-MAPK.
Calculated MW	Calculated MW: 43 kDa; Observed MW: 40 kDa
Uniprot ID	P27361
Gene ID	5595
Background	The protein encoded by this gene is a member of the MAP kinase family. MAP kinases, also known as extracellular signal-regulated kinases (ERKs), act in a signaling cascade that regulates various cellular processes such as proliferation, differentiation, and cell cycle progression in response to a variety of extracellular signals. This kinase is activated by upstream kinases, resulting in its translocation to the nucleus where it phosphorylates nuclear targets. Alternatively spliced transcript variants encoding different protein isoforms have been described.



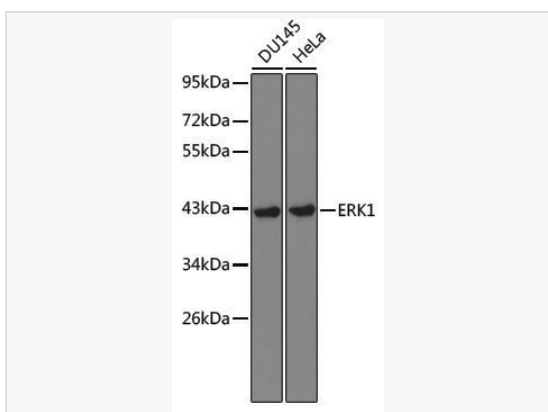
Immunohistochemistry analysis of paraffin-embedded Rat lung using [KD Validated] ERK1 Rabbit pAb (P100029) at dilution of 1:100 (40× lens). Microwave antigen retrieval performed with 0.01M PBS Buffer (pH 7.2) prior to IHC staining.



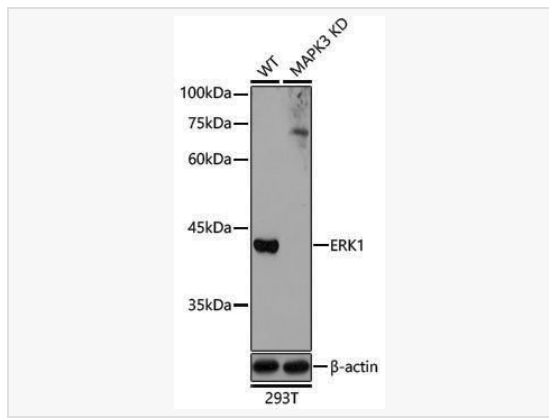
Immunohistochemistry analysis of paraffin-embedded Human kidney using [KD Validated] ERK1 Rabbit pAb (P100029) at dilution of 1:100 (40× lens). Microwave antigen retrieval performed with 0.01M PBS Buffer (pH 7.2) prior to IHC staining.



Immunohistochemistry analysis of paraffin-embedded Mouse heart using [KD Validated] ERK1 Rabbit pAb (P100029) at dilution of 1:100 (40× lens). Microwave antigen retrieval performed with 0.01M PBS Buffer (pH 7.2) prior to IHC staining.



Western blot analysis of various lysates using [KD Validated] ERK1 Rabbit pAb (P100029) at 1:1,000 dilution.
Secondary antibody: HRP-conjugated Goat anti-Rabbit IgG (H+L) (LF102) at 1:10,000 dilution.
Lysates/proteins: 25µg per lane.
Blocking buffer: 3% nonfat dry milk in TBST.



Western blot analysis of lysates from wild type (WT) and ERK1 knockdown (KD) 293T cells, using [KD Validated] ERK1 Rabbit pAb (P100029) at 1:1,000 dilution. Secondary antibody: HRP-conjugated Goat anti-Rabbit IgG (H+L) (LF102) at 1:10,000 dilution.
Lysates/proteins: 25 μ g per lane.
Blocking buffer: 3% nonfat dry milk in TBST.
Detection: ECL Kit.
Exposure time: 10s.