

Anti-MYL12B Rabbit mAb

Purified Recombinant Rabbit Monoclonal Antibody

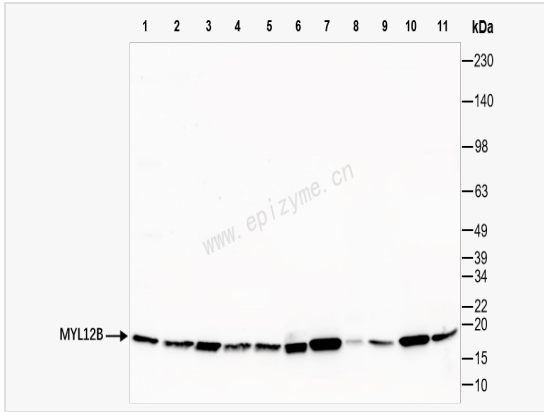
Catalog # R015742

Product Information

Application	WB, IHC-P/IF (Tissue-P), IF (Cell)/ICC, ELISA
Reactivity	Human, Mouse, Rat
Dilution	WB 1:1,000~1:2,000; IHC-P 1:100~1:200; IF 1:100~1:200
Host	Rabbit
Clonality	Monoclonal
Clone No.	42L66M52
Isotype	IgG
Label	Unconjugated
Immunogen	A synthesized peptide derived from human MYL12B
Format	Affinity purified monoclonal antibody supplied in PBS with 0.02% sodium azide and 50% glycerol, pH 7.3.
Storage	Shipped on wet ice. Store at -20°C. Stable for 24 months from date of receipt. Aliquoting is unnecessary for -20°C storage.
Precautions	Anti-MYL12B Rabbit mAb [42L66M52] is for research use only and not for use in diagnostic or therapeutic procedures.

Protein Information

Synonyms	ML12B_HUMAN; MLC 2A; MLC-2; MLC-2a; MLC-B; MLC20; MRLC2; MYL12B; MYLC2B; Myosin light chain 12B regulatory; Myosin regulatory light chain 12B; myosin regulatory light chain 2; Myosin regulatory light chain 2-B; myosin regulatory light chain 2-B, smooth muscle isoform; Myosin regulatory light chain 20 kDa; Myosin regulatory light chain MRLC2; myosin, light chain 12B, regulatory; OTTHUMP00000162244; OTTHUMP00000165806; OTTHUMP00000165807; OTTHUMP00000165808; SHUJUN-1; smooth muscle isoform.
Calculated MW	Calculated MW: 20 kDa; Observed MW: 18 kDa
Uniprot ID	O14950
Gene ID	103910, 10627
Background	The activity of nonmuscle myosin II (see MYH9; MIM 160775) is regulated by phosphorylation of a regulatory light chain, such as MRLC2. This phosphorylation results in higher MgATPase activity and the assembly of myosin II filaments (Iwasaki et al., 2001 [PubMed 11942626]).[supplied by OMIM, Mar 2008]
Tissue Location	Ubiquitously expressed in various hematopoietic cells.



Western Blot - Anti-MYL12B Rabbit mAb [42L66M52]

All lanes: R015742 at 1:1,000 dilution

Lane 1: HeLa (Human cervix adenocarcinoma epithelial cell) whole cell lysates

Lane 2: HepG2 (Human hepatocarcinoma epithelial cell) whole cell lysates

Lane 3: HCT116 (Human colorectal carcinoma epithelial cell) whole cell lysates

Lane 4: 293T (Human embryonic kidney cell) whole cell lysates

Lane 5: K562 (Human chronic myeloid leukemia cell) whole cell lysates

Lane 6: SH-SY5Y (Human neuroblastoma epithelial cell) whole cell lysates

Lane 7: C2C12 (Mouse myoblasts epithelial cell) whole cell lysates

Lane 8: Mouse heart whole tissue lysates

Lane 9: Mouse brain whole tissue lysates

Lane 10: PC-12 (Rat adrenal pheochromocytoma epithelial cell) whole cell lysates

Lane 11: Rat liver whole tissue lysates

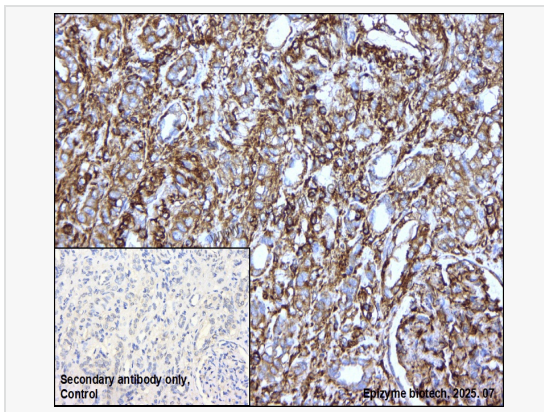
Lysates/proteins at 10 µg per lane.

Secondary antibody: Goat Anti-Rabbit IgG (H+L), HRP Conjugated (Cat. No. LF102) at 1:5,000 dilution

Predicted band size: 20 kDa

Observed band size: 18 kDa

Developed using the ECL technique (Cat. No. SQ201).



Immunohistochemistry - Anti-MYL12B Rabbit mAb [42L66M52]

Sample: Paraformaldehyde-fixed, paraffin embedded human renal carcinoma tissue

Heat mediated antigen retrieval with Tris-EDTA buffer (pH 9.0) for 30 mins.

Primary antibody: R015742 at 1:200 dilution

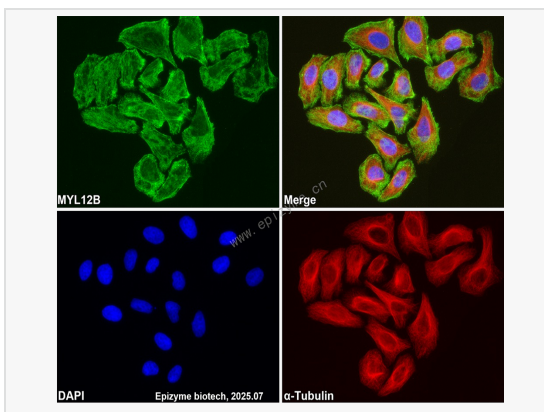
Secondary antibody: Goat Anti-Rabbit IgG (H+L), HRP conjugated at 1:1,000 dilution

DAB was used as the chromogen.

Counter stained with hematoxylin.

Positive/negative staining were presented.

Only the secondary antibody was used as the negative control.



Immunofluorescence - Anti-MYL12B Rabbit mAb [42L66M52]

Sample: HeLa cells

The cells were fixed with 4% paraformaldehyde (10 min), permeabilized with 0.5% Triton X-100 for 10 minutes and then blocked with 5% BSA in 0.1% PBS-Tween for 0.5 hours.

Primary antibodies: R015742 at 1:100 dilution and α-tubulin Mouse Monoclonal Antibody (Cat. No. LF209) at 1:100 dilution

Secondary antibodies: Goat anti-Rabbit (488) at 1:1,000 dilution (shown in green) and Goat anti-Mouse (555) at 1:1,000 dilution (shown in red)

Nuclei were stained with DAPI (shown in blue).