

## Anti-ABI2 Rabbit mAb

Purified Recombinant Rabbit Monoclonal Antibody

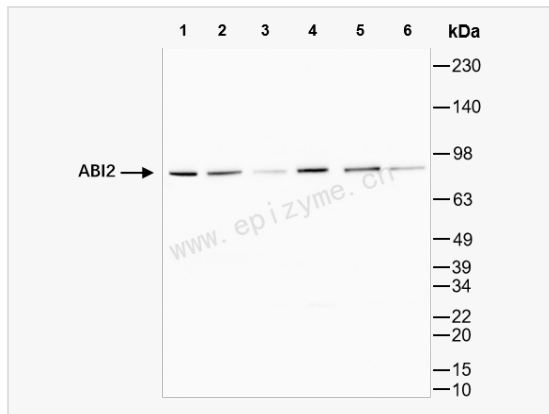
Catalog # R015717

### Product Information

Application	WB, IHC-P/IF (Tissue-P), IF (Cell)/ICC, ELISA
Reactivity	Human
Dilution	WB 1:1,000~1:2,000; IHC-P 1:100~1:200; IF 1:100~1:200
Host	Rabbit
Clonality	Monoclonal
Clone No.	94D57143
Isotype	IgG
Label	Unconjugated
Immunogen	A synthesized peptide derived from human ABI2
Format	Affinity purified monoclonal antibody supplied in PBS with 0.02% sodium azide and 50% glycerol, pH 7.3.
Storage	Shipped on wet ice. Store at -20°C. Stable for 24 months from date of receipt. Aliquoting is unnecessary for -20°C storage.
Precautions	Anti-ABI2 Rabbit mAb [94D57143] is for research use only and not for use in diagnostic or therapeutic procedures.

### Protein Information

Synonyms	Abelson interactor 2; ABI 2; Abi-2; ABI2; ABI2_HUMAN; ABI2B; Abl binding protein 3; Abl interacting protein 1 (SH3 containing protein); Abl interactor 2; Abl interactor protein 2b; Abl-binding protein 3; AblBP3; AIP 1; Arg binding protein 1; Arg protein tyrosine kinase binding protein; Arg-binding protein 1; ArgBP1; ARGBPIA; ArgBPIB; OTTHUMP00000163783; OTTHUMP00000163784; OTTHUMP00000206182; OTTHUMP00000206183; OTTHUMP00000206184; OTTHUMP00000206185; SSH3BP2.
Calculated MW	Calculated MW: 56 kDa; Observed MW: 75 kDa
Uniprot ID	Q9NYB9
Gene ID	10152
Background	Enables several functions, including SH3 domain binding activity; proline-rich region binding activity; and ubiquitin protein ligase binding activity. Contributes to small GTPase binding activity. Involved in several processes, including Rac protein signal transduction; positive regulation of cellular component organization; and zonula adherens assembly. Acts upstream of or within peptidyl-tyrosine phosphorylation. Located in several cellular components, including actin filament; filopodium tip; and lamellipodium. Part of SCAR complex. Is active in adherens junction. [provided by Alliance of Genome Resources, Jul 2025]
Cellular Location	Cytoplasm and Cell projection > lamellipodium. Cell projection > filopodium. Cytoplasm > cytoskeleton. Isoform 1 but not isoform 3 is localized to protruding lamellipodia and filopodia tips.



Western Blot - Anti-ABI2 Rabbit mAb [94D57143]

All lanes: R015717 at 1:1,000 dilution

Lane 1: HeLa (Human cervix adenocarcinoma epithelial cell) whole cell lysates

Lane 2: HepG2 (Human hepatocarcinoma epithelial cell) whole cell lysates

Lane 3: HCT116 (Human colorectal carcinoma epithelial cell) whole cell lysates

Lane 4: 293T (Human embryonic kidney cell) whole cell lysates

Lane 5: K562 (Human chronic myeloid leukemia cell) whole cell lysates

Lane 6: U87 (Human malignant glioblastoma epithelial cells) whole cell lysates

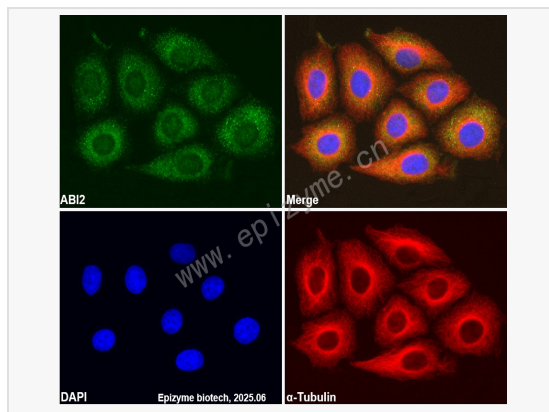
Lysates/proteins at 10 µg per lane.

Secondary antibody: Goat Anti-Rabbit IgG (H+L), HRP Conjugated (Cat. No. LF102) at 1:5,000 dilution

Predicted band size: 56 kDa

Observed band size: 75 kDa

Developed using the ECL technique (Cat. No. SQ201).



Immunofluorescence - Anti-ABI2 Rabbit mAb [94D57143]

Sample: HeLa cells

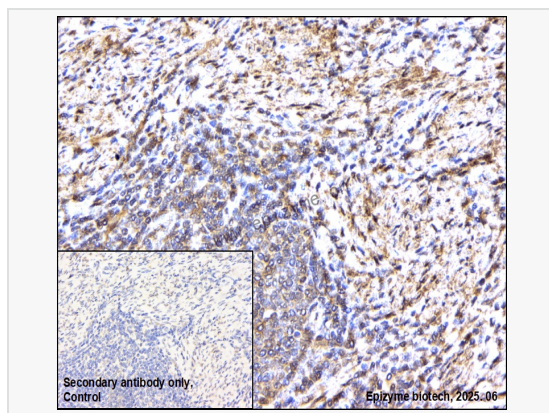
The cells were fixed with 4% paraformaldehyde (10 min), permeabilized with 0.5% Triton X-100 for 10 minutes and then blocked with 5% BSA in 0.1% PBS-Tween for 0.5 hours.

Primary antibodies: R015717 at 1:100 dilution and  $\alpha$ -tubulin Mouse Monoclonal Antibody (Cat. No. LF209) at 1:100 dilution

Secondary antibodies: Goat anti-Rabbit (488) at 1:1,000 dilution (shown in green) and

Goat anti-Mouse (555) at 1:1,000 dilution (shown in red)

Nuclei were stained with DAPI (shown in blue).



Immunohistochemistry - Anti-ABI2 Rabbit mAb [94D57143]

Sample: Paraformaldehyde-fixed, paraffin embedded human endometrial carcinoma tissue

Heat mediated antigen retrieval with Tris-EDTA buffer (pH 9.0) for 30 mins.

Primary antibody: R015717 at 1:200 dilution

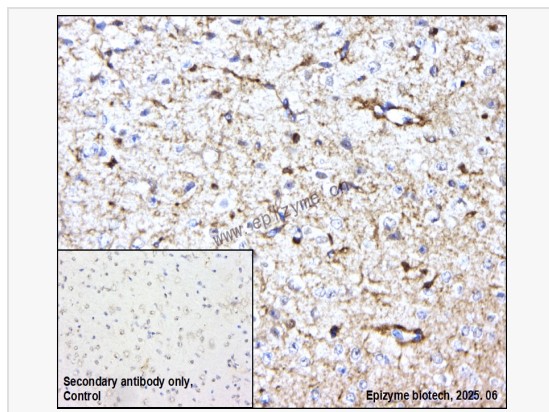
Secondary antibody: Goat Anti-Rabbit IgG (H+L), HRP conjugated at 1:1,000 dilution

DAB was used as the chromogen.

Counter stained with hematoxylin.

Positive/negative staining were presented.

Only the secondary antibody was used as the negative control.



Immunohistochemistry - Anti-ABI2 Rabbit mAb [94D57143]

Sample: Paraformaldehyde-fixed, paraffin embedded mouse brain tissue

Heat mediated antigen retrieval with Tris-EDTA buffer (pH 9.0) for 30 mins.

Primary antibody: R015717 at 1:200 dilution

Secondary antibody: Goat Anti-Rabbit IgG (H+L), HRP conjugated at 1:1,000 dilution

DAB was used as the chromogen.

Counter stained with hematoxylin.

Positive/negative staining were presented.

Only the secondary antibody was used as the negative control.